

iMac (17-inch Flat Panel)

Updated 18 March 2003





Take Apart
iMac (17-inch Flat Panel)



Tools

The following tools are recommended for the take apart procedures.

- service repair kit (076-0900) includes:
 - the service stand (076-0898)
 - diagnostic cables (076-0897)
- thermal paste (922-4757)
- torque driver (076-0899)
- 1.5 mm hex driver (for LCD bezel screws)
- phillips #0 screwdriver)
- torx screwdriver set (6, 8, 10, 15, 25)
- plastic flatblade screwdriver or stylus
- needlenose pliers
- ESD wriststrap and mat

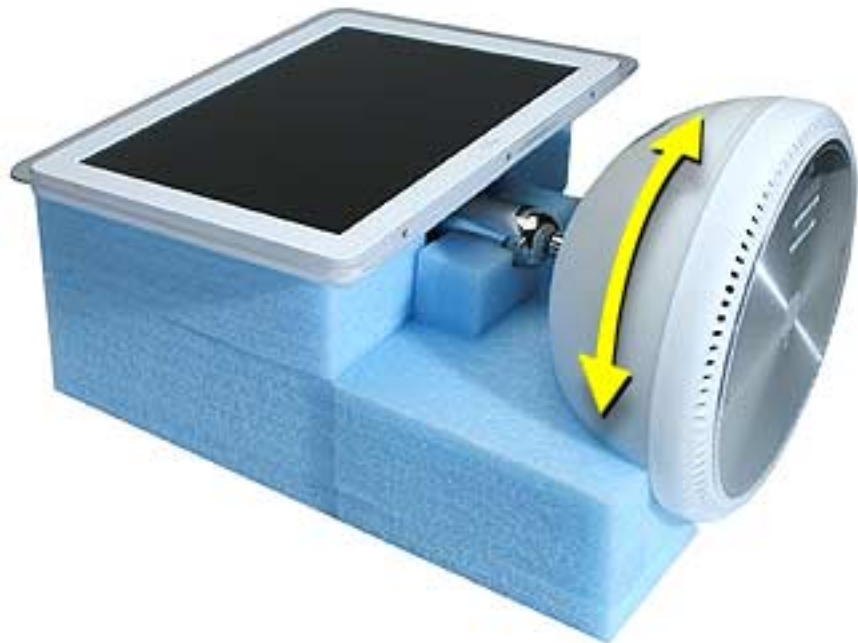
Service Stand



1. Support the computer by neck and the base (A). Gently position the computer in the service stand with the flat panel facing up (B).



2. **Note:** The base of the computer can be rotated when servicing internal parts.





User Access Plate

Tools

This procedure requires the following tools:

- Phillips #0 screwdriver

Part Location



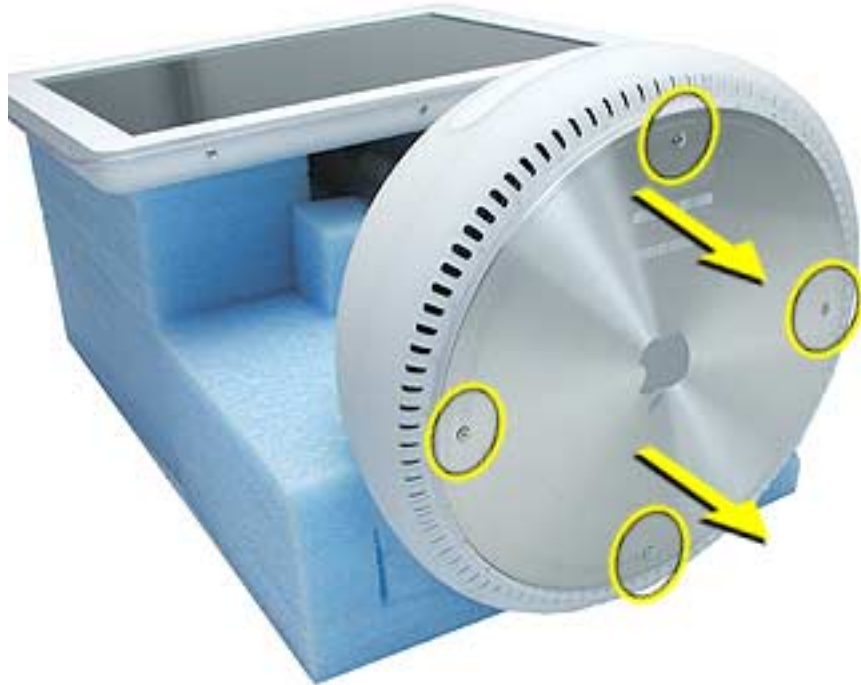
Preliminary Steps

Before you begin, do the following:

- Position the computer in the service stand.

Procedure

1. Loosen the four captive screws on the access panel.
2. Remove the panel by grabbing onto two captive screws and lift the panel off the base.





AirPort Card

Tools

This procedure requires no tools.

Part Location



Preliminary Steps

Before you begin, do the following:

- Position the computer in the service stand.
- Remove the user access plate.

Procedure

1. Unplug all cables from the computer except the power cord.
2. **Important:** To avoid electrostatic discharge, always ground yourself by touching metal before you touch any parts or install any components inside the computer. To avoid static electricity building back up in your body, do not walk around the room until you have completed the installation and closed the computer.
3. Touch a metal surface inside the computer to ground yourself.



4. Unplug the power cord.
5. Disconnect the AirPort antenna and pull the plastic tab to remove the card from the slot.





Memory, SO-DIMM (user-installable)

Tools

No tools are required for this procedure.

Part Location



Note: The user-installable memory slot is identified as Slot J22 by Apple Hardware Test and Apple System Profiler.

Preliminary Steps

Before you begin, do the following:

- Position the computer in the service stand.
- Remove the user access plate.

Note: There are two RAM expansion slots on the computer. One slot (top of the logic board) accepts the factory-installed standard PC-133 168-pin DIMM. The other slot (bottom of logic board) accepts a standard PC-133 144-pin SO-DIMM and is accessible on the bottom of the computer. Only the SO-DIMM slot is accessible by the user.

Procedure

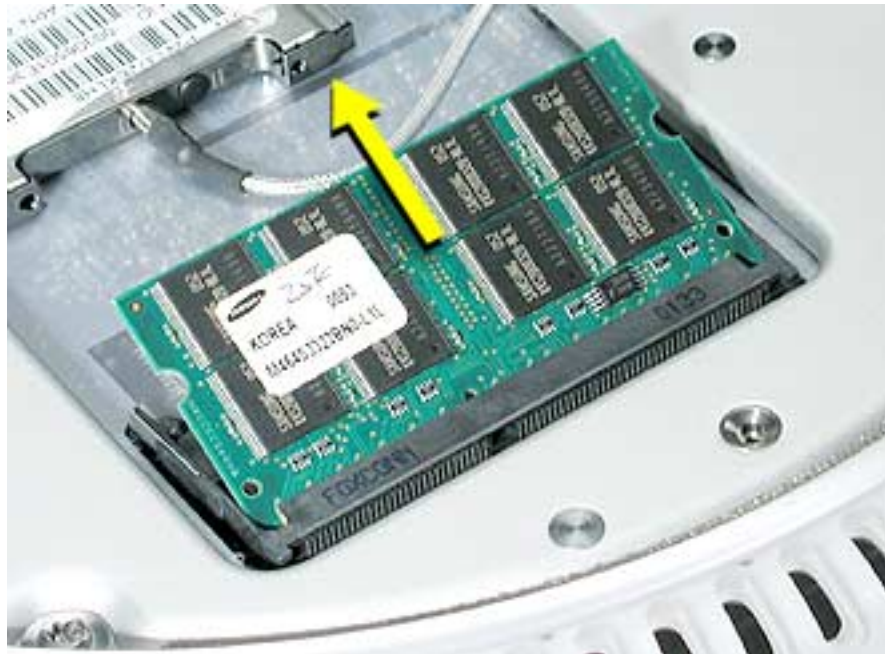
1. Unplug all cables from the computer except the power cord.
2. **Important:** To avoid electrostatic discharge, always ground yourself by touching metal before you touch any parts or install any components inside the computer. To avoid static electricity building back up in your body, do not walk around the room until you have completed the installation and closed the computer.
3. Touch a metal surface inside the computer to ground yourself.



4. Unplug the power cord.
5. Push the tabs outward to release the memory.



6. Remove the memory from the slot.





Bottom Housing

Tools

This procedure requires the following tools:

- Torx-15 screwdriver

Part Location



Preliminary Steps

Before you begin, do the following:

- Position the computer in the service stand.
- Remove the user access plate.

Procedure

1. Rotate the base so the optical drive door is on the right. Remove the four torx screws.

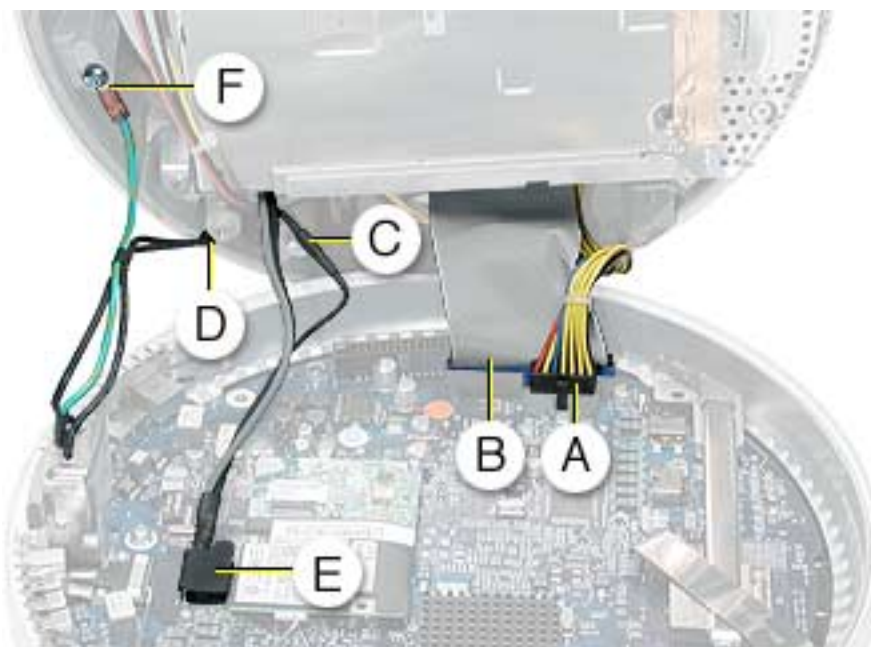


Replacement Note: These torx screws must be tightened to at least 17 in.-lbs. If you do not have a torque driver, you will have to make sure these screws are tightened by hand **FIRMLY, BUT NOT FORCIBLY**. Or, purchase the service tool (076-0899) in order to ensure the thermal pipe is firmly mated with the top base. If the bottom housing is not securely attached to the base in this fashion, the CPU may overheat and become damaged. For more information, refer to “Thermal Paste Application” in this chapter. Rotate the base so that the optical drive door is on the right.

-
2. Gently open the bottom housing in the direction of the arrow. **Note:** Cables are still attached to the logic board.



3. Disconnect the following:
 - A** Power supply connector
 - B** Hard drive/optical drive data cable
 - C** AC line filter connector
 - D** AirPort antenna connector
 - E** Plastic cable retainer and video cable
 - F** Grounding screw



4. Set the bottom housing aside.

Warning: Whenever the bottom housing is opened for service, you must do two things:

1. You must clean the original thermal film from all thermal interface mating surfaces, and reapply thermal paste to the mating surfaces on the thermal pipe.
2. You must tighten the four torx screws on the bottom housing to a minimum of 17 in.-lbs. Use a torque driver (service tool 076-0899) to ensure that the thermal pipe is firmly mated with the top base. If you do not have a torque driver, you must make sure the screws are tightened by hand **FIRMLY, BUT NOT FORCIBLY**.

Warning: Failure to follow these steps could cause the computer to overheat and damage internal components.

Refer to the topic “Thermal Paste Application” for detailed information.



Thermal Paste Application

Tools

This procedure requires the following tools:

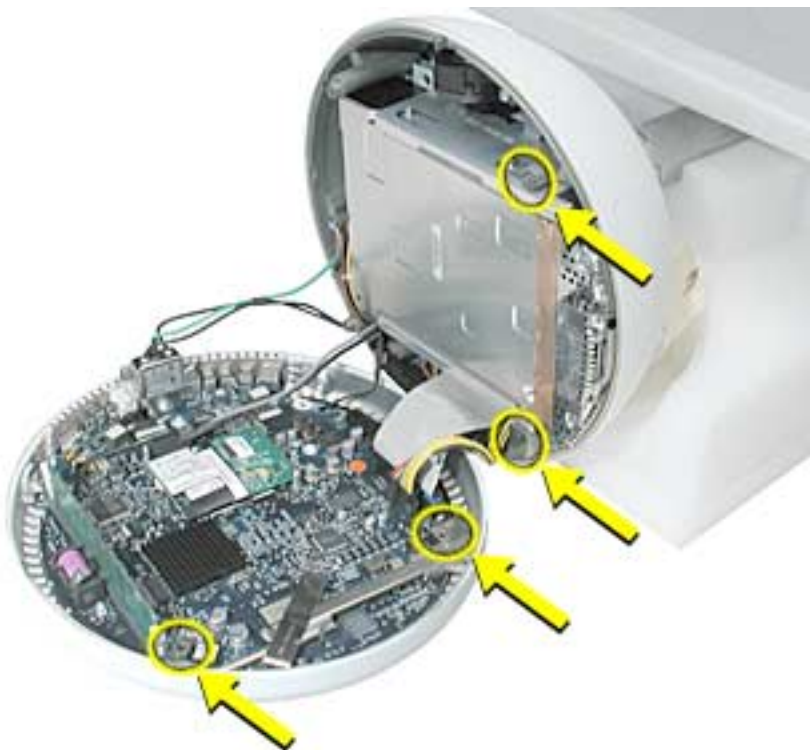
- Plastic stylus or plastic spatula to remove the old thermal paste
- Plastic stylus or plastic spatula to spread the thermal paste
- Thermal paste (922-4757)

Part Location

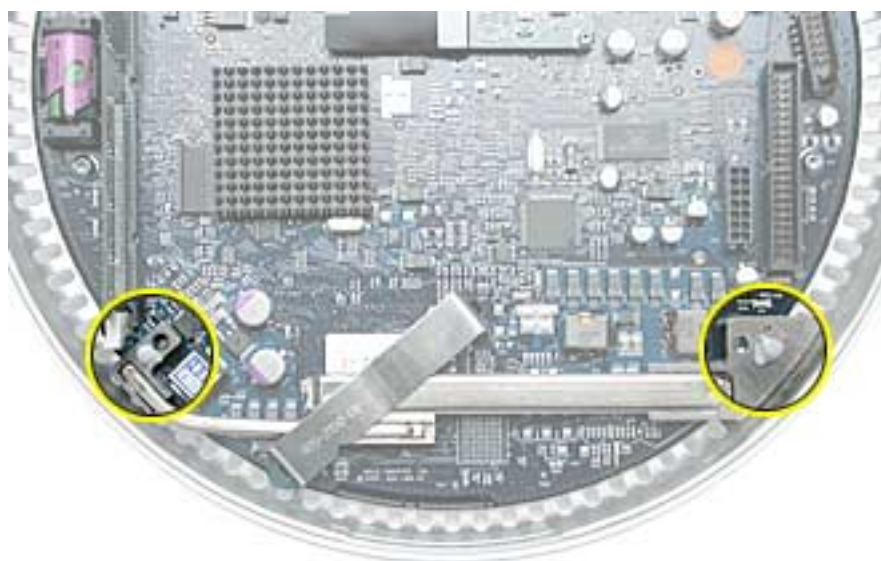


Procedure

1. Thoroughly clean the original thermal film from the mating surfaces (circled below) of the bottom housing and thermal pipe. Use a plastic stylus to scrape the surfaces clean. **Note:** Do not use an abrasive material or liquid cleaner.



2. Squeeze a thin film of thermal paste onto the mating surfaces of the thermal pipe.



-
3. Replace the bottom housing.

Warning: The bottom housing has four torx screws that must be tightened to at least 17 in.-lbs. Use a torque driver (service tool 076-0899) to ensure that the thermal pipe is firmly mated with the top base. If you do not have a torque driver, you must make sure the screws are tightened by hand **FIRMLY, BUT NOT FORCIBLY**.

Warning: Failure to apply the thermal paste as described in this procedure, and failure to tighten the torx screws as directed, could cause the computer to overheat and damage internal components.

Refer to the topic “Thermal Paste Application” for detailed information.



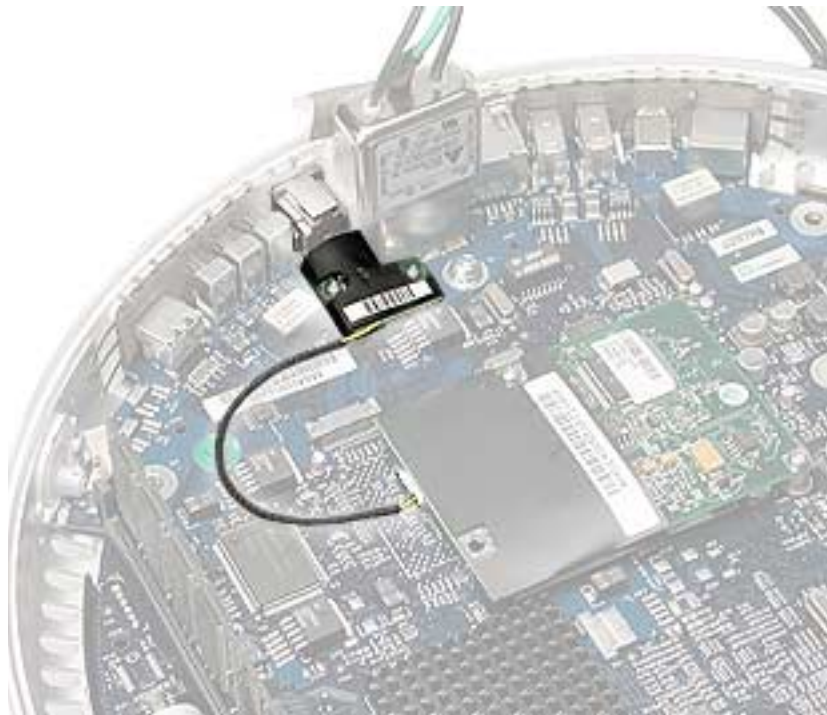
RJ-11 Modem Filter Board

Tools

This procedure requires the following tools:

- Torx-6 screwdriver

Part Location



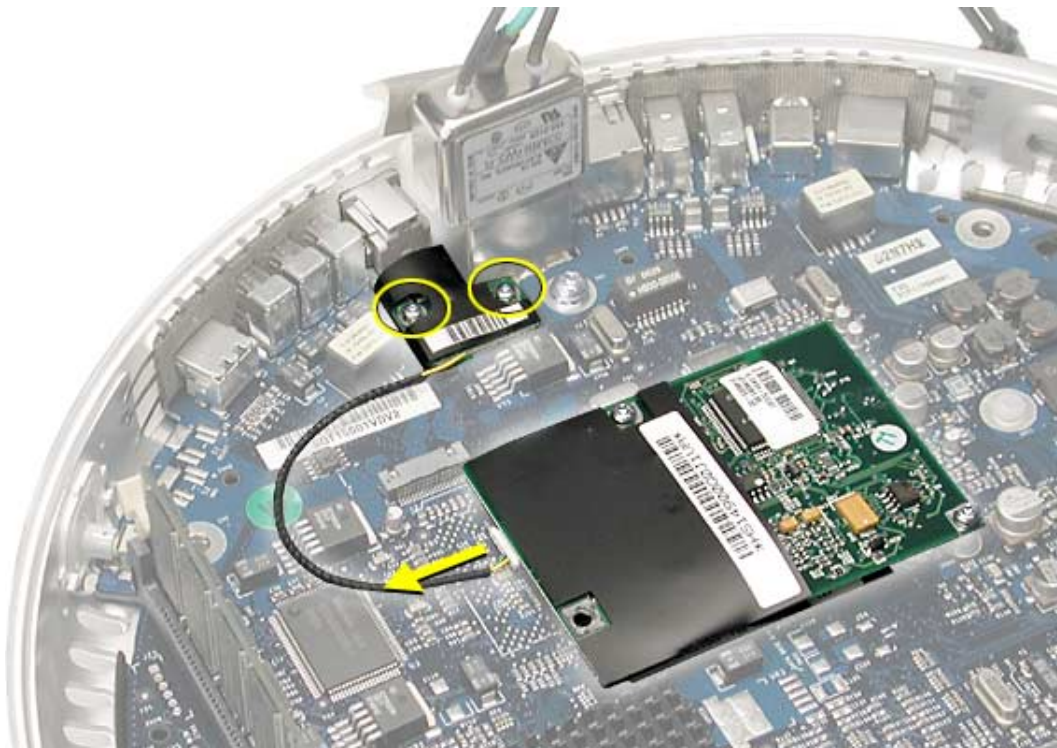
Preliminary Steps

Before you begin, do the following:

- Position the computer in the service stand.
- Remove the user access plate.
- Remove the bottom housing.

Procedure

1. Remove two screws and disconnect the cable from the modem.



2. Remove the RJ-11 board from the I/O port.

Warning: Whenever the bottom housing is opened for service, you must do two things:

1. You must clean the original thermal film from all thermal interface mating surfaces, and reapply thermal paste to the mating surfaces on the thermal pipe.
2. You must tighten the four torx screws on the bottom housing to a minimum of 17 in.-lbs. Use a torque driver (service tool 076-0899) to ensure that the thermal pipe is firmly mated with the top base. If you do not have a torque driver, you must make sure the screws are tightened by hand **FIRMLY, BUT NOT FORCIBLY**.

Warning: Failure to follow these steps could cause the computer to overheat and damage internal components.

Refer to the topic “Thermal Paste Application” for detailed information.



Modem

Tools

This procedure requires the following tools:

- Torx-8 screwdriver

Part Location



Preliminary Steps

Before you begin, do the following:

- Position the computer in the service stand.
- Remove the user access plate.
- Remove the bottom housing.

Procedure

1. Remove two screws and disconnect the cable.



2. Lift the modem from the connector on the logic board.

Warning: Whenever the bottom housing is opened for service, you must do two things:

1. You must clean the original thermal film from all thermal interface mating surfaces, and reapply thermal paste to the mating surfaces on the thermal pipe.

2. You must tighten the four torx screws on the bottom housing to a minimum of 17 in.-lbs. Use a torque driver (service tool 076-0899) to ensure that the thermal pipe is firmly mated with the top base. If you do not have a torque driver, you must make sure the screws are tightened by hand **FIRMLY, BUT NOT FORCIBLY**.

Warning: Failure to follow these steps could cause the computer to overheat and damage internal components.

Refer to the topic “Thermal Paste Application” for detailed information.



Memory (factory-installed)

Tools

This procedure requires the following tools:

- No tools are required

Part Location



Note: The factory-installed memory slot is identified as Slot J13 by Apple Hardware Test and Apple System Profiler.

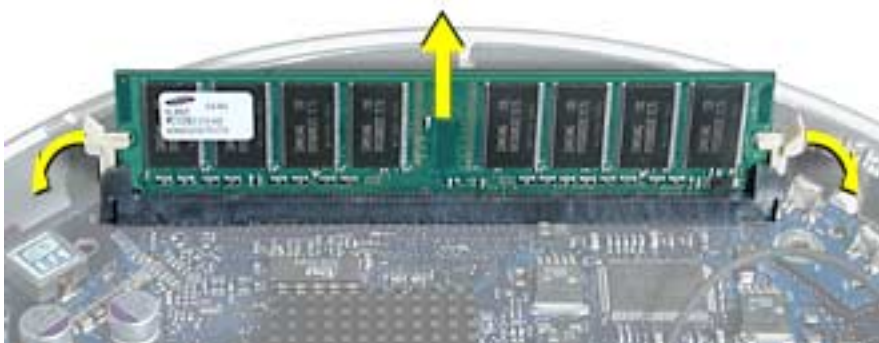
Preliminary Steps

Before you begin, do the following:

- Position the computer in the service stand.
- Remove the user access plate.
- Remove the bottom housing.

Procedure

1. Push down on the ejector tabs to release the memory module.
2. Pull the memory up and out of the slot.



Warning: Whenever the bottom housing is opened for service, you must do two things:

1. You must clean the original thermal film from all thermal interface mating surfaces, and reapply thermal paste to the mating surfaces on the thermal pipe.
2. You must tighten the four torx screws on the bottom housing to a minimum of 17 in.-lbs. Use a torque driver (service tool 076-0899) to ensure that the thermal pipe is firmly mated with the top base. If you do not have a torque driver, you must make sure the screws are tightened by hand **FIRMLY, BUT NOT FORCIBLY**.

Warning: Failure to follow these steps could cause the computer to overheat and damage internal components.

Refer to the topic “Thermal Paste Application” for detailed information.



Battery

Tools

This procedure requires the following tools:

- No tools are required

Part Location



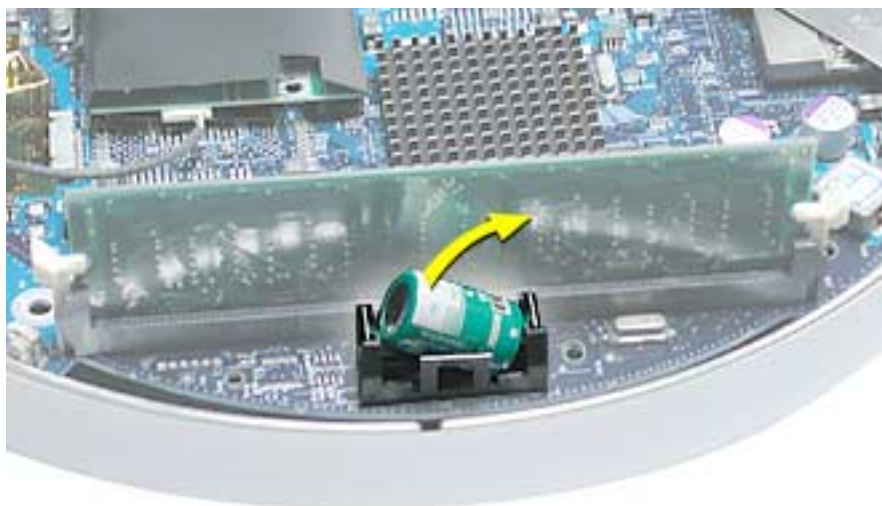
Preliminary Steps

Before you begin, do the following:

- Position the computer in the service stand.
- Remove the user access plate.
- Remove the bottom housing.

Procedure

1. Using a flatblade screwdriver, gently pry the battery from the battery holder.



Warning: Whenever the bottom housing is opened for service, you must do two things:

1. You must clean the original thermal film from all thermal interface mating surfaces, and reapply thermal paste to the mating surfaces on the thermal pipe.
2. You must tighten the four torx screws on the bottom housing to a minimum of 17 in.-lbs. Use a torque driver (service tool 076-0899) to ensure that the thermal pipe is firmly mated with the top base. If you do not have a torque driver, you must make sure the screws are tightened by hand **FIRMLY, BUT NOT FORCIBLY**.

Warning: Failure to follow these steps could cause the computer to overheat and damage internal components.

Refer to the topic “Thermal Paste Application” for detailed information.



Logic Board

Tools

This procedure requires the following tools:

- Phillips #2 screwdriver (for the plastic screw)
- Torx-15 screwdriver

Part Location

Note: The battery, RJ-11 board, AirPort card, modem, I/O port covers, and memory (on the top and the bottom of the logic board) need to be removed from the logic board before returning the board to Apple for service.



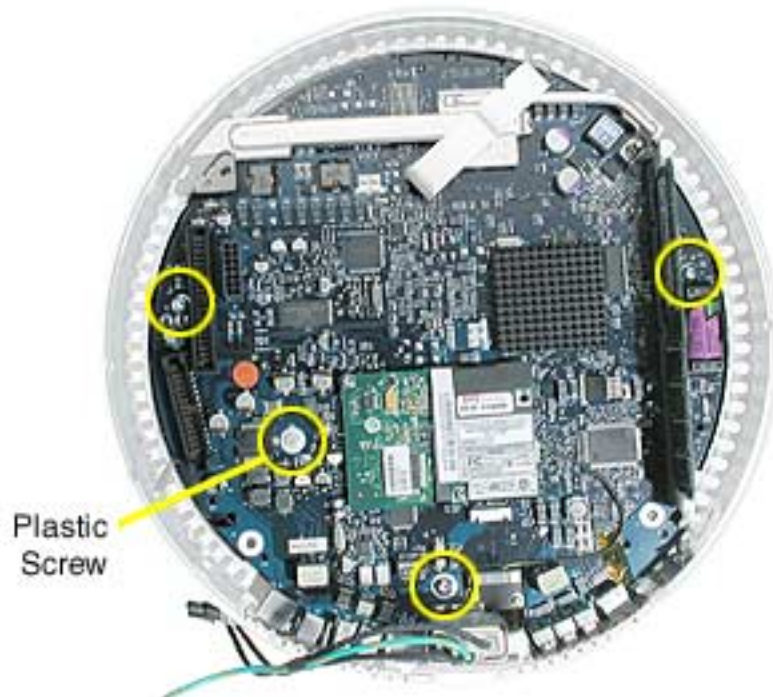
Preliminary Steps

Before you begin, do the following:

- Position the computer in the service stand.
- Remove the user access plate.
- Remove the bottom housing.
- Remove the RJ-11 board.

Procedure

1. Remove the three metal torx screws and the one plastic screw.



2. Grab the logic board by the battery retainer and the hard drive connector. Lift the board and pull back to release the board from the bottom housing and I/O ports. **Note:** The I/O port covers may come out with the logic board when it's removed.



3. Remove the I/O port covers from the logic board.

Warning: Whenever the logic board is separated from the bottom housing, you must install new thermal pads to three surfaces on the bottom housing. Failure to apply these pads whenever the logic board is separated from the bottom housing could cause these parts to overheat and could damage internal components.

Note: AFTER installing new thermal pads, if you must briefly re-separate the logic board from the housing, it is OK to retain the same, new pads as long as they are not handled excessively. Refer to “Thermal Pad Installation” in this chapter for detailed information.

Warning: Whenever the bottom housing is opened for service, you must do two things:

1. You must clean the original thermal film from all thermal interface mating surfaces, and reapply thermal paste to the mating surfaces on the thermal pipe.
2. You must tighten the four torx screws on the bottom housing to a minimum of 17 in.-lbs. Use a torque driver (service tool 076-0899) to ensure that the thermal pipe is firmly mated with the top base. If you do not have a torque driver, you must make sure the screws are tightened by hand **FIRMLY, BUT NOT FORCIBLY**.

Warning: Failure to follow these steps could cause the computer to overheat and damage internal components.

Refer to the topic “Thermal Paste Application” for detailed information.



I/O Port Covers

Tools

This procedure requires the following tools:

- No tools are required

Part Location



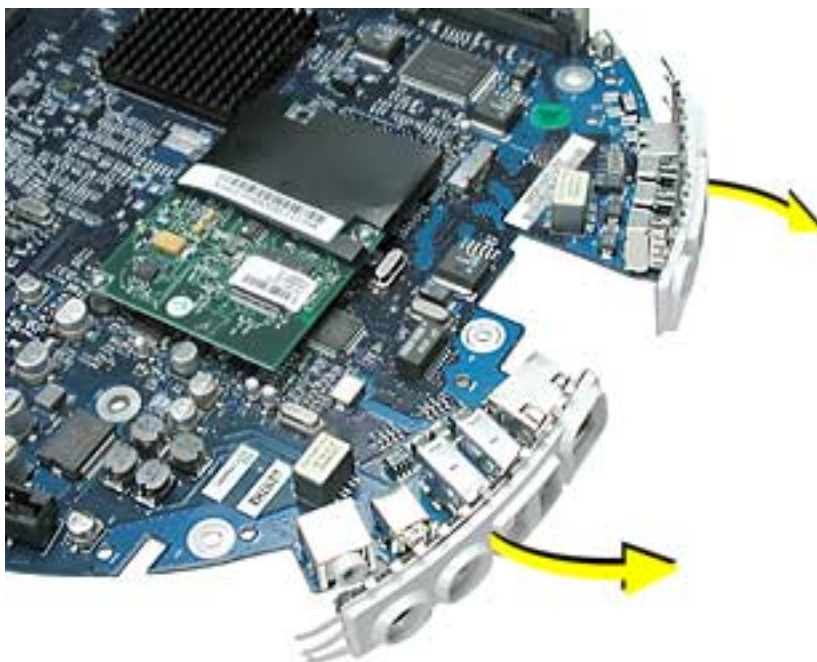
Preliminary Steps

Before you begin, do the following:

- Position the computer in the service stand.
- Remove the user access plate.
- Remove the bottom housing.
- Remove the RJ-11 board
- Remove the logic board.

Procedure

1. Gently remove the I/O port covers from the logic board.



Warning: Whenever the bottom housing is opened for service, you must do two things:

1. You must clean the original thermal film from all thermal interface mating surfaces, and reapply thermal paste to the mating surfaces on the thermal pipe.
2. You must tighten the four torx screws on the bottom housing to a minimum of 17 in.-lbs. Use a torque driver (service tool 076-0899) to ensure that the thermal pipe is firmly mated with the top base. If you do not have a torque driver, you must make sure the screws are tightened by hand **FIRMLY, BUT NOT FORCIBLY**.

Warning: Failure to follow these steps could cause the computer to overheat and damage internal components.

Refer to the topic “Thermal Paste Application” for detailed information.

Warning: Whenever the logic board is separated from the bottom housing, you must install new thermal pads to three surfaces on the bottom housing. Failure to apply these pads whenever the logic board is separated from the bottom housing could cause these parts to overheat and could damage internal components.

Note: AFTER installing new thermal pads, if you must briefly re-separate the logic board from the housing, it is OK to retain the same, new pads as long as they are not handled excessively. Refer to “Thermal Pad Installation” in this chapter for detailed information.



Antenna Extension Cable

Tools

This procedure requires the following tools:

- Torx-10 screwdriver

Part Location



Preliminary Steps

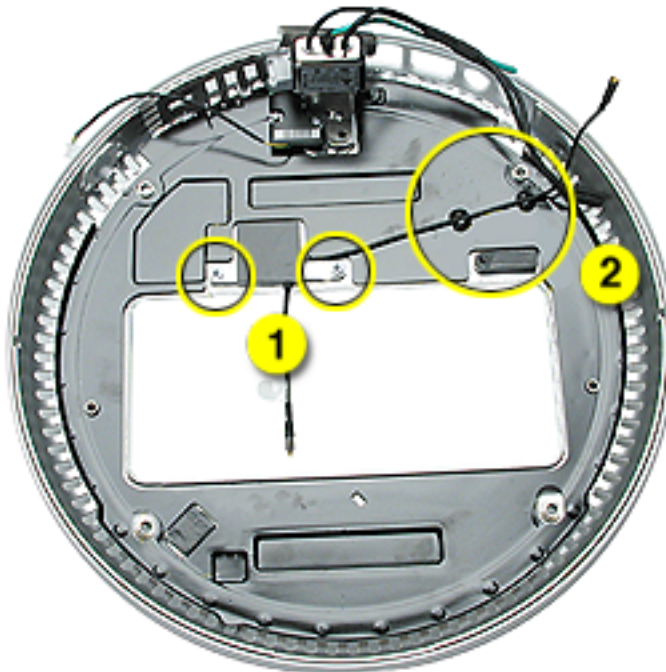
Before you begin, do the following:

- Position the computer in the service stand.
- Remove the user access plate.
- Remove the bottom housing.
- Remove the RJ-11 board
- Remove the logic board.

Procedure

1. Remove two screws (1 below) from the thermal interface layer of the bottom housing.
2. Pry up the thermal interface layer to separate it from the bottom housing. Remove the cable from two plastic cable clips (2 below).

Replacement Note: Be careful not to pinch the antenna extension cable when replacing it beneath the thermal interface layer; position the cable in the channel cut into the bottom of the thermal extension layer.



Warning: Whenever the bottom housing is opened for service, you must do two things:

1. You must clean the original thermal film from all thermal interface mating surfaces, and reapply thermal paste to the mating surfaces on the thermal pipe.
2. You must tighten the four torx screws on the bottom housing to a minimum of 17 in.-lbs. Use a torque driver (service tool 076-0899) to ensure that the thermal pipe is firmly mated with the top base. If you do not have a torque driver, you must make sure the screws are tightened by hand **FIRMLY, BUT NOT FORCIBLY**.

Warning: Failure to follow these steps could cause the computer to overheat and damage internal components.

Refer to the topic “Thermal Paste Application” for detailed information.

Warning: Whenever the logic board is separated from the bottom housing, you must install new thermal pads to three surfaces on the bottom housing. Failure to apply these pads whenever the logic board is separated from the bottom housing could cause these

parts to overheat and could damage internal components.

Note: AFTER installing new thermal pads, if you must briefly re-separate the logic board from the housing, it is OK to retain the same, new pads as long as they are not handled excessively. Refer to “Thermal Pad Installation” in this chapter for detailed information.

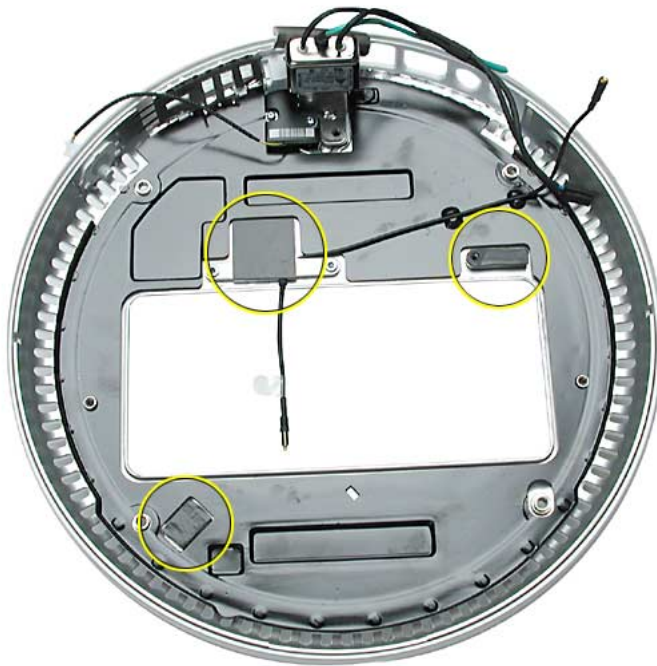


Thermal Pad Installation

Tools

- No tools are required.
- Thermal pad kit

Part Location

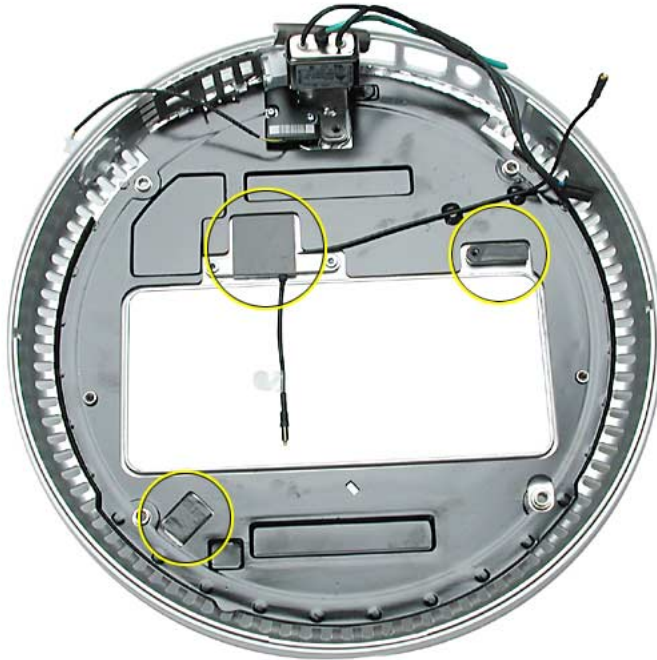


Warning: Whenever the logic board is separated from the bottom housing, you must install new thermal pads to three surfaces on the bottom housing. Failure to apply these pads whenever the logic board is separated from the bottom housing could cause these parts to overheat and could damage internal components.

Note: AFTER installing new thermal pads, if you must briefly re-separate the logic board from the housing, it is OK to retain the same, new pads as long as they are not handled excessively. Refer to “Thermal Pad Installation” in this chapter for detailed information.

Procedure

1. Remove the old thermal pads (shown below) from the bottom housing. **Note:** If you don't see all three thermal pads on the bottom housing, check the bottom side of the logic board. The thermal pads may stick to the logic board. Either way, remove the old thermal pads.



2. Using the thermal pad kit, remove the clear protective backing from the new thermal pads.
3. Place the new thermal pads on the bottom housing. Press down on the blue protective backing to make sure the thermal pad has even contact with the bottom housing. There should be no air pockets.
4. Remove the blue protective backing from the new thermal pad. **Note:** Avoid unnecessary contact with either side of the thermal pad as dirt and body oils reduce the thermal pad's conductivity.
5. Holding the logic board by the battery retainer and the internal drive cable connector, slide the logic board back into the bottom housing (make sure the I/O port covers are on the logic board). **Important:** Do not push on the heatsink for leverage, as you could knock it off the chip.



AC Line Filter

Tools

This procedure requires the following tools:

- Torx-10 screwdriver

Part Location



Preliminary Steps

Before you begin, do the following:

- Position the computer in the service stand.
- Remove the user access plate.
- Remove the bottom housing.
- Remove the RJ-11 board.
- Remove the logic board.

Procedure

1. Peel back the black insulator on the bottom housing to access the AC line filter screws.



2. Remove two screws and lift the AC line filter from the bottom housing. **Note:** The AC line port cover plug may fall out of the bottom housing when you remove the AC line filter. Place the plug back into the bottom housing before reinstalling the AC line filter.



Warning: Whenever the bottom housing is opened for service, you must do two things:

1. You must clean the original thermal film from all thermal interface mating surfaces, and reapply thermal paste to the mating surfaces on the thermal pipe.
2. You must tighten the four torx screws on the bottom housing to a minimum of 17 in.-lbs. Use a torque driver (service tool 076-0899) to ensure that the thermal pipe is firmly mated with the top base. If you do not have a torque driver, you must make sure the screws are tightened by hand **FIRMLY, BUT NOT FORCIBLY**.

Warning: Failure to follow these steps could cause the computer to overheat and damage internal components.

Refer to the topic “Thermal Paste Application” for detailed information.

Warning: Whenever the logic board is separated from the bottom housing, you must install new thermal pads to three surfaces on the bottom housing. Failure to apply these pads whenever the logic board is separated from the bottom housing could cause these parts to overheat and could damage internal components.

Note: AFTER installing new thermal pads, if you must briefly re-separate the logic board from the housing, it is OK to retain the same, new pads as long as they are not handled excessively. Refer to “Thermal Pad Installation” in this chapter for detailed information.



Drive Carrier Assembly (Optical and Hard Drive)

Tools

This procedure requires the following tools:

- Torx-10 screwdriver

Part Location



Preliminary Steps

Before you begin, do the following:

- Position the computer in the service stand with the door facing up.
- Remove the user access plate.
- Remove the bottom housing.

Procedure

1. Rotate the base unit so the optical drive door is facing up (as shown below).
2. Remove two screws on the EMI shield. Carefully lift the shield and peel the copper tape off the drive. **Replacement Note:** When replacing the EMI shield, be sure to use the two shorter screws. The longer screws will scratch the top housing.



3. Remove four screws attaching the drive carrier to the metal chassis (also known as the Faraday cage).



4. Remove the Airport antenna and the video cable from the plastic clip on the side of the hard drive.



5. Grasp the carrier on both sides. Lift and pull the carrier in the direction of the arrow. Once the carrier is out, flip the carrier to the right to disconnect the power cables.

Note: The carrier fits snugly into the chassis.

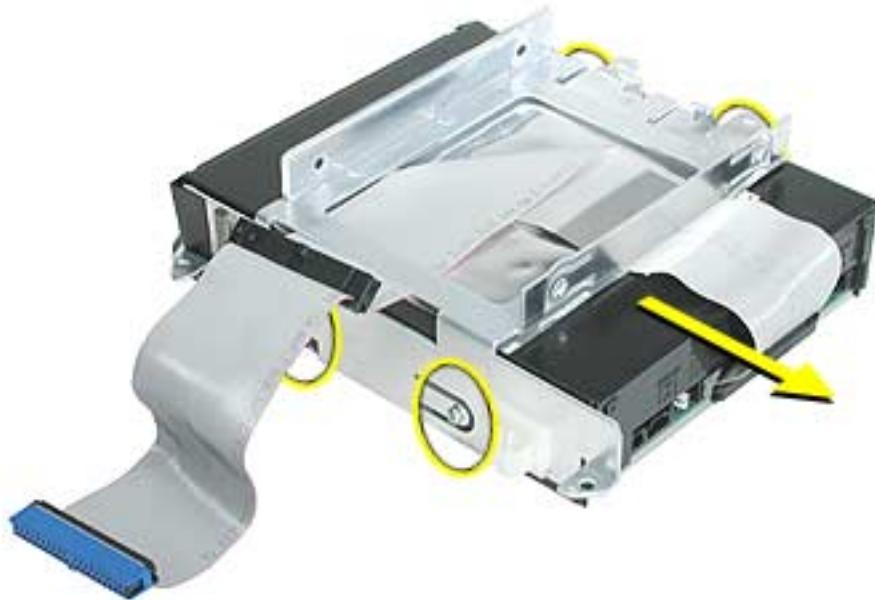


6. Peel the white wrapper up to access the screws connecting the hard drive to the carrier. Remove four screws and the hard drive.



7. Disconnect the data cables.

8. Remove four screws (shown by circles) to remove the optical drive from the carrier.



9. Slide the optical drive out of the carrier. Be careful of the black plastic dust filter on the carrier. It is very fragile and can rip easily if not handled properly. **Note:** The silver insulator is part of the carrier assembly.



Warning: Whenever the bottom housing is opened for service, you must do two things:

1. You must clean the original thermal film from all thermal interface mating surfaces, and reapply thermal paste to the mating surfaces on the thermal pipe.
2. You must tighten the four torx screws on the bottom housing to a minimum of 17 in.-lbs. Use a torque driver (service tool 076-0899) to ensure that the thermal pipe is firmly mated with the top base. If you do not have a torque driver, you must make sure the screws are tightened by hand **FIRMLY, BUT NOT FORCIBLY**.

Warning: Failure to follow these steps could cause the computer to overheat and damage internal components.

Refer to the topic “Thermal Paste Application” for detailed information.



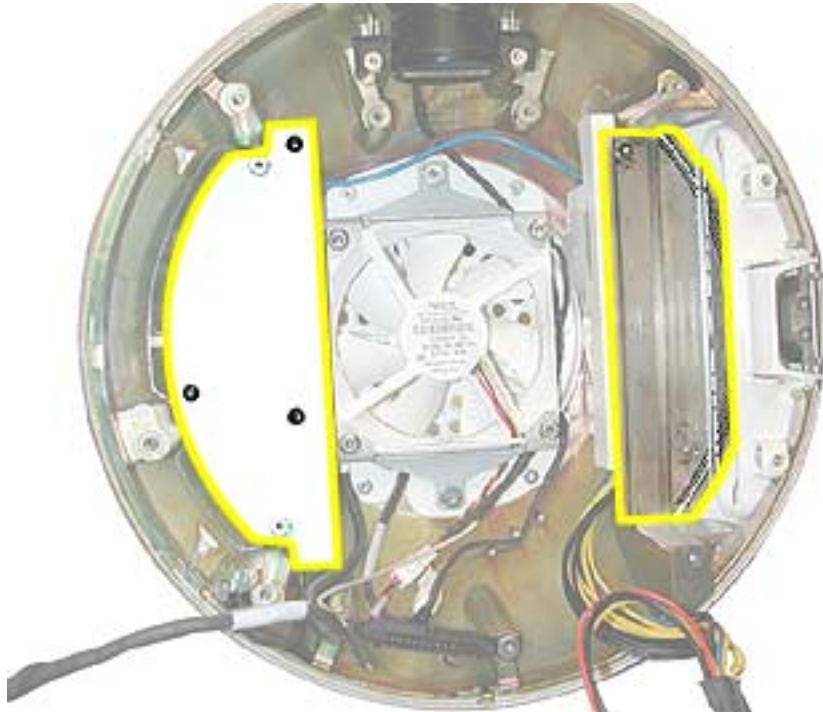
Power Supply

Tools

This procedure requires the following tools:

- Torx-10 screwdriver

Part Location



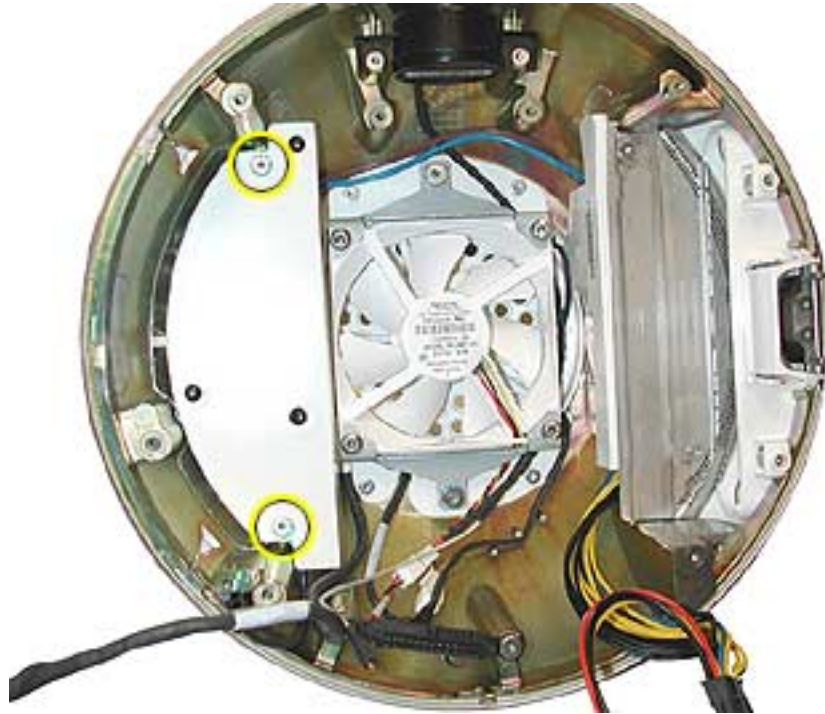
Preliminary Steps

Before you begin, do the following:

- Position the computer in the service stand and rotate the door to the right.
- Remove the user access plate.
- Remove the bottom housing.
- Remove the drive carrier assembly.

Procedure

1. Remove the two power supply screws circled below.

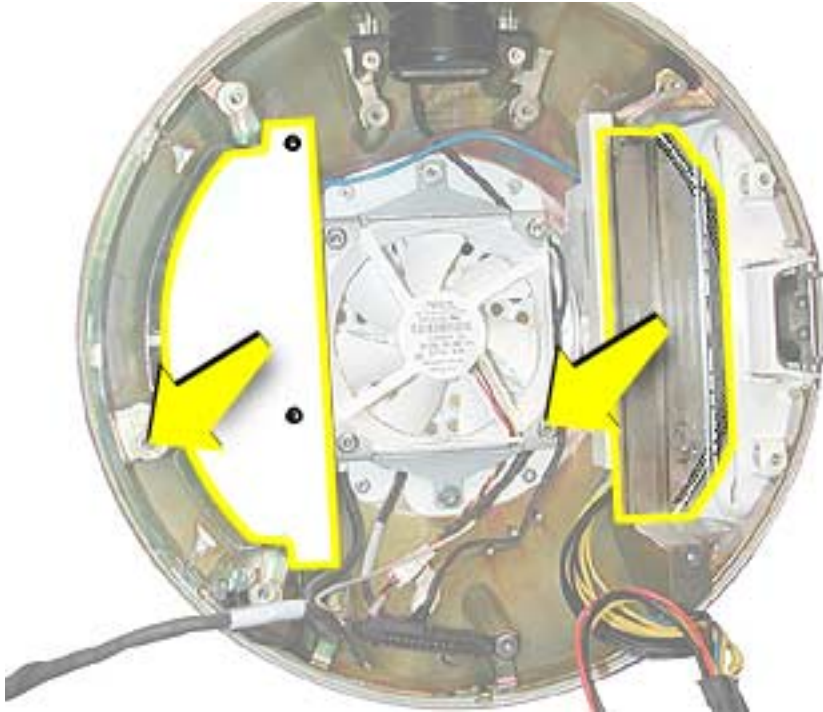


2. Open the optical drive door as shown. Support the metal plate and power supply as you remove the four screws.

Important: The two screws near the door hinge are shorter than the other power supply screws. Failure to replace the shorter screws into their correct location will scratch the top housing. See step 4, Replacement Note.



3. Remove the power supply and metal shield from the chassis (Faraday cage).



4. **Replacement Note:** When replacing the metal shield (see picture above) that sits on top of the power supply, make certain that the two shorter screws are inserted into the screw holes near the optical door. If the longer screws are inserted by mistake, the screws will scratch the top housing (circled below).



Warning: Whenever the bottom housing is opened for service, you must do two things:

1. You must clean the original thermal film from all thermal interface mating surfaces, and reapply thermal paste to the mating surfaces on the thermal pipe.
2. You must tighten the four torx screws on the bottom housing to a minimum of 17 in.-lbs. Use a torque driver (service tool 076-0899) to ensure that the thermal pipe is firmly mated with the top base. If you do not have a torque driver, you must make sure the screws are tightened by hand **FIRMLY, BUT NOT FORCIBLY**.

Warning: Failure to follow these steps could cause the computer to overheat and damage internal components.

Refer to the topic “Thermal Paste Application” for detailed information.



Optical Drive Door

Tools

This procedure requires the following tools:

- Torx-10 screwdriver
- Needlenose pliers

Part Location



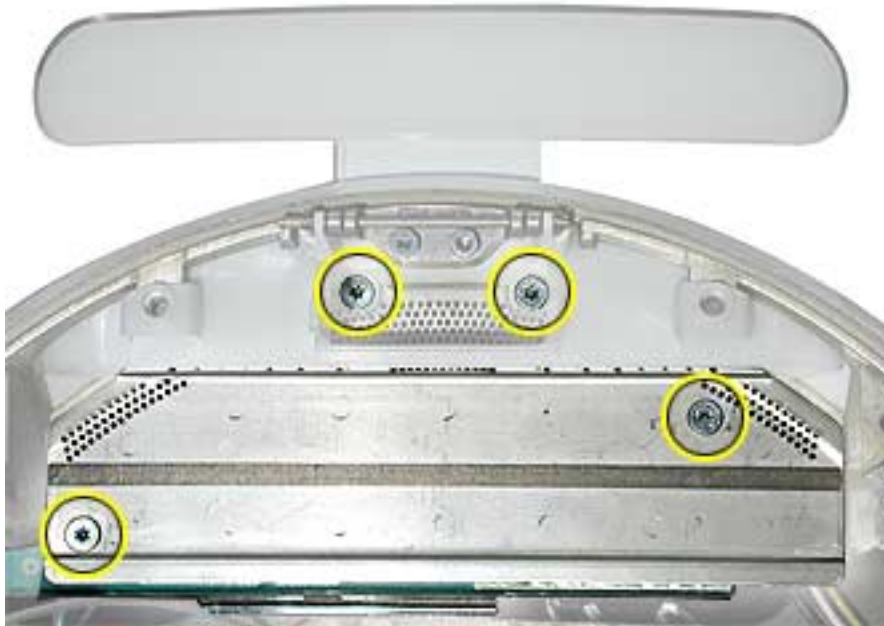
Preliminary Steps

Before you begin, do the following:

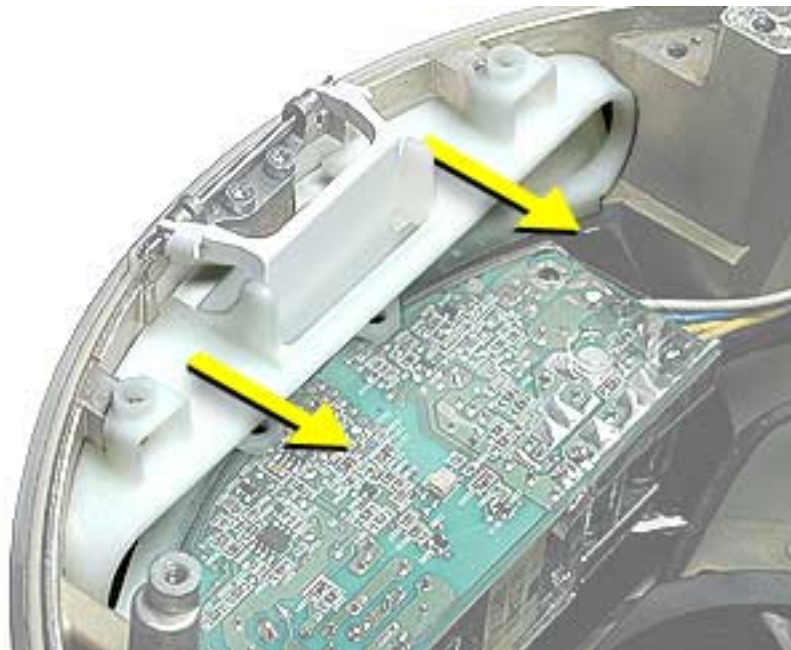
- Position the computer in the service stand.
- Remove the user access plate.
- Remove the bottom housing.
- Remove the drive carrier assembly.

Procedure

1. Remove the four screws on the DVD shield. Set the shield aside.
Important: The two screws near the door hinge are shorter than the other power supply screws. Failure to replace the shorter screws to their correct location will scratch the top housing. See step 4, Replacement Note in the Power Supply section for a picture.



- Slide the optical door guide off the chassis.



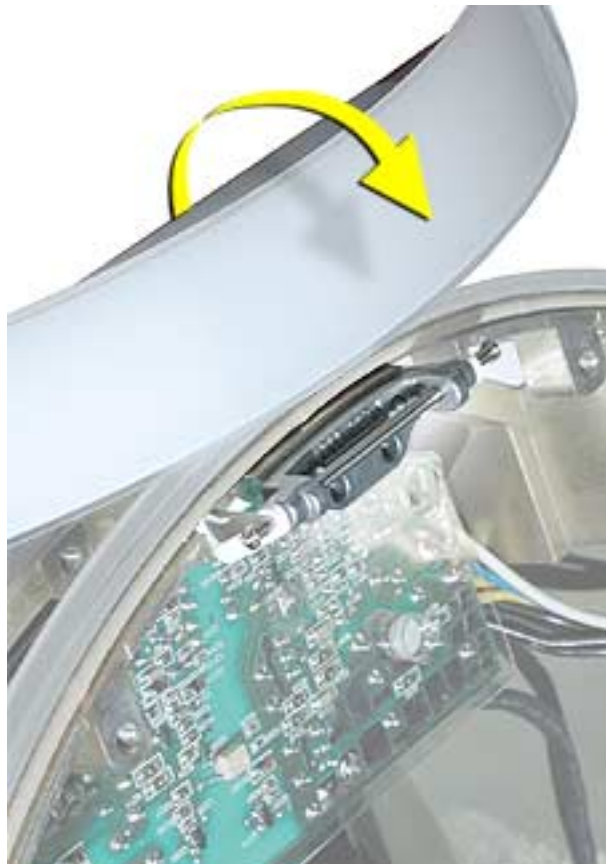
- Carefully remove the two door springs with a needlenose pliers.



4. Remove the door hinge screws.



5. Open the door open.



- Slide the door and hinge off the frame. Remove the door from the base.



Warning: Whenever the bottom housing is opened for service, you must do two things:

1. You must clean the original thermal film from all thermal interface mating surfaces, and reapply thermal paste to the mating surfaces on the thermal pipe.
2. You must tighten the four torx screws on the bottom housing to a minimum of 17 in.-lbs. Use a torque driver (service tool 076-0899) to ensure that the thermal pipe is firmly mated with the top base. If you do not have a torque driver, you must make sure the screws are tightened by hand **FIRMLY, BUT NOT FORCIBLY**.

Warning: Failure to follow these steps could cause the computer to overheat and damage internal components.

Refer to the topic “Thermal Paste Application” for detailed information.



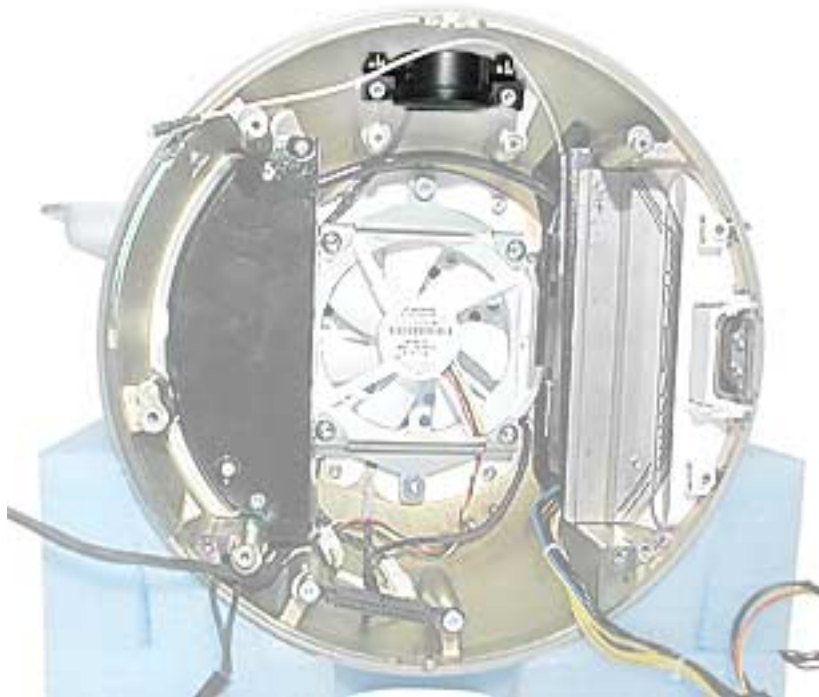
Speaker, Internal

Tools

This procedure requires the following tools:

- Torx-10 screwdriver

Part Location



Preliminary Steps

Before you begin, do the following:

- Position the computer in the service stand.
- Remove the user access plate.
- Remove the bottom housing.
- Remove the drive carrier assembly.

Procedure

1. Loosen the two screws enough to slide the speaker off the metal posts. Disconnect the speaker cable.



Warning: Whenever the bottom housing is opened for service, you must do two things:

1. You must clean the original thermal film from all thermal interface mating surfaces, and reapply thermal paste to the mating surfaces on the thermal pipe.
2. You must tighten the four torx screws on the bottom housing to a minimum of 17 in.-lbs. Use a torque driver (service tool 076-0899) to ensure that the thermal pipe is firmly mated with the top base. If you do not have a torque driver, you must make sure the screws are tightened by hand **FIRMLY, BUT NOT FORCIBLY**.

Warning: Failure to follow these steps could cause the computer to overheat and damage internal components.

Refer to the topic “Thermal Paste Application” for detailed information.



Fan

Tools

This procedure requires the following tools:

- Torx-15 screwdriver

Part Location



Preliminary Steps

Before you begin, do the following:

- Position the computer in the service stand.
- Remove the user access plate.
- Remove the bottom housing.
- Remove the drive carrier assembly.

Procedure

1. Remove the two fan screws and disconnect the fan connector.
2. Lift the fan out of the chassis (Faraday cage). **Note:** The replacement fan includes the mounting bracket.



Warning: Whenever the bottom housing is opened for service, you must do two things:

1. You must clean the original thermal film from all thermal interface mating surfaces, and reapply thermal paste to the mating surfaces on the thermal pipe.
2. You must tighten the four torx screws on the bottom housing to a minimum of 17 in.-lbs. Use a torque driver (service tool 076-0899) to ensure that the thermal pipe is firmly mated with the top base. If you do not have a torque driver, you must make sure the screws are tightened by hand **FIRMLY, BUT NOT FORCIBLY**.

Warning: Failure to follow these steps could cause the computer to overheat and damage internal components.

Refer to the topic “Thermal Paste Application” for detailed information.



Power Supply Insulators

Tools

No tools are required for this procedure.

Part Location



Note: Insulator color and transparency may vary from those shown above.

Preliminary Steps

Before you begin, do the following:

- Position the computer in the service stand.
- Remove the user access plate.
- Remove the bottom housing.
- Remove the drive carrier assembly.
- Remove the power supply.

Procedure

1. Carefully pull the insulators from the chassis (Faraday cage). These are attached to the chassis with double-sided tape.



Warning: Whenever the bottom housing is opened for service, you must do two things:

1. You must clean the original thermal film from all thermal interface mating surfaces, and reapply thermal paste to the mating surfaces on the thermal pipe.
2. You must tighten the four torx screws on the bottom housing to a minimum of 17 in.-lbs. Use a torque driver (service tool 076-0899) to ensure that the thermal pipe is firmly mated with the top base. If you do not have a torque driver, you must make sure the screws are tightened by hand **FIRMLY, BUT NOT FORCIBLY**.

Warning: Failure to follow these steps could cause the computer to overheat and damage internal components.

Refer to the topic “Thermal Paste Application” for detailed information.



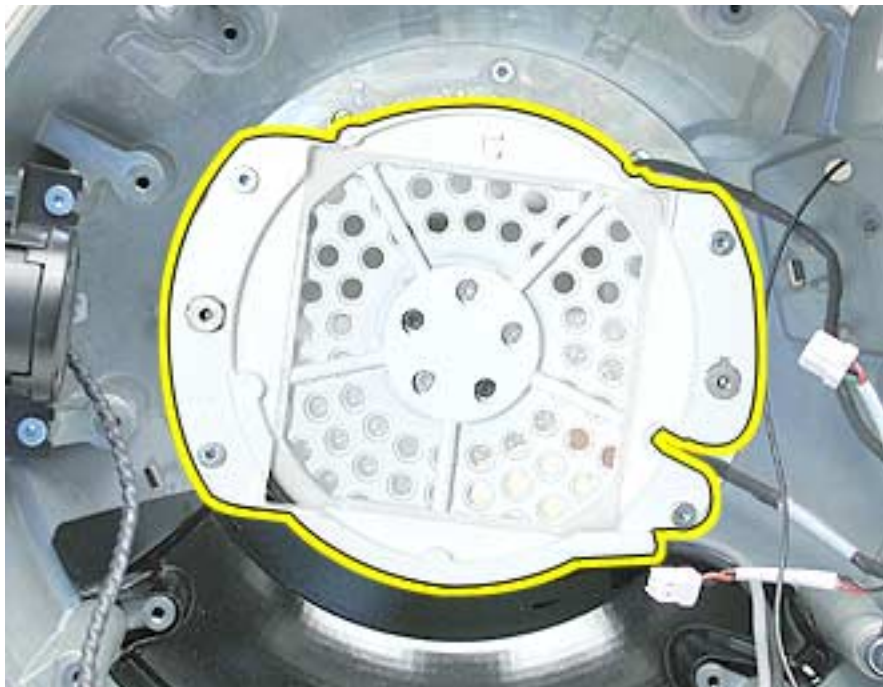
Fan Bracket (under fan)

Tools

This procedure requires the following tools:

- Torx-10 screwdriver

Part Location



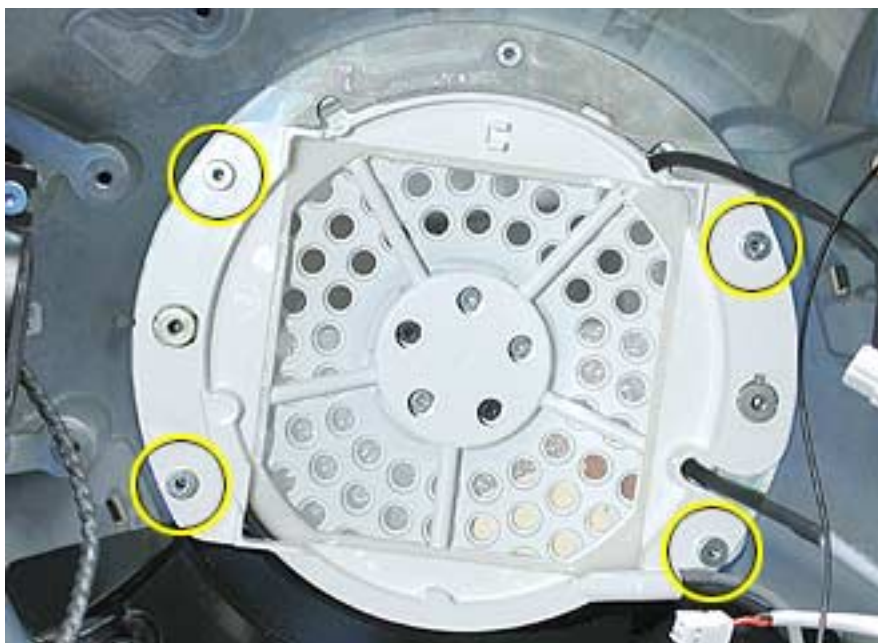
Preliminary Steps

Before you begin, do the following:

- Position the computer in the service stand.
- Remove the user access plate.
- Remove the bottom housing.
- Remove the drive carrier assembly.
- Remove the power supply.
- Remove the fan.

Procedure

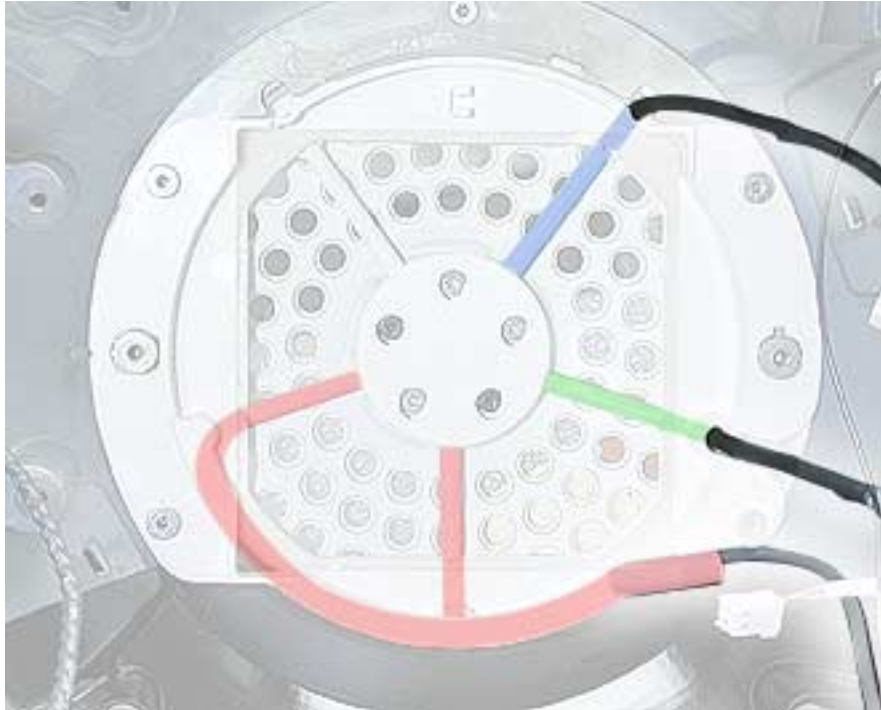
1. Remove the four screws connecting the fan bracket to the chassis (Faraday cage).



2. Lift the fan bracket from the chassis. **Note:** The fan gasket is stuck to the back side of the fan bracket.

Replacement Note: For reassembly, note the orientation of the neck cables (see below) in the fan bracket:

- **Blue** Blind Mate Connector cable
- **Green** Blind Mate Connector cable
- **Red** TMDS video cable



Warning: Whenever the bottom housing is opened for service, you must do two things:

1. You must clean the original thermal film from all thermal interface mating surfaces, and reapply thermal paste to the mating surfaces on the thermal pipe.
2. You must tighten the four torx screws on the bottom housing to a minimum of 17 in.-lbs. Use a torque driver (service tool 076-0899) to ensure that the thermal pipe is firmly mated with the top base. If you do not have a torque driver, you must make sure the screws are tightened by hand **FIRMLY, BUT NOT FORCIBLY**.

Warning: Failure to follow these steps could cause the computer to overheat and damage internal components.

Refer to the topic “Thermal Paste Application” for detailed information.

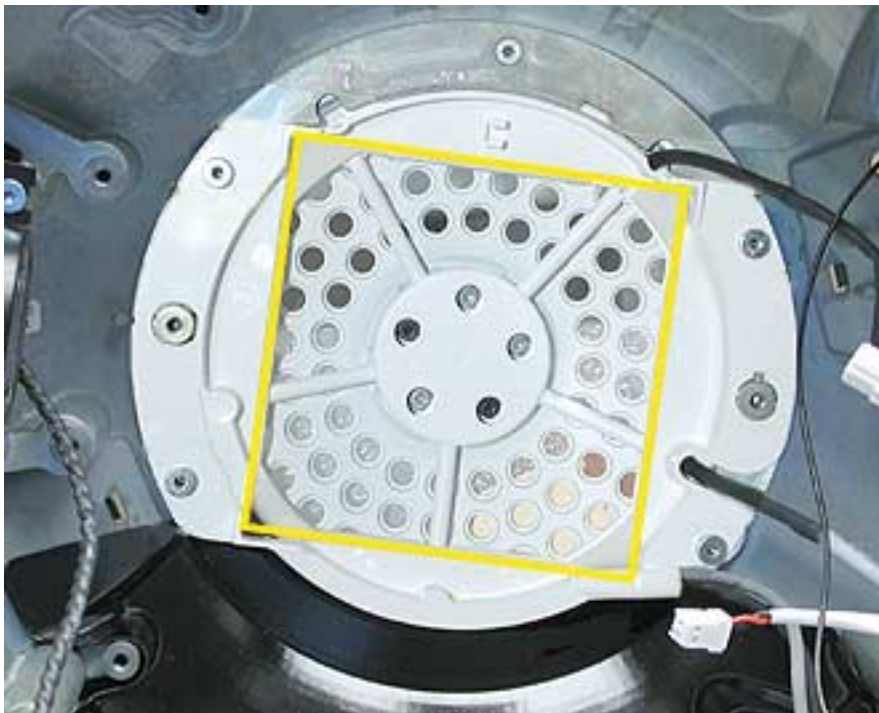


Fan Gasket

Tools

No tools are required for this procedure.

Part Location



Preliminary Steps

Before you begin, do the following:

- Position the computer in the service stand.
- Remove the user access plate.
- Remove the bottom housing.
- Remove the drive carrier assembly.
- Remove the power supply.
- Remove the fan.
- Remove the fan bracket.

Procedure

1. Remove the fan bracket retainer and turn it over. Gently peel the fan gasket off the back of the fan bracket.



Warning: Whenever the bottom housing is opened for service, you must do two things:

1. You must clean the original thermal film from all thermal interface mating surfaces, and reapply thermal paste to the mating surfaces on the thermal pipe.
2. You must tighten the four torx screws on the bottom housing to a minimum of 17 in.-lbs. Use a torque driver (service tool 076-0899) to ensure that the thermal pipe is firmly mated with the top base. If you do not have a torque driver, you must make sure the screws are tightened by hand **FIRMLY, BUT NOT FORCIBLY**.

Warning: Failure to follow these steps could cause the computer to overheat and damage internal components.

Refer to the topic “Thermal Paste Application” for detailed information.



Cap, Neck Spoke Retainer

Tools

This procedure requires the following tools:

- Torx-10 screwdriver

Part Location



Preliminary Steps

Before you begin, do the following:

- Position the computer in the service stand.
- Remove the user access plate.
- Remove the bottom housing.
- Remove the drive carrier assembly.
- Remove the power supply.
- Remove the fan.

Procedure

1. The neck cables are highlighted below. Note the cable routing, including the blind mate connector orientation before removing the cap screws and neck cap.



2. There are five screws on the neck cap; however, only the three silver screws need to be removed. The remaining two black screws keep the neck attached to the base.



3. Lift the neck cap off the cables. The two remaining black screws hold the neck to the base. Note the orientation for neck reassembly.



Warning: Whenever the bottom housing is opened for service, you must do two things:

1. You must clean the original thermal film from all thermal interface mating surfaces, and reapply thermal paste to the mating surfaces on the thermal pipe.
2. You must tighten the four torx screws on the bottom housing to a minimum of 17 in.-lbs. Use a torque driver (service tool 076-0899) to ensure that the thermal pipe is firmly mated with the top base. If you do not have a torque driver, you must make sure the screws are tightened by hand **FIRMLY, BUT NOT FORCIBLY**.

Warning: Failure to follow these steps could cause the computer to overheat and damage internal components.

Refer to the topic “Thermal Paste Application” for detailed information.



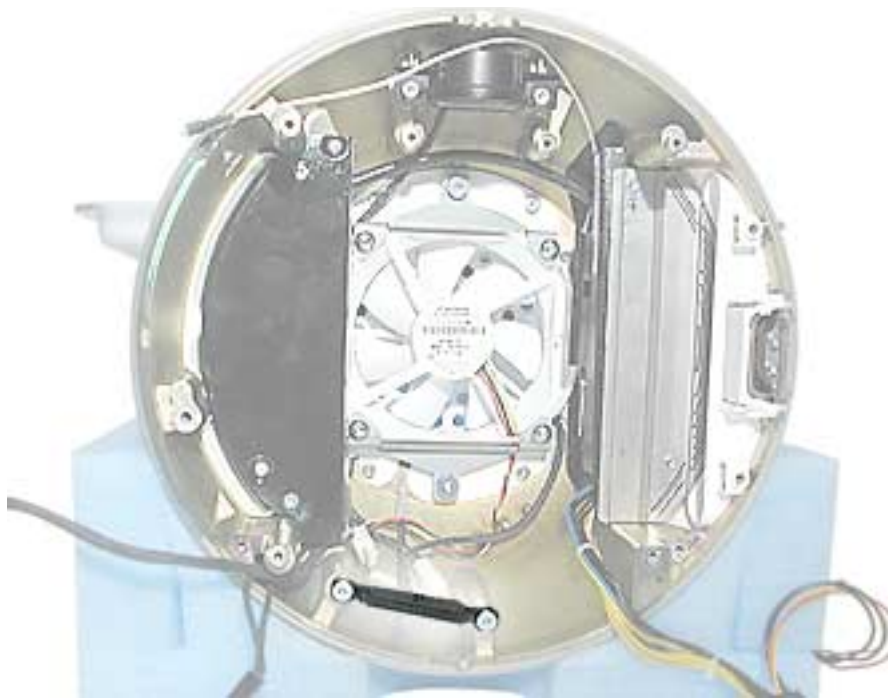
Blind Mate Connector

Tools

This procedure requires the following tools:

- Torx-10 screwdriver

Part Location



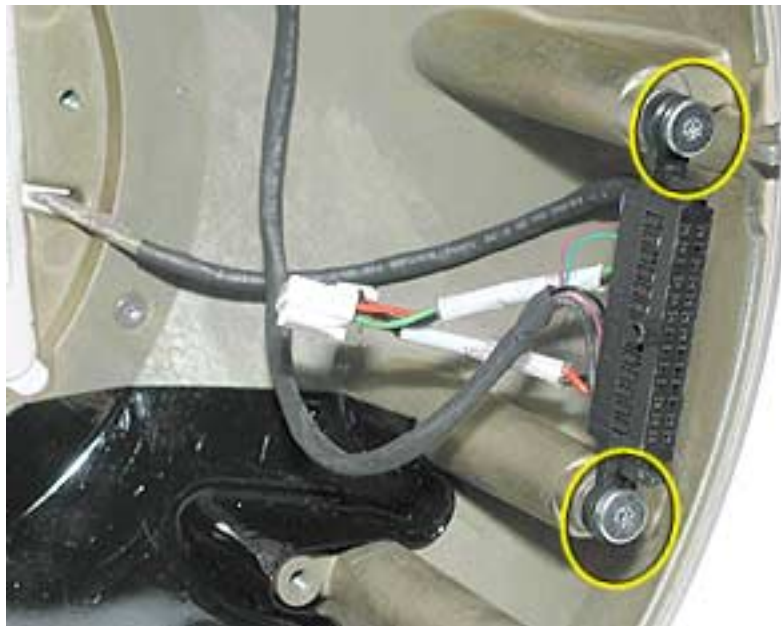
Preliminary Steps

Before you begin, do the following:

- Position the computer in the service stand.
- Remove the user access plate.
- Remove the bottom housing.
- Remove the drive carrier assembly.
- Remove the power supply.
- Remove the fan.
- Remove the fan bracket.
- Remove the neck spoke retainer cap.

Procedure

1. Remove the two screws.
2. Lift the blind mate connector off the chassis. **Note:** The blind mate connector is part of the neck assembly.



Replacement Notes:

Blind Mate Connector: Make sure to replace the connector into the chassis with the tab on the blind mate connector facing inward (toward the fan). And, when tightening the screws, the blind mate connector should have some play; do not tighten down so it doesn't move at all.

Warning: Whenever the bottom housing is opened for service, you must do two things:

1. You must clean the original thermal film from all thermal interface mating surfaces, and reapply thermal paste to the mating surfaces on the thermal pipe.
2. You must tighten the four torx screws on the bottom housing to a minimum of 17 in.-lbs. Use a torque driver (service tool 076-0899) to ensure that the thermal pipe is firmly mated with the top base. If you do not have a torque driver, you must make sure the screws are tightened by hand **FIRMLY, BUT NOT FORCIBLY**.

Warning: Failure to follow these steps could cause the computer to overheat and damage internal components.

Refer to the topic "Thermal Paste Application" for detailed information.



Chassis (Faraday Cage)

Tools

This procedure requires the following tools:

- Torx-10 screwdriver
- Torx-8 screwdriver for the logo screw

Part Location



Preliminary Steps

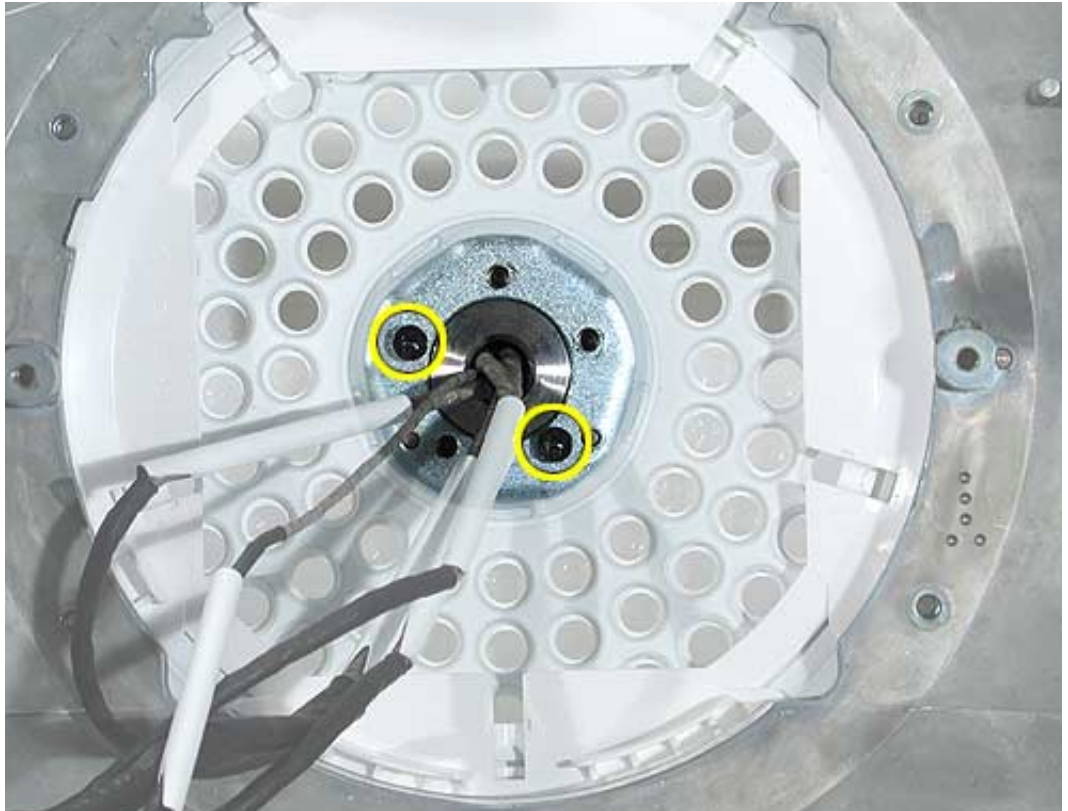
Before you begin, do the following:

- Position the computer in the service stand.
- Remove the user access plate.
- Remove the bottom housing.
- Remove the drive carrier assembly.

- Remove the power supply.
- Remove the fan.
- Remove the plastic cable retainer (under the fan).
- Remove the neck spoke retainer cap.
- Remove the blind mate connector screws.

Procedure

1. Bundle the neck cables to one side (as shown). Supporting the base, remove the two black screws that connect the neck to the Faraday base.



2. Carefully feed the neck cables through the hole in the Faraday cage. **Important:** The Faraday cage is very heavy and has sharp edges; handle with care.



3. Pull the outer shell (with Faraday attached) away from the neck. **Note:** There is no need to remove the outer shell from the Faraday unless you are replacing the antenna or the outer shell. If you are removing the shell from the Faraday cage, go on to the next step.

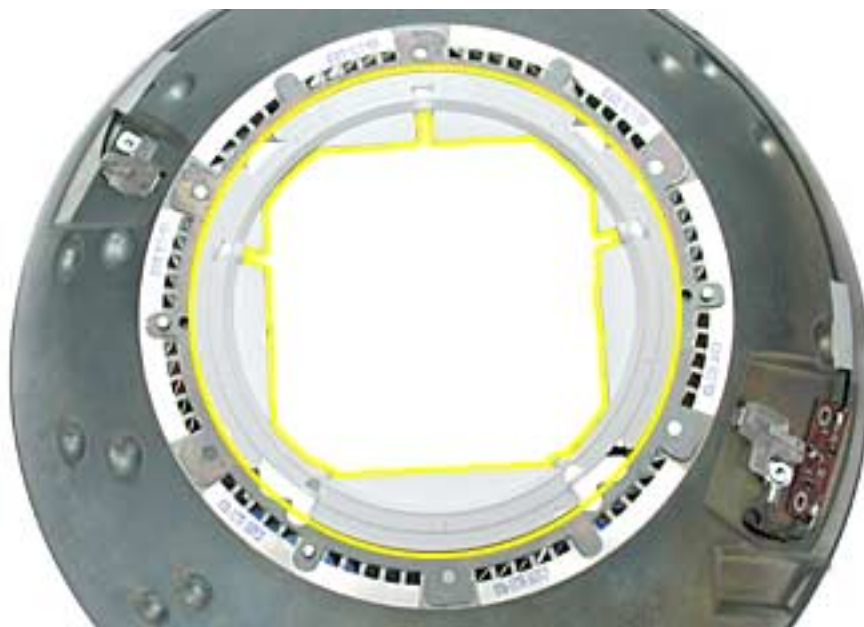


4. **Note:** : Perform this step only if you are replacing the antenna or the outer shell. Remove the three screws in the base of the Faraday cage to separate the shell from the Faraday cage.



Replacement Notes:

5. **Faraday cage:** Look at the exploded view diagram during reassembly. First, attach the Faraday top cover to the top (OUTSIDE) of the Faraday cage **as shown below**; the Faraday top cover is keyed. Next, thread the neck cables through the hole in the Faraday cage and install the Faraday cage into the top plastic housing. Replace the three screws that hold the plastic housing to the chassis. Attach two neck cap screws to connect the neck to the chassis. Then route the neck cables correctly in the base and replace the fan bracket retainer and three remaining cap screws.



Warning: Whenever the bottom housing is opened for service, you must do two things:

1. You must clean the original thermal film from all thermal interface mating surfaces, and reapply thermal paste to the mating surfaces on the thermal pipe.
2. You must tighten the four torx screws on the bottom housing to a minimum of 17 in.-lbs. Use a torque driver (service tool 076-0899) to ensure that the thermal pipe is firmly mated with the top base. If you do not have a torque driver, you must make sure the screws are tightened by hand **FIRMLY, BUT NOT FORCIBLY**.

Warning: Failure to follow these steps could cause the computer to overheat and damage internal components.

Refer to the topic “Thermal Paste Application” for detailed information.



AirPort Antenna

Tools

This procedure requires the following tools:

- Torx-8 screwdriver

Part Location



Preliminary Steps

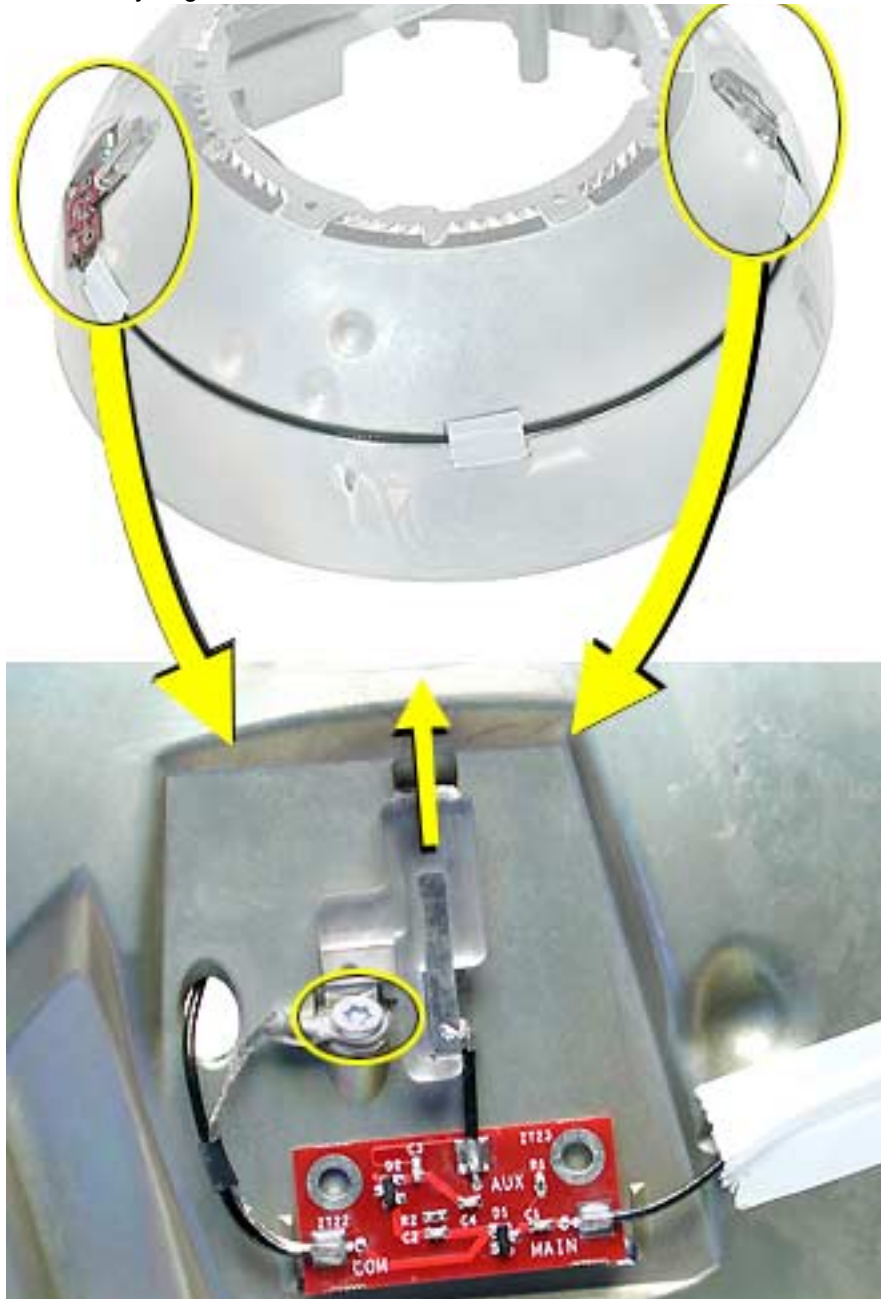
Before you begin, do the following:

- Position the computer in the service stand.
- Remove the user access plate.
- Remove the bottom housing.
- Remove the drive carrier assembly.
- Remove the power supply.
- Remove the power supply insulators.
- Remove the optical drive door.
- Remove the internal speaker.
- Remove the fan.

- Remove the fan bracket under the fan.
- Remove the neck spoke retainer cap.
- Remove the blind mate connector screws.
- Remove the Faraday cage.

Procedure

1. Remove the mounting screw and unclip each of two antenna boards from the Faraday cage. Remove any tape, and carefully separate the antenna board cable from the Faraday cage.



Warning: Whenever the bottom housing is opened for service, you must do two things:

1. You must clean the original thermal film from all thermal interface mating surfaces, and reapply thermal paste to the mating surfaces on the thermal pipe.
2. You must tighten the four torx screws on the bottom housing to a minimum of 17 in.-lbs. Use a torque driver (service tool 076-0899) to ensure that the thermal pipe is firmly mated with the top base. If you do not have a torque driver, you must make sure the screws are tightened by hand **FIRMLY, BUT NOT FORCIBLY**.

Warning: Failure to follow these steps could cause the computer to overheat and damage internal components.

Refer to the topic “Thermal Paste Application” for detailed information.



Housing, Outer Shell, Plastic

Tools

This procedure requires the following tools:

- Torx-10 screwdriver

Part Location



Preliminary Steps

Before you begin, do the following:

- Position the computer in the service stand.
- Remove the user access plate.
- Remove the bottom housing.
- Remove the drive carrier assembly.
- Remove the power supply.
- Remove the power supply insulators.
- Remove the optical drive door.
- Remove the fan.
- Remove the fan bracket under the fan.

-
- Remove the neck spoke retainer cap.
 - Remove the blind mate connector screws.

Procedure

1. Remove the two black screws that connects the neck to the base.



2. Carefully feed the neck cables through the hole on the vent cap shown below. Start with the blind mate connector and cables, then the long video cable



3. Next, carefully separate the outer plastic housing (with Faraday attached) from the neck.



4. Remove the three screws in the base of the Faraday cage to separate the outer shell housing from the Faraday cage. **Note:** the cables would have been removed already.



Warning: Whenever the bottom housing is opened for service, you must do two things:

1. You must clean the original thermal film from all thermal interface mating surfaces, and reapply thermal paste to the mating surfaces on the thermal pipe.
2. You must tighten the four torx screws on the bottom housing to a minimum of 17 in.-lbs. Use a torque driver (service tool 076-0899) to ensure that the thermal pipe is firmly mated with the top base. If you do not have a torque driver, you must make sure the screws are tightened by hand **FIRMLY, BUT NOT FORCIBLY**.

Warning: Failure to follow these steps could cause the computer to overheat and damage internal components.

Refer to the topic “Thermal Paste Application” for detailed information.



Display, Flat Panel

Tools

This procedure requires the following tools:

- 1.5 mm hex tool
- Torx-10 screwdriver

Important: If you are replacing the display, be sure to install the new display shield and EMI gaskets that come with the new LCD panel. Installation instructions are included with the new display panel

Part Location



Preliminary Steps

Before you begin, do the following:

- Position the computer in the service stand.

Procedure

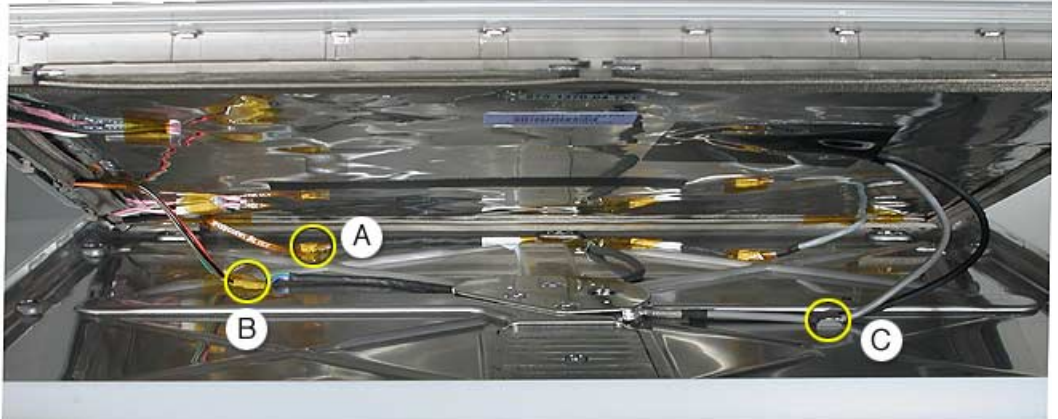
1. Remove three screws that connect the back cover to the flat panel LCD display.



-
2. Support the back cover and pull back the display (as shown) to separate it from the base.



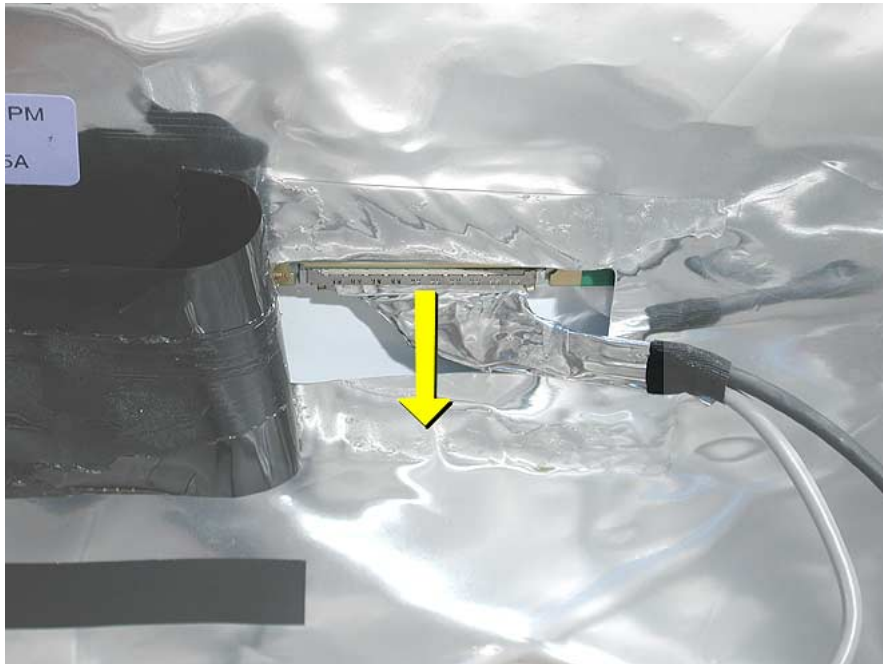
- Caution:** The power on LED cable (labelled A below) is fragile. When disconnecting display cables, be sure to raise the TOP SIDE of the display only. Carefully raise the TOP SIDE of the display and disconnect the inverter cable (B) and remove the TMDS cables (C) from the metal cable clip. **Note:** Enlarge the page to view the graphic at a larger size.



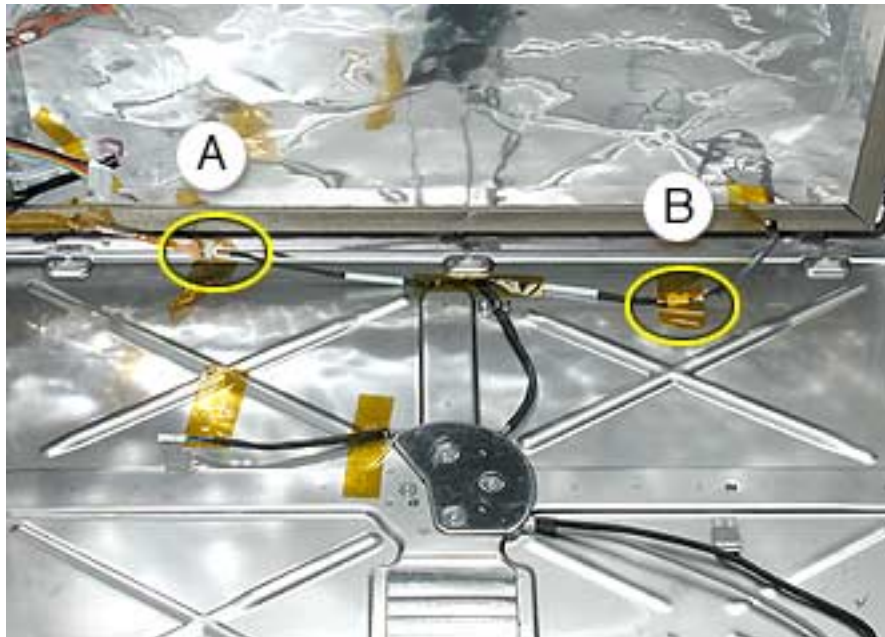
- Raise the display to access the TMDS connector. Peel back the black tape.



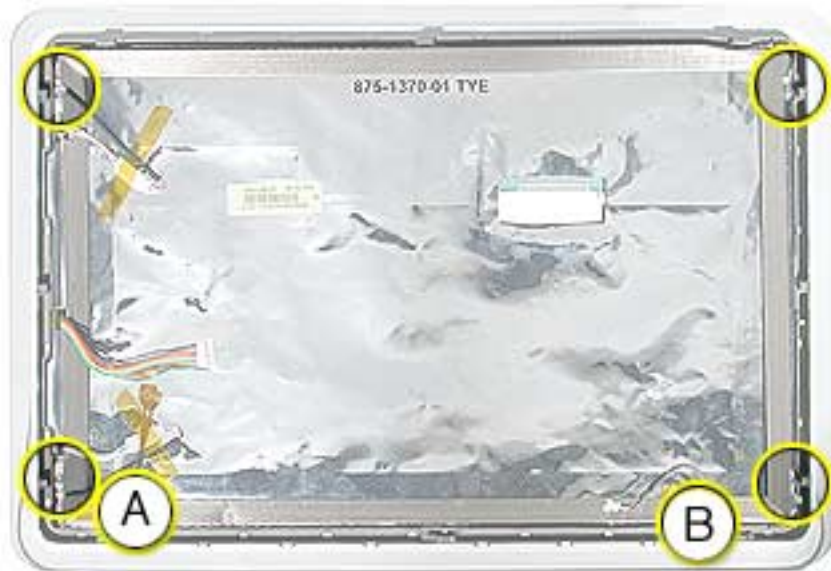
5. Disconnect the TMDS connector. **Note:** Enlarge the page to view the graphic at a larger size.



6. **Caution:** The power on LED cable (labelled A below) is fragile. Raise the top of the display to access the power on LED (A below) and microphone (B below) cables. Peel back the tape and disconnect the cables.



7. Remove four screws that connect the LCD display panel to the display bezel. Peel back the tape on the EMI shield to remove the LED (A) and microphone (B) cables from the display.



8. Remove the display from the bezel.
Replacement Note: If you are replacing the display, be sure to install the new display shield and EMI gaskets that come with the new LCD panel. Installation instructions are included with the new display panel.



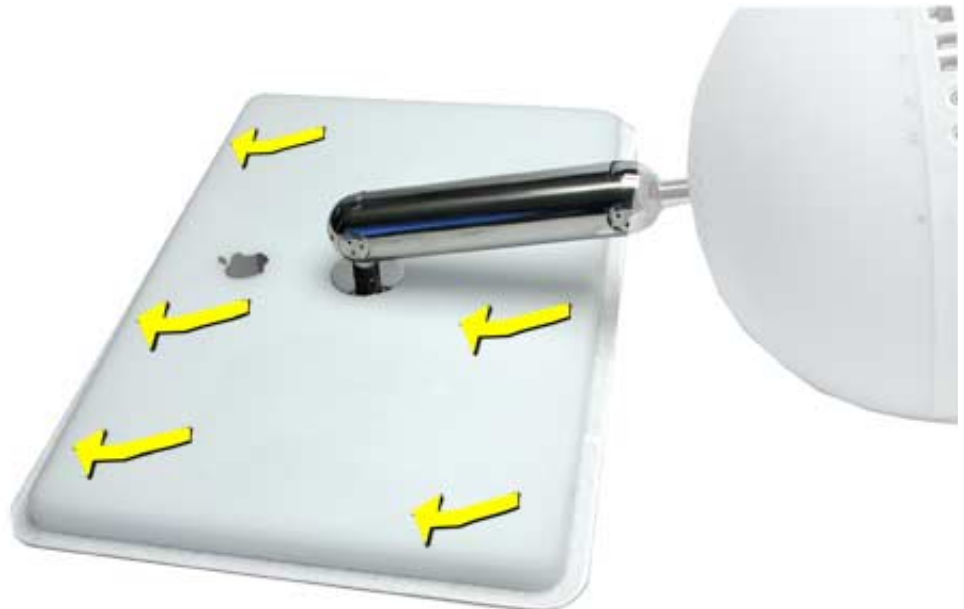
9. **Note:** Remove the inverter (refer to the next procedure) from the display if you are returning the flat panel display to Apple.

Replacing the Display

1. After connecting the display cables, position the display into the display's rear housing. Press the display into the housing in the direction of the arrow. **Note:** The display mates with tabs/slots in the rear housing. If the display doesn't fit properly and you can't install the three screws along the bottom of the housing, check that the display is properly seated in the rear housing.



2. Holding the display, turn it over and lay the display face down on a soft cloth. Push the rear housing in the direction of the arrow. This will mate the housing and display tabs.



3. Check the alignment of the rear housing and the flat panel display. If the display doesn't slide into the tabs/slots on the rear housing, a white line shows around the top of the rear housing (see below).



4. A properly installed display will have no white line showing across the back of the rear housing (see below), and the three display-to-housing screw holes align perfectly.





Inverter

Tools

This procedure requires no tools.

Part Location



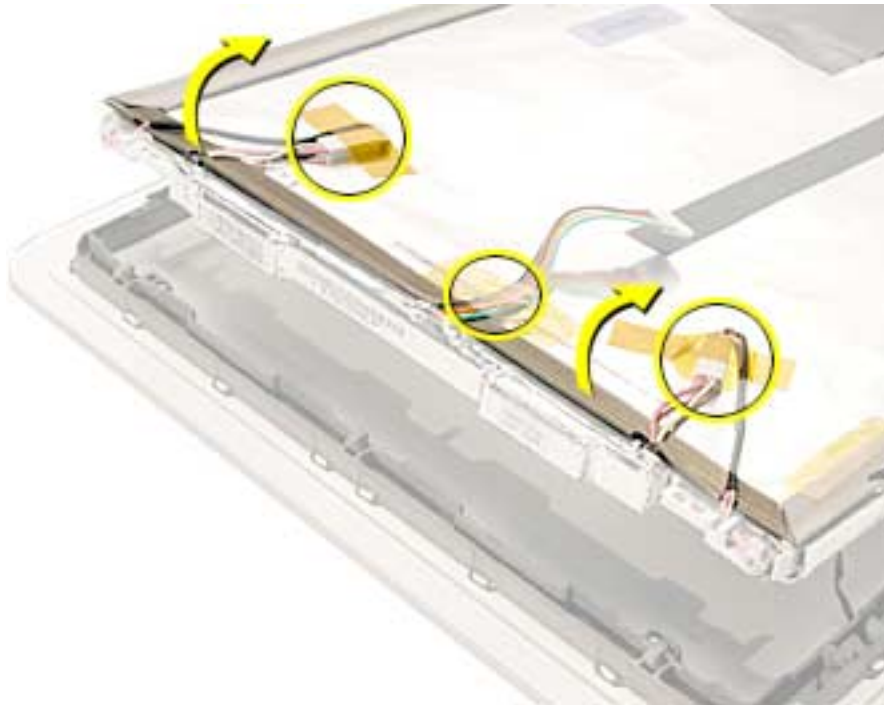
Preliminary Steps

Before you begin, do the following:

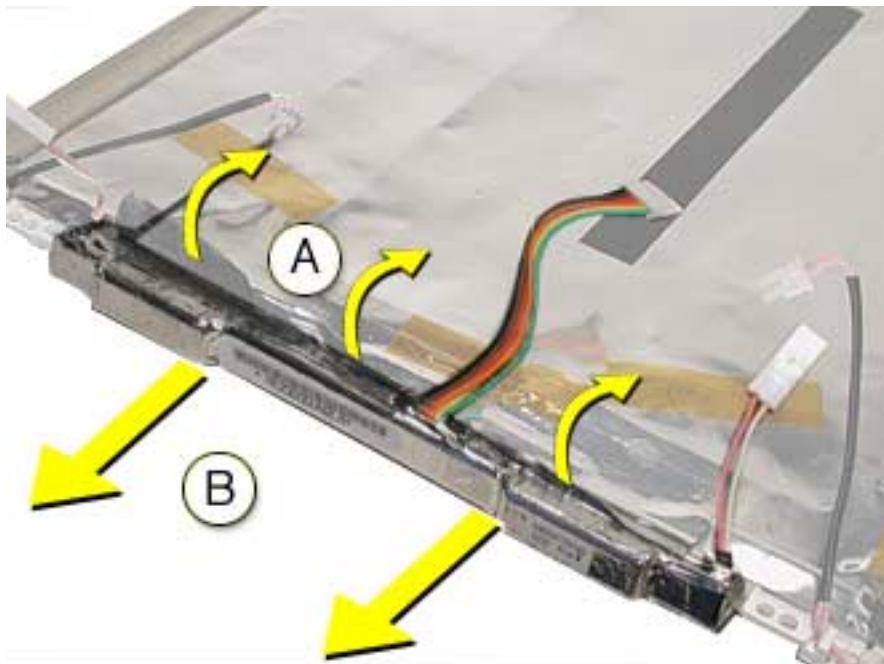
- Position the computer in the service stand.
- Remove the flat panel display.

Procedure

1. Remove the tape (circled below) and disconnect the cables. Peel back the edge of the EMI shield to access the foil on the inverter.



2. Peel the foil off the inverter (A). Pull the inverter off the edge of the display panel (B).



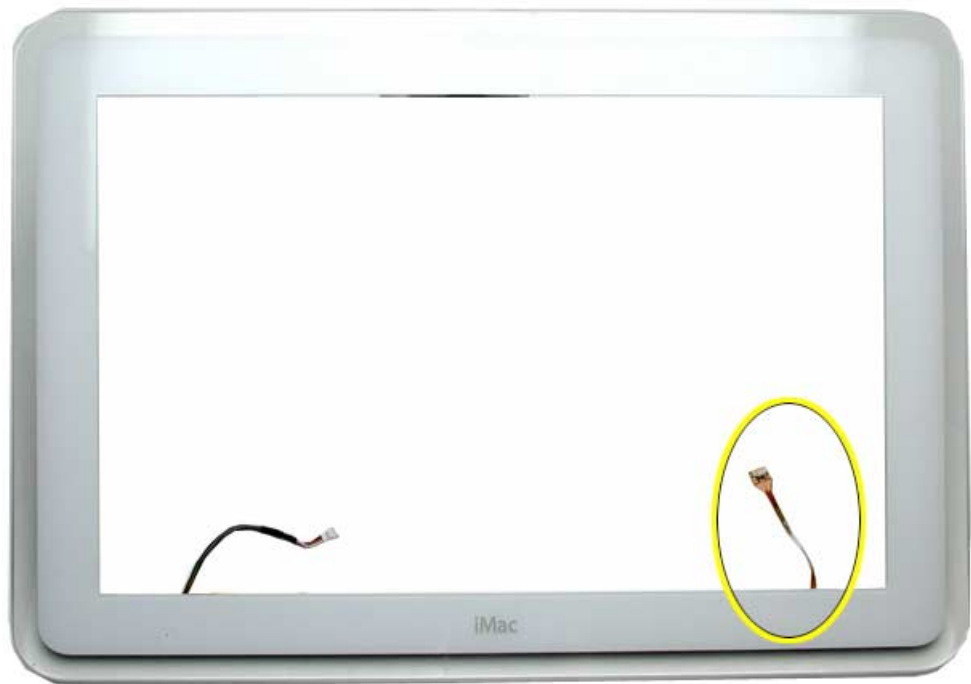


LED

Note: Do not remove the LED from the bezel. The LED is part of the display bezel (922-5297); it cannot be ordered separately.

Important: The LED does not light up when the power is on; however, the LED should pulse when the computer is in Sleep mode.

Part Location



Preliminary Steps

Before you begin, do the following:

- Remove the flat panel display.



Microphone

Note: Do not remove the microphone from the bezel. The microphone is part of the display bezel (922-5297); it cannot be ordered separately.

Part Location



Preliminary Steps

Before you begin, do the following:

- Remove the flat panel display.



Back Cover, Display

Tools

This procedure requires the following tools:

- Torx-10 screwdriver

Part Location



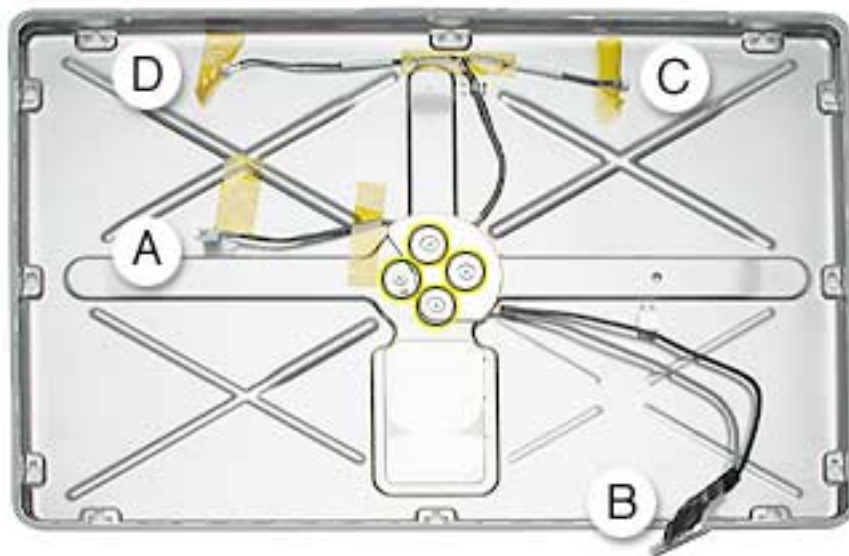
Preliminary Steps

Before you begin, do the following:

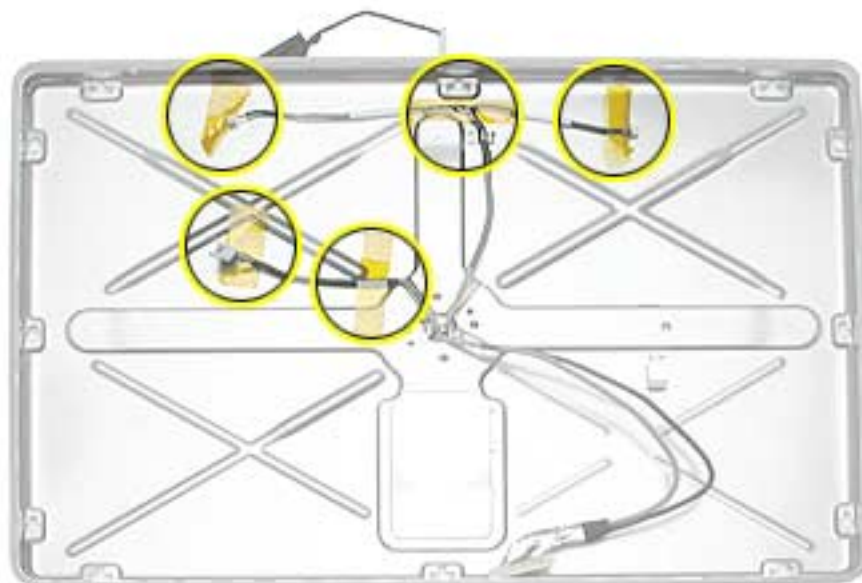
- Position the computer in the service stand.
- Remove the flat panel display.

Procedure

1. Note the position of the inverter (A), TMDS (B), microphone (C), and LED (D) cables. Remove four screws that secure the metal wire deflector and the base assembly to the back cover. Remove the wire deflector.



2. Remove tape from the neck cables and pull them through the hole in the back cover.
Note: The hole in the back cover is notched; align the wide TMDS connector with these notices to pull it through the back cover.





Neck Assembly

Tools

This procedure requires the following tools:

- Torx-10 screwdriver

Part Location



Preliminary Steps

Before you begin, do the following:

- Position the computer in the service stand.
- Remove the user access plate.
- Remove the bottom housing.
- Remove the drive carrier assembly.
- Remove the power supply.
- Remove the power supply insulators.
- Remove the fan.

-
- Remove the fan bracket.
 - Remove the neck spoke retainer cap.
 - Remove the blind mate connector screws.
 - Remove the Faraday cage.
 - Remove the outer plastic housing.
 - Remove the flat panel display.
 - Remove the back cover

Procedure

The neck assembly is attached to the computer base at one end and to the flat panel display at the other end. To remove the neck assembly from the computer, follow all the take-apart procedures. When you are finished, you will be left with the neck assembly shown below.





Troubleshooting
iMac (17-inch Flat Panel)



General Information

What's New and Different:

1. **Important:** If you are replacing the display, be sure to install the new display shield and EMI gaskets that come with the new LCD panel. Installation instructions are included with the new display panel. Additional display shields/gasket kits are also available separately as a kit, part #076-0958.
2. The LED and microphone are part of the display bezel (922-5297); they cannot be ordered separately.
3. The LED functions differently on the iMac (17-inch Flat Panel). The LED **does not** light up when the power is on; however, the LED should pulse when the computer is in Sleep mode.
4. Diagnostic test points have been added to the logic board. They are accessed through the user access door. Use the test points to check the following:
 - Battery
 - 5V
 - Main
 - 12V

For more information, refer to the “Logic Board Battery” and “No Power” topics later in this chapter.

5. **Important:** The CPU uses a thermal pipe to transfer heat away. This pipe makes a thermal connection to the top metal chassis (Faraday cage) at **two** locations. These connecting points must be cleaned and have new thermal paste applied each time the bottom housing is removed. If the mating surfaces are not cleaned and thermal paste is not used, the CPU may overheat and become damaged. There is no exception to this. **Note:** Most service procedures require that the bottom housing is removed.

Refer to “Thermal Paste Application” mentioned later in this chapter or in the Take Apart chapter.

6. The procedures for removing and replacing the display panel and the inverter board are new and different. Refer to the Take Apart chapter for additional information. **Important:** Whenever the LCD display (661-2715) is replaced, a display shield/gasket kit (076-0958) must be installed on the new panel. Instructions for installing the shield/gasket kit are included with the new LCD panel.
7. The AirPort antenna cable is no longer bundled in the neck assembly. The antenna is now clipped to the outside of the Faraday cage. Refer to the Take Apart chapter for additional information.

Important Things to Remember:

Service items that still apply to all flat-panel iMac computers:

1. **Important:** Whenever the logic board is separated from the bottom housing, you must install new thermal pads to three surfaces on the bottom housing. The thermal pads help cool components on the logic board. Failure to apply these pads whenever the logic board is separated from the bottom housing

could cause these parts to overheat. Short term separation, where the thermal pads are not handled excessively (an exception would be if you are simply testing the logic board and only detach it for a few minutes), does not require replacement. Refer to “Thermal Pad Installation” in this chapter for detailed information.

Refer to the Take Apart chapter, “Thermal Pad Installation.”

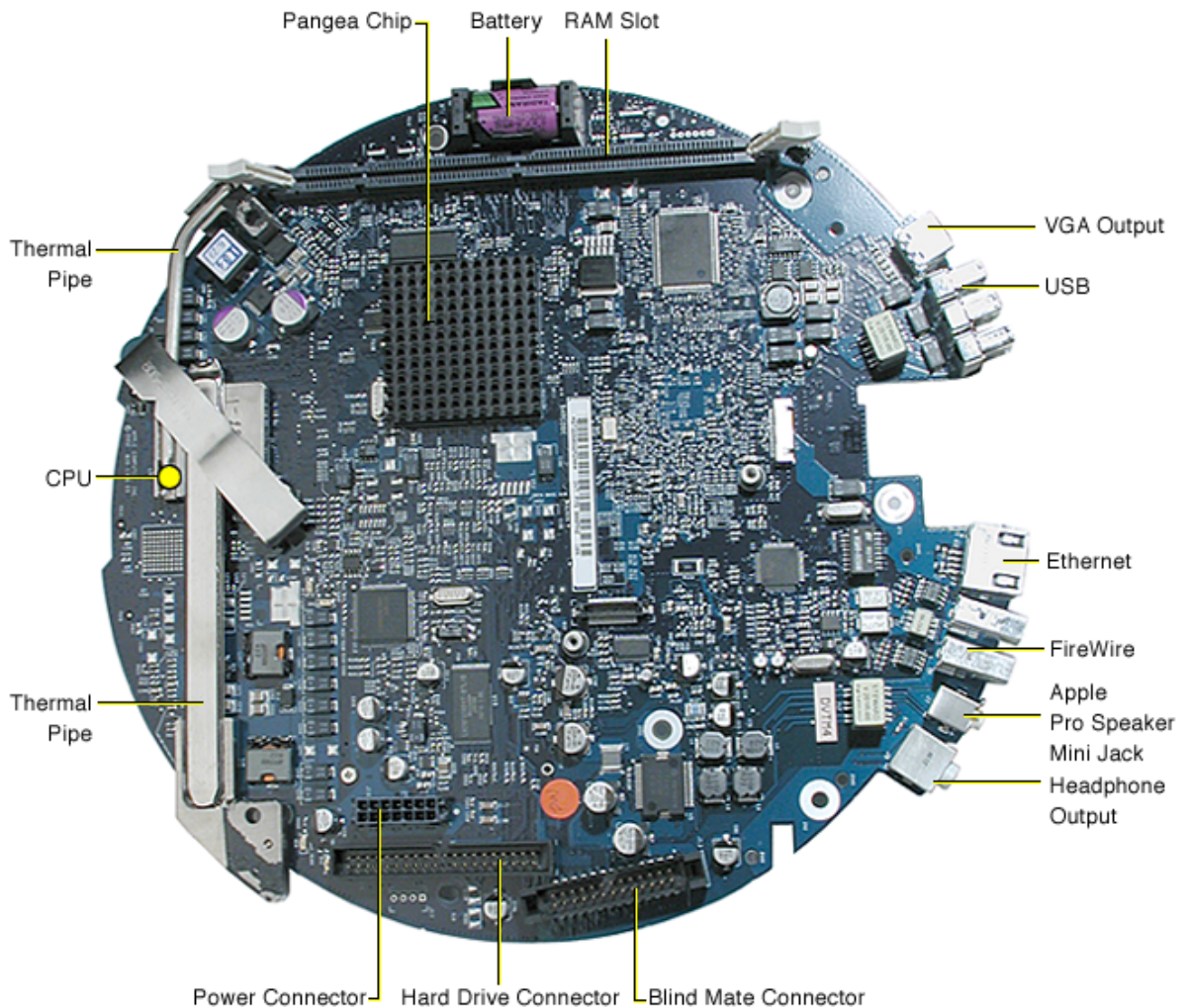
2. Whenever the bottom housing is opened for service, you must do two things:
 1. You must clean the original thermal film from the surfaces joining the thermal interface layer and reapply thermal paste to the thermal pipe.
 2. You must tighten the four torx screws on the bottom housing to a minimum of 17 in.-lbs. If you do not have a torque driver, you will have to make sure these screws are tightened by hand **FIRMLY, BUT NOT FORCIBLY**. Or, purchase the service tool (076-0899) in order to ensure the thermal pipe is firmly mated with the top base. If the bottom housing is not securely attached to the base in this fashion, the CPU may overheat and become damaged. Failure to follow either of these steps could cause the computer to overheat and damage internal components.

Refer to the topic, “Thermal Paste Application” for detailed information.

3. Special service tools are required to perform some procedures. A service stand, 076-0898, to hold the unit during take apart, and service cables, 076-0897, that allow the unit to be powered on while the bottom housing is open. **Important:** The unit should not be powered on for more than five minutes with the bottom housing open. If it is open longer, the CPU may overheat and become damaged.

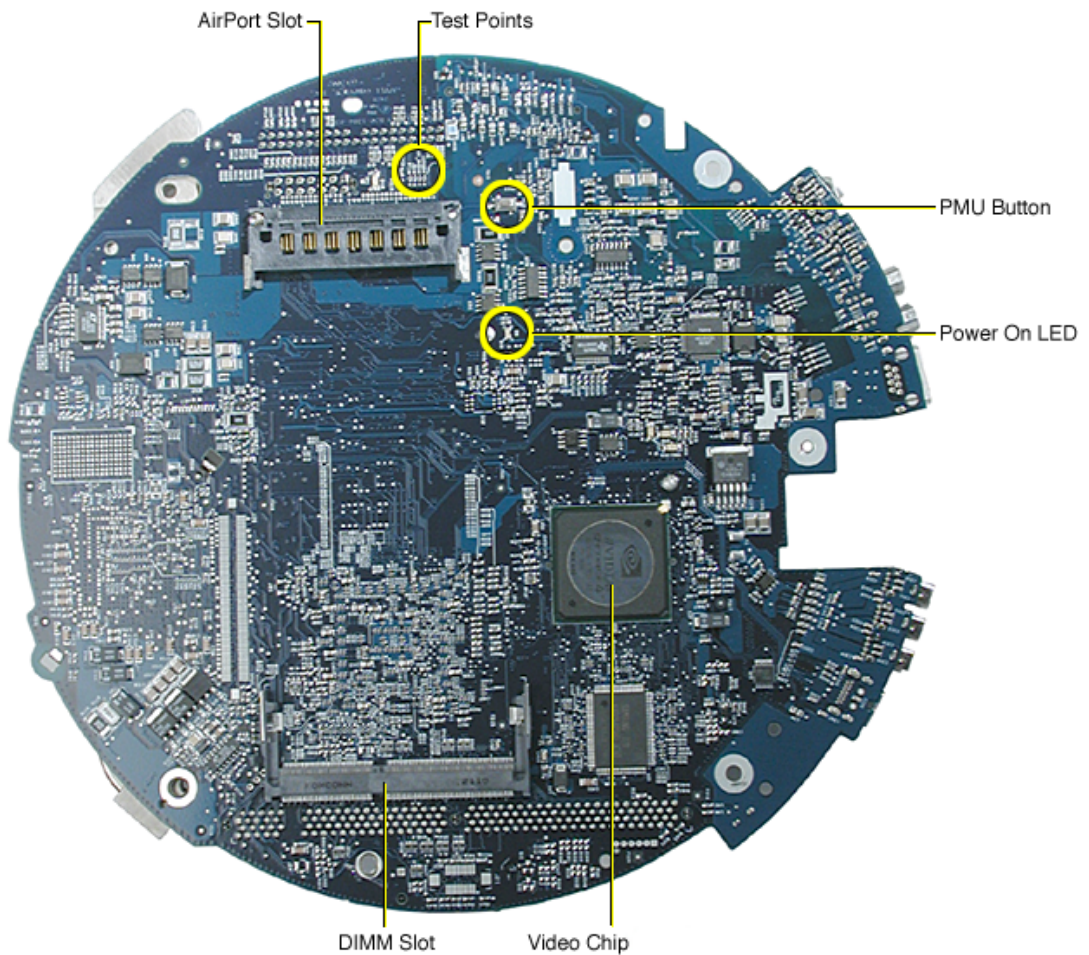
Logic Board, Top

Note: Enlarge the page to view the graphic at a larger size.

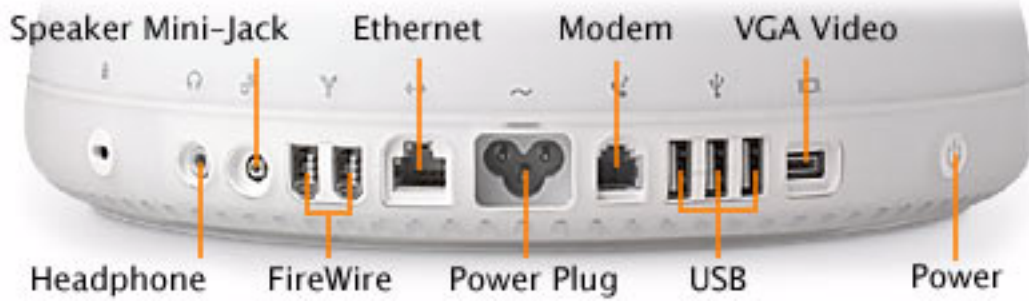


Logic Board, Bottom

Note: Enlarge the page to view the graphic at a larger size.



I/O Ports



Service Cables

Three extension cables (076-0897) are required when troubleshooting the iMac with the bottom housing open, as shown below. **Important:** Diagnostic service cables allow the unit to run while the bottom housing is open; however, the computer cannot run for more than five minutes with the bottom housing open. If it is open longer, the CPU may overheat and become damaged.

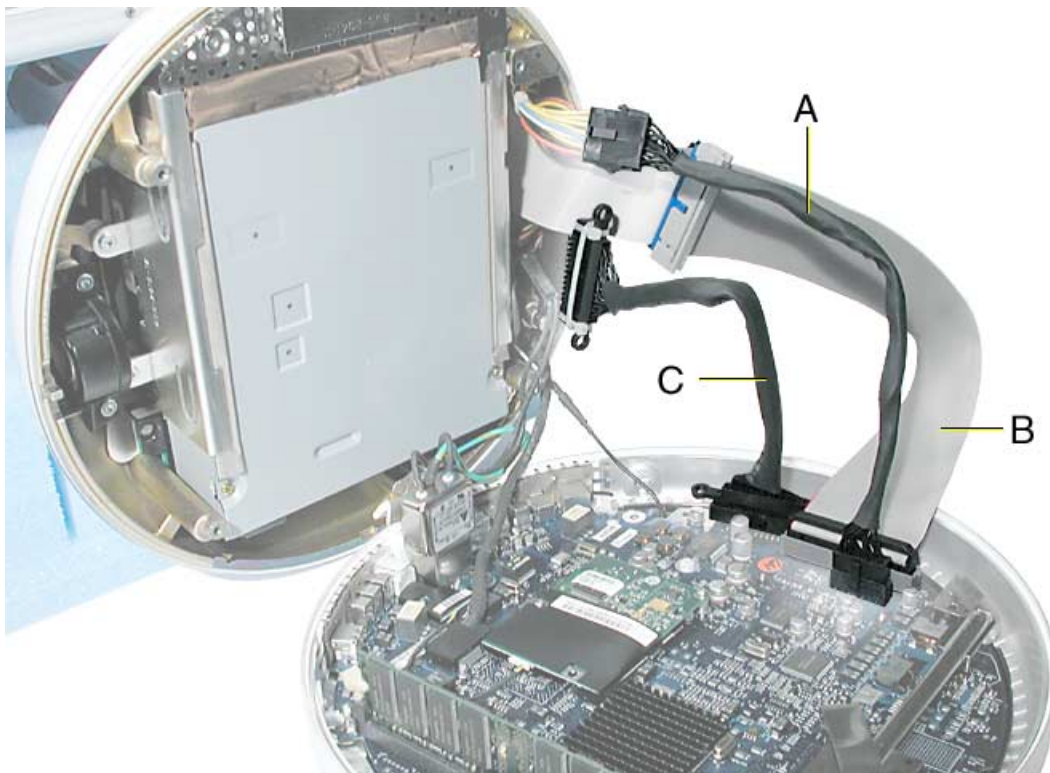
Connect the cables as shown below.

A= power cable

B= drive data cable

C= blind mate connector

Note: Enlarge the page to view the graphic at a larger size.



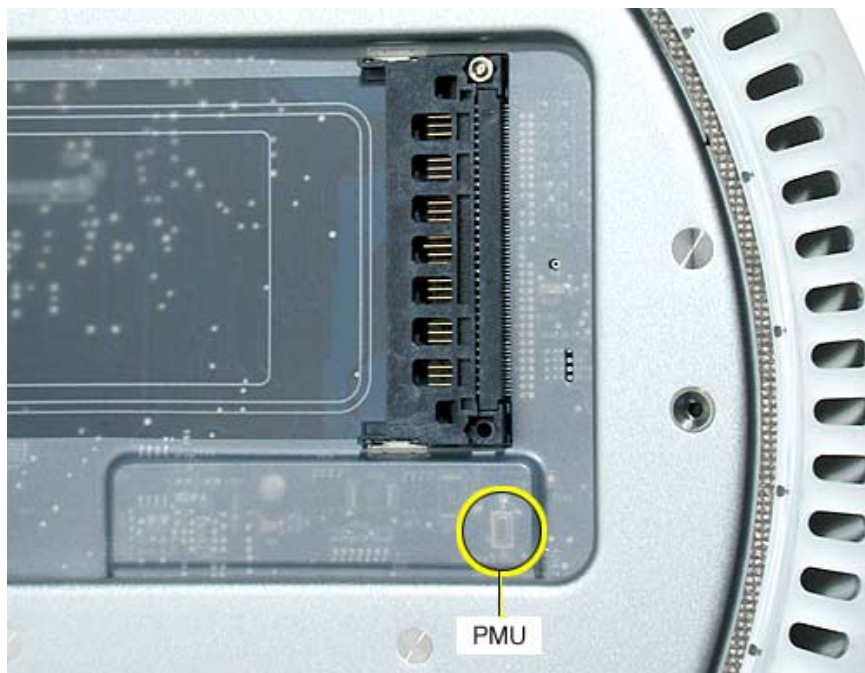
The PMU Chip

The PMU (Power Management Unit) is a microcontroller chip that controls all power functions for the computer. The PMU (location shown below) is a computer within a computer. It has memory, software, firmware, I/O, two crystals, and a CPU. Its function is to:

- Tell the computer to turn on, turn off, sleep, wake, idle, etc.
- Manage system resets from various commands.
- Maintain parameter RAM (PRAM).
- Manage the real-time clock.

Important: The PMU is **very** sensitive and touching the circuitry on the logic board can cause the PMU to crash. If the PMU crashes, the battery life goes from about five years to about two days if the PMU is not reset. Refer to the next topic, “Resetting the PMU on the Logic Board” for the procedure.

Many system problems can be resolved by resetting the PMU chip. The PMU reset button is located on the right side of the board, refer to the picture below.

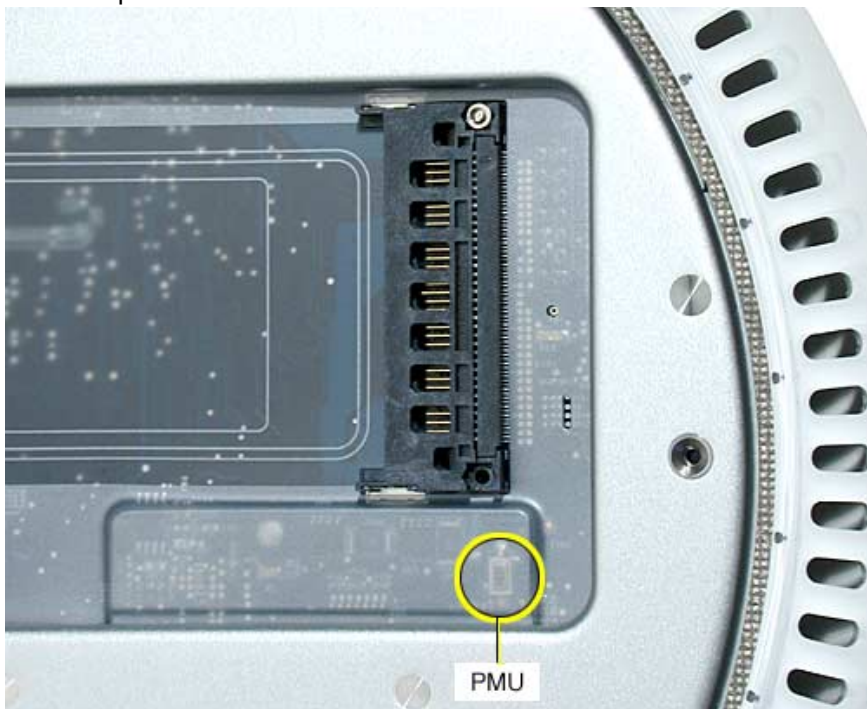


Location of the PMU Button

Resetting the PMU on the Logic Board

Resetting the PMU (Power Management Unit) on the logic board can resolve many system problems. Whenever you have a unit that fails to power up, you should follow this procedure before replacing any modules.

1. Disconnect the power cord.
2. Remove the user access panel from the bottom of the computer.
3. Press the PMU reset switch (shown below) once on the bottom side of the logic board and then proceed to step 3. Do **NOT** press the PMU reset switch a second time because it could crash the PMU chip.

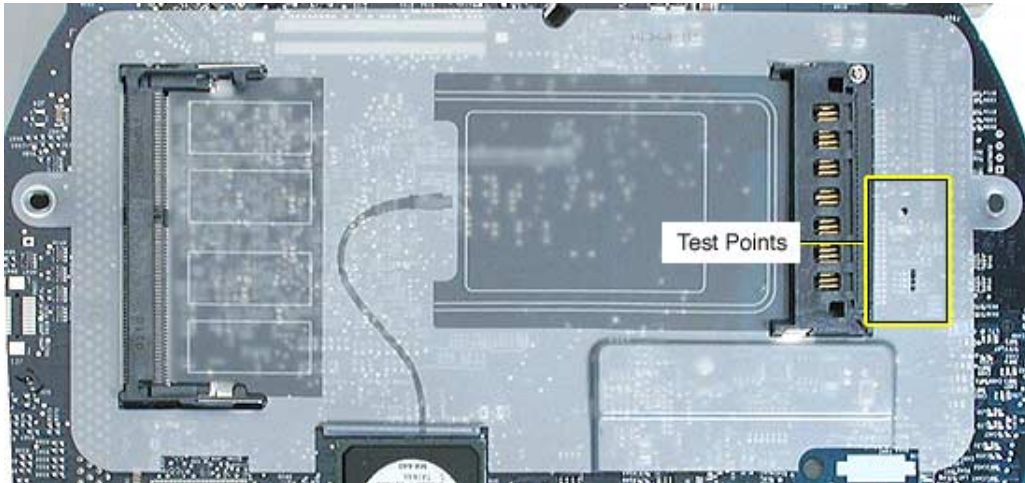


4. WAIT ten seconds before connecting the power cord and powering the computer on. If the computer powers on, go to the next step. If the computer does not power on, there is something else wrong with the computer, refer to the symptom/cure, “No Power” in this chapter.
5. Run MacTest Pro and return the computer to the customer.

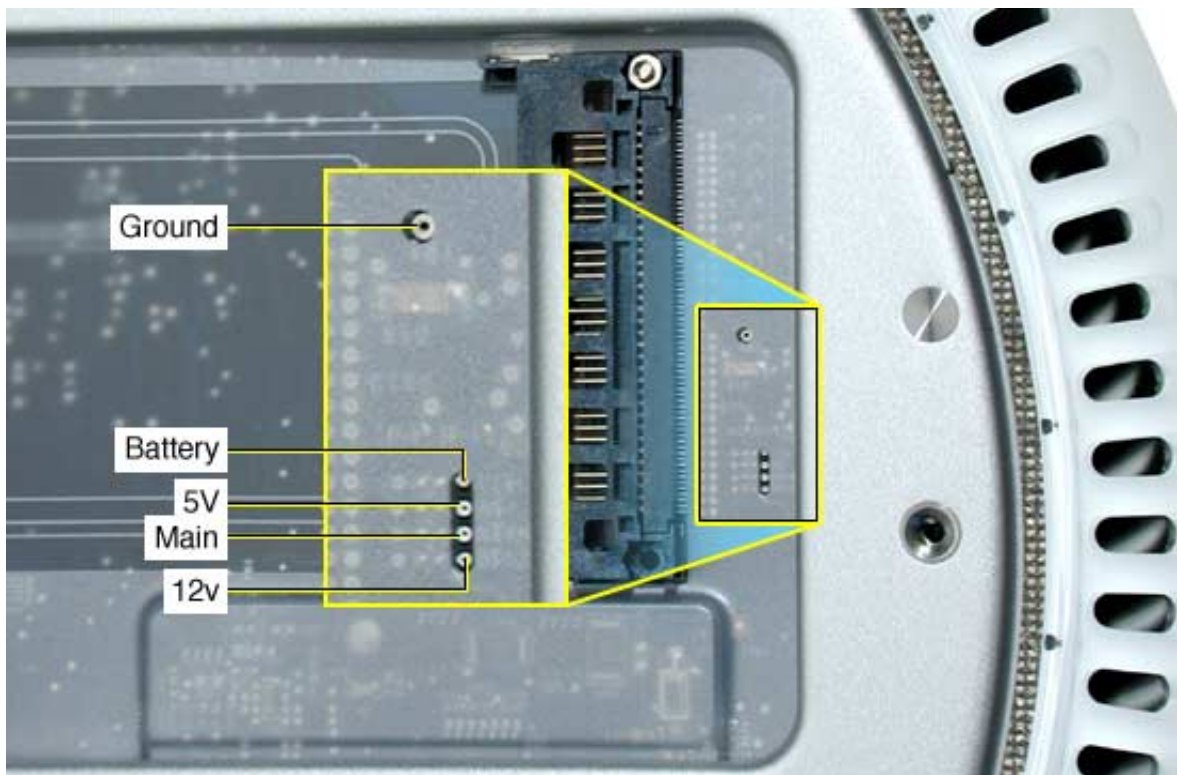
Note: This entire procedure resets the computer’s PRAM. Be sure to reset the computer’s time, date and other system parameter settings before returning the computer to the customer.

Diagnostic Test Points

The iMac (17-inch Flat Panel) has four test points and one ground pad on the bottom of the logic board. These test points are accessible under the customer access panel via two small cutouts in the plastic shielding (see below).



These test points provide an easy troubleshooting tool for common problems. To use each test point, put the positive probe of your voltmeter on the test point, and the negative probe on the ground pad.



Logic Board Battery

Important: Apple highly recommends removing the battery when handling the logic board. Make sure to use proper ESD protection when handling modules.

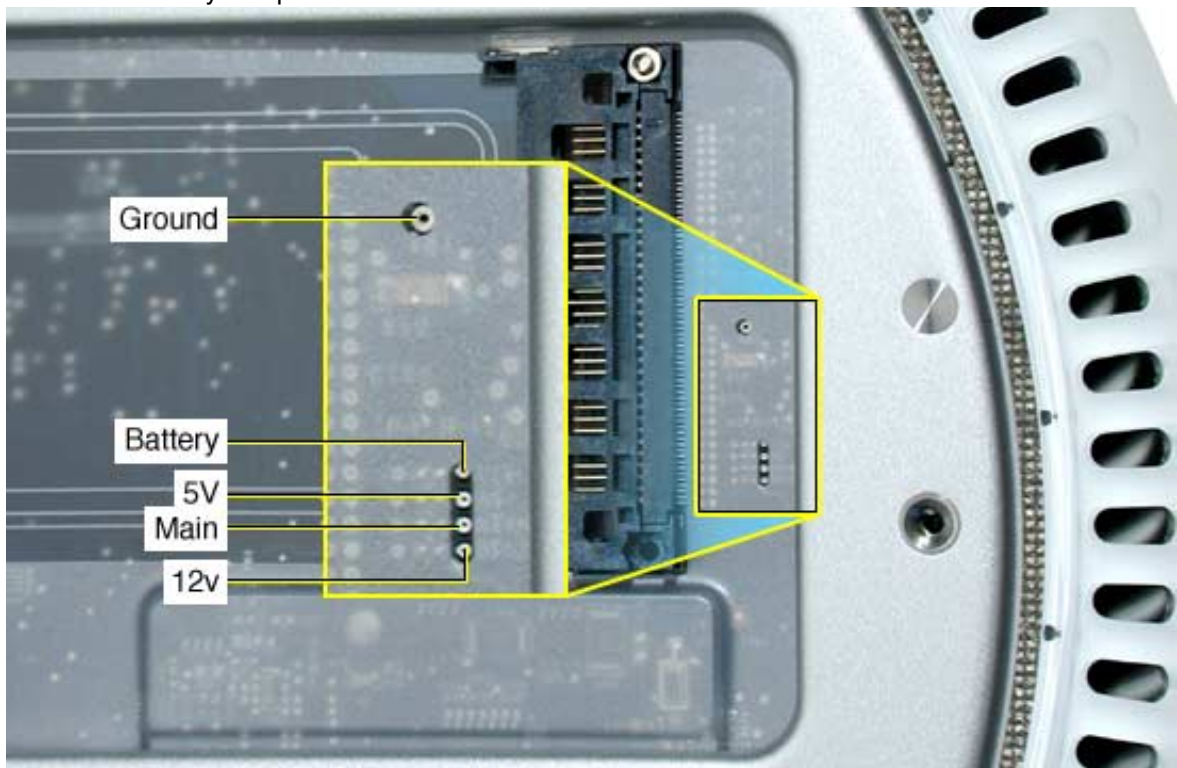
The battery on the logic board controls the stored system settings, such as date and time. It is only necessary to test the battery when you can't power on the computer, or the date and time are reset every time the AC power is removed.

The battery is also used to power the PMU chip (because the PMU chip keeps time and must always be running) when the computer is unplugged from the wall (AC power). The PMU is **very** sensitive and touching any circuitry that is connected to the PMU can cause it to crash. If the PMU crashes, the battery life goes from about five years to about two days if the PMU is not reset. Once the battery goes dead, the PMU will reset the time and date every time the AC power is removed. To fix this situation, replace the battery and reset the PMU (refer to "Resetting the PMU on the Logic Board" mentioned earlier in this chapter).

If the computer has a "No Power" situation, check the battery before replacing modules.

Testing the Battery

1. Remove the user access door on the bottom of the computer.
2. Locate the battery test point.



3. With the computer powered off, measure the battery voltage. Does the battery measure at least +3.5v? If no, replace the battery and reset the PMU. If the battery measures +3.5v or higher, reinstall the battery and reset the PMU as above.

4. Connect the power cord and power up the system again.

Warning: Whenever the bottom housing is opened for service, you must do two things:

1. You must clean and reapply thermal paste to the thermal pipe surface.
2. You must tighten the four torx bolts on the base unit to a minimum of 17 in.– lbs. Failure to follow either of these steps could cause the computer to overheat and damage internal components.

Refer to the next topic, “Thermal Paste Application” for detailed information.

Thermal Paste Application

The following instructions explain how to apply thermal paste to the thermal pipe in the iMac (17-inch Flat Panel) computer. Failure to follow these instructions could cause the computer to overheat and damage internal components.

Tools

This procedure requires the following tools:

- Plastic stylus or plastic spatula to remove the old thermal paste
- Plastic stylus or plastic spatula to spread the thermal paste
- Thermal paste (922-4757)

Paste Location

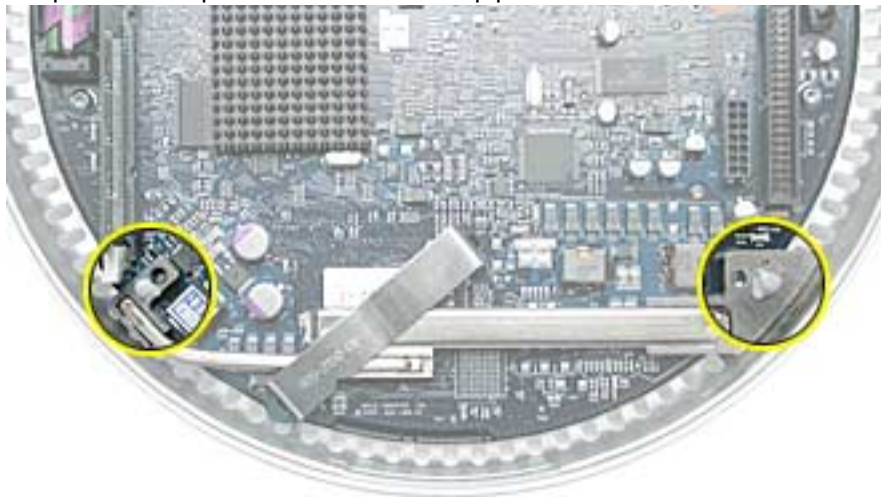


Procedure

1. Thoroughly clean the original thermal film from the four mating surfaces circled below. Use a plastic stylus to scrape the surfaces clean. **Note:** Do not use an abrasive material or liquid cleaner.



2. Squeeze a drop of thermal paste onto the thermal pipe locations circled below.



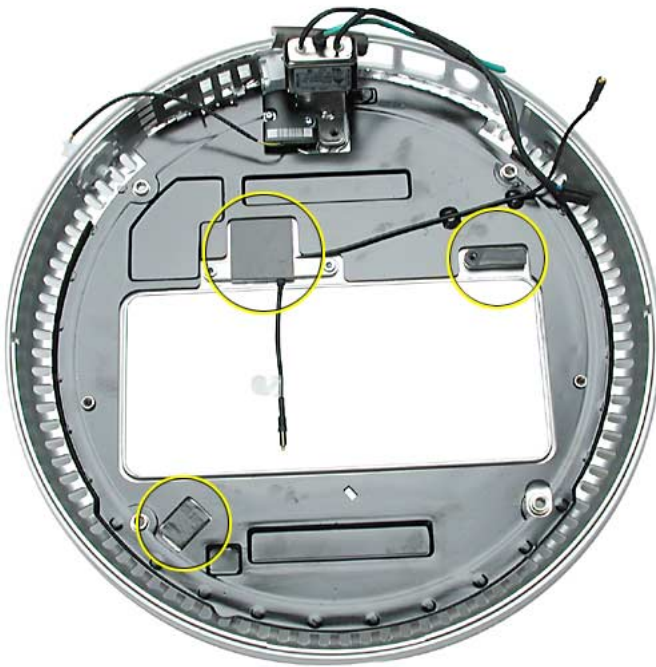
3. Close the bottom housing.
Warning: The bottom housing has four torx screws that must be tightened to at least 17 in.-lbs. If you do not have a torque driver, you will have to make sure these screws are tightened by hand **FIRMLY, BUT NOT FORCIBLY**. Or, purchase the service tool (076-0899) in order to ensure the thermal pipe is firmly mated with the top base. If the bottom housing is not securely attached to the base in this fashion, the CPU may overheat and become damaged.

Thermal Pad Replacement Instructions

Whenever the logic board is separated from the bottom housing, you must install new thermal pads to three surfaces on the bottom housing. The thermal pads help cool components on the logic board. Failure to apply these pads whenever the logic board is separated from the bottom housing could cause these parts to overheat. Short term separation, where the thermal pads are not handled excessively (an exception would be if you are simply testing the logic board and only detach it for a few minutes), does not require replacement.

Procedure

1. Remove the old thermal pads (circled below) from the bottom housing. Thoroughly clean the bottom housing surfaces after removing the pads. **Note:** If you don't see all three thermal pads on the bottom housing, check the bottom side of the logic board.



2. Using the thermal pad kit, remove the clear protective backing from the new thermal pads.
3. Place the new thermal pads in the bottom housing. **Note:** Avoid unnecessary contact with either side of the thermal pad as dirt and body oils reduce the thermal pad's conductivity.
4. Press down on the blue protective backing to make sure each thermal pad has even contact with the bottom housing. There should be no air pockets.
5. Remove the blue protective backing from the new thermal pads.
6. Replace the logic board. Holding the logic board by the battery retainer and the internal drive cable connector, slide the logic board back into the bottom housing (make sure the I/O port covers are on the logic board).



Symptom Charts

How to Use the Symptom Charts

The Symptom Charts included in this chapter will help you diagnose specific symptoms related to the product. Because cures are listed on the charts in the order of most likely solution, try the cures in the order presented. Verify whether or not the product continues to exhibit the symptom. If the symptom persists, try the next cure.

Note: If you have replaced a module, reinstall the original module before you proceed to the next cure.

Apple Hardware Test

Apple Hardware Test is a diagnostic tool for detecting problems with Apple internal hardware components such as logic board, memory, modem, video RAM, and Apple AirPort Card. The test does not check externally connected hardware components such as USB or FireWire devices; it also does not check non-Apple devices such as third-party PCI cards.

Note: The most recent Apple Hardware Test software can be downloaded from the CD Images page on AppleCare Service Source; go to the Service Source home page and select 'Disc Images' from the quick-click table.

Error Codes

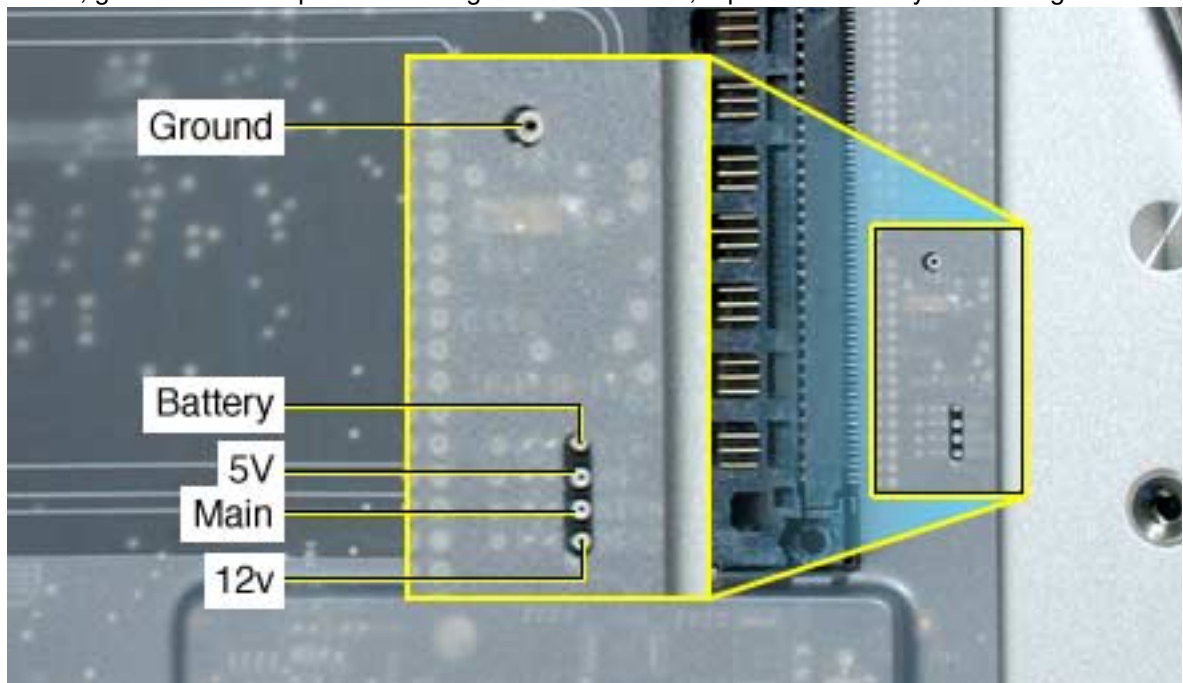
If Apple Hardware Test detects a problem with a computer, it displays an error code, which is defined in the product's Error Code List. Consult the list for appropriate repair procedures associated with the code.

All Error Code Lists are included in the Service Diagnostics Matrix, Knowledge Base article 112125. You can also access this matrix by clicking the Service Diagnostics rollover link under any of the product areas on the Service Source home page.

No Power

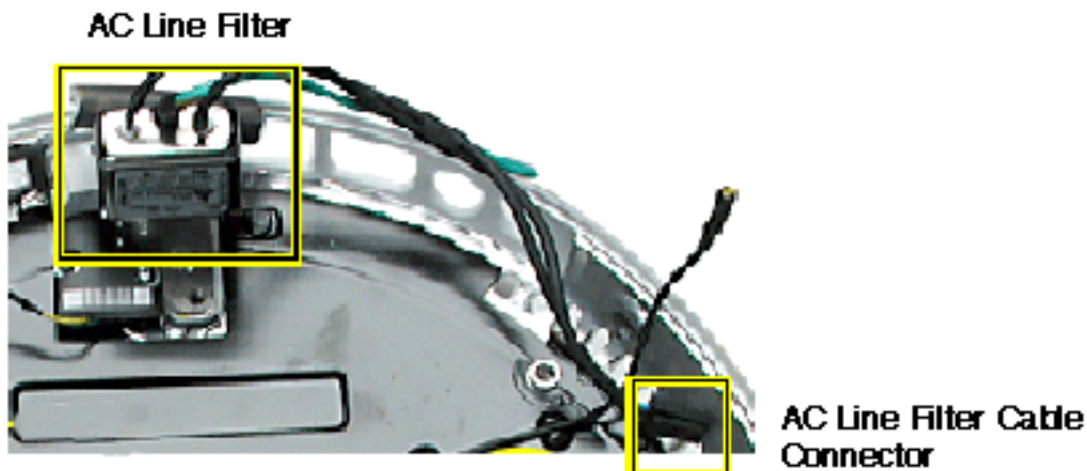
No fan, no hard drive noise, and the screen is black.

1. Verify the power outlet is good. Plug a different device into the socket to ensure there is power, or plug computer into another outlet.
2. Check the power cord. Use a known good power cord.
3. Check connection of the power cord on both ends. Verify that the plug is securely plugged into both the A/C outlet and back of the computer.
4. Remove keyboard, mouse, and other peripherals such as speakers.
5. Disconnect the power cord, place the computer in the service stand, and remove the user access plate.
6. Reset PMU. Refer to “Resetting the PMU on the Logic Board” mentioned earlier in this chapter.
7. Using a voltmeter, check the voltage on the battery test point (see graphic below). If the reading is over 3.5 volts, go to the next step. If the reading is under 3.5 volts, replace the battery and test again.



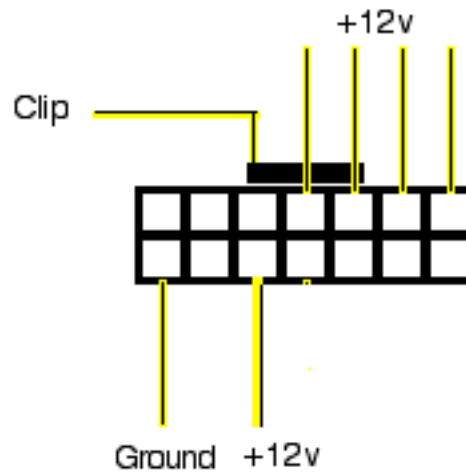
8. Plug the unit in, but do **NOT** press the power button. Using a voltmeter, check the voltage from the test point marked “Main” (see graphic above). You should get a reading of approximately 12 volts. If the reading is 12 volts, go to the next step. If you don’t get a 12 volt reading, verify that all the cables are securely connected and test the unit again. Pay special attention to the video cable.
9. Press the power switch on the computer. Using a voltmeter, check the voltage on the test point marked “12v” (see graphic above). You should get a reading of approximately 12 volts. If the reading is 12 volts, go to the next step. If you do not get a 12 volt reading, replace the main logic board.
10. Using a voltmeter, check the voltage on the test point marked “5v” (see graphic above). You should get a reading of approximately 5 volts. If the reading is 5 volts, go to the next step. If you do not get a 5 volt reading, replace the main logic board.

11. Remove the bottom housing. **Warning:** Whenever the bottom housing is opened for service, you must do two things:
 - You must clean the original thermal film from the surfaces joining the thermal interface layer and reapply thermal paste to the thermal pipe.
 - The bottom housing has four torx screws that must be tightened to at least 17 in.-lbs. If you do not have a torque driver, you will have to make sure these screws are tightened by hand FIRMLY, BUT NOT FORCIBLY. Or, purchase the service tool (076-0899) in order to ensure the thermal pipe is firmly mated with the top base. If the bottom housing is not securely attached to the base in this fashion, the CPU may overheat and become damaged.
12. Check the AC line filter. To measure power at the AC line filter cable, disconnect the AC line filter cable from the power supply cable. Switch your multimeter to read AC voltage. Touch the black probe to the pin of the brown wire, and touch the red probe to the pin of the blue wire (see graphic below). Do you measure 120v (line voltage)? If yes, reconnect the AC line filter and go on to the next step. If no, replace the AC Line Filter.



13. Connect the diagnostic cables (part 076-0897) between the upper housing components and the logic board. Refer to “Service Cables” mentioned earlier in this chapter.
14. Check the connection of the video cable on the LCD flat panel, and try to power on the unit again. If you still have no power, go on to the next step.

-
15. Check power supply output. Disconnect the diagnostic power cable from the power supply connector, and measure power at the power supply connector by touching the black probe to the ground pin, and using the red probe to measure power at the pins indicated in the graphic below. Did you measure +12v at each point? If yes, replace the logic board. If no, replace the power supply.

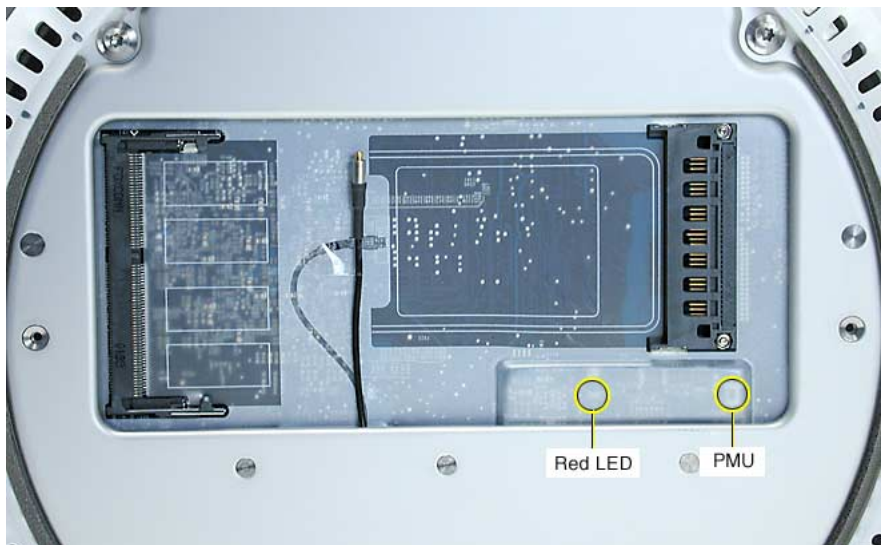


16. Replace the inverter board.
17. Replace the neck assembly.

No Video

Screen is dark, fan is running and the hard drive is spinning. You may hear the startup chime as well.

1. Reset parameter RAM. Press Command-Option-P-R during startup before “Welcome to Macintosh” appears.
2. The system software could be damaged. Start up from the system CD that came with the computer.
3. Remove the user access panel. With the unit powered on, check if a red LED (shown below) is visible in the access door. If the red LED is on, power is on. If you don't see the LED glowing red, follow the steps under the symptom “No Power”.



4. Disconnect the A/C power cord. Place the unit in the service stand and remove the user access plate. Press the PMU reset button on the logic board. Refer to “Resetting the PMU on the Logic Board” mentioned earlier in this chapter.
5. Check for external video. Connect an external monitor to the mini-VGA port. If you don't have external video, replace the main logic board. If you do have external video, go on to the next step.
6. Open the bottom housing and verify that all the cables are securely attached. Pay special attention to the video cable (located near the modem). If the cables are securely attached, go on to the next step.
Warning: Whenever the bottom housing is opened for service, you must do two things:
 - You must clean the original thermal film from the surfaces joining the thermal interface layer and reapply thermal paste to the thermal pipe.
 - The bottom housing has four torx screws that must be tightened to at least 17 in.-lbs. If you do not have a torque driver, you will have to make sure these screws are tightened by hand **FIRMLY, BUT NOT FORCIBLY**. Or, purchase the service tool (076-0899) in order to ensure the thermal pipe is firmly mated with the top base. If the bottom housing is not securely attached to the base in this fashion, the CPU may overheat and become damaged.
7. Check the connection of the video cable to the LCD flat panel display (under black tape).

-
8. Replace the inverter board.
 9. Replace the LCD display. **Important:** If you are replacing the display, be sure to install the new display shield and EMI gaskets that come with the new LCD panel. Installation instructions are included with the new display panel. Additional display shields/gasket kits are also available separately as a kit, part #076-0958.
 10. Replace the neck assembly
 11. Replace the logic board.
 12. Replace the power supply board.

No LED

LED on the display bezel does not light up

Note: The LED does not light up when the power is on; however, the LED should pulse when the computer is in Sleep mode.

1. Put the computer into Sleep mode. Does the LED pulse now? If yes, there is nothing wrong with the LED. If no, replace the display bezel (922-5297) shown below. The LED is attached to the display bezel and cannot be ordered separately.



Display

LED on the display bezel does not light up

Note: The LED does not light up when the power is on; however, the LED should pulse when the computer is in Sleep mode.

1. Put the computer into Sleep mode. Does the LED pulse now? If yes, there is nothing wrong with the LED. If no, replace the display bezel (922-5297). The LED is attached to the display bezel and cannot be ordered separately.

Screen tilts to the left or the right even after a manual adjustment.

Note: It is normal for the screen on an iMac (Flat Panel) to have a small amount of horizontal play. However, the screen should be able to be adjusted so that it will stay in a level horizontal position.

1. Remove ten screws connecting the back cover to the flat panel LCD display (refer to the Take Apart chapter, display topic).
2. Disconnect the panel cables to gain access the three screws on the metal cable retainer shown below. Remove the screws and lift the cable retainer off the panel shield.



3. Loosen the four screws (shown below) that hold the panel shield to the neck assembly, and tilt the screen the opposite direction of the tilt.



4. While holding the display bezel in this position, tighten the same four screws that hold the panel shield to the neck assembly.
5. Replace the panel and check that the display is now horizontally level. **Important:** If you are replacing the display, be sure to install the new display shield and EMI gaskets that come with the new LCD panel. Installation instructions are included with the new display panel. Additional display shields/gasket kits are also available separately as a kit, part #076-0958.

When displaying a single color over the screen area, the LCD panel shows one or more pixels that are not properly lit

Active-matrix LCD technology uses rows and columns of addressable locations (pixels) that render text and images on screen. Each pixel location has three separate subpixels (red, green, and blue) that allow the image to be rendered in full color. Each subpixel has a corresponding transistor responsible for turning the subpixel on or off.

There are typically millions of these subpixels on an LCD display. For example, the LCD panel used in the Apple Cinema HD display is made up of 2.3 million pixels and 6.9 million red, green, and blue subpixels. Occasionally, a transistor does not work perfectly, which may result in the affected subpixel being turned on (bright) or turned off (dark). With the millions of subpixels on a display, it is quite possible to have a low number of faulty transistors on an LCD. Therefore, a certain number of subpixel anomalies is considered acceptable. Rejecting all but perfect LCD panels would significantly increase the retail price for products using LCD displays. These factors apply to all manufacturers using LCD technology—not just Apple products.

To determine whether or not the display has an acceptable number of pixel anomalies, follow the steps below:

1. Set the display image to one of the following colors: all-white display, all-red display, all-green display, or all-blue display.
2. Using a jeweler's loupe, pocket microscope, or other magnifying device, identify and count each subpixel anomaly:
 - Bright subpixel anomaly = subpixel that is always on
 - Dark subpixel anomaly = subpixel that is always off
3. **Important:** Check the number of subpixel anomalies with the following chart:

LCD Size (inches)	Acceptable Number of Subpixel Anomalies			Replace the Display		
	Bright	Dark	Combination	Bright	Dark	Combination
17	up to 4	up to 6	up to 8	5 or more	7 or more	9 or more

4. If the number of subpixel anomalies exceeds the acceptable number listed in the chart, replace the LCD panel.
5. If the number of subpixel anomalies is acceptable, explain to the customer that the pixel anomalies are within specifications, and no repair is necessary.

Important: Do not release the specifications to customers. Instead, inform them that a certain number of subpixel anomalies is considered acceptable, and these factors apply to all manufacturers using LCD technology—not just Apple products.

Hard Drive

Hard Drive won't mount to the desktop

1. Disconnect any connected peripherals.
2. Boot from the system CD that came with the computer and see if the hard drive mounts on the desktop.
3. Launch Drive Setup and update the hard drive driver.
4. If no hard drive is found in Drive Setup, verify the hard drive cable connections.
5. Replace the hard drive cable.
6. Replace the hard drive.
7. Replace the logic board.

Flashing question mark appears on the screen

1. Boot from the system CD that came with the computer and see if the hard drive mounts on the desktop.
2. Launch Drive Setup and update the hard drive driver.
3. If no hard drive is found in Drive Setup, verify the hard drive cable connections.
4. Replace the hard drive cable.
5. Reinstall the software drivers for the hard drive.
6. Reinstall system software. Backup the data first.
7. Reinitiation the hard drive.
8. Replace the hard drive.
9. Replace the logic board.

System hangs during normal startup process

1. Boot from the system CD that came with the computer and see if the hard drive mounts on the desktop.
2. Using Drive Setup, reinstall the system software drivers for the hard drive.
3. Using Drive Setup, reinitiation the hard drive.
4. Check all cable connections to and from the hard drive.
5. Replace the hard drive cable.
6. Replace the hard drive.
7. Replace the logic board.

Optical Drive

Optical drive won't mount to the desktop

1. Try cleaning the disc. If it is dirty or scratched, it may not mount.
2. Try a different disc.
3. Boot from Apple Hardware Test (hold down the "C" key at startup) or boot from the system install CD (use Startup Manager, hold down the Option key at startup).
4. Perform a clean install with the CD that came with the computer.
5. Replace the optical drive cable.
6. Replace the optical drive.
7. Replace the logic board.

Can't boot from the optical drive

1. Try cleaning the disc. If it is dirty or scratched, it may not mount.
2. Try a different disc.
3. Boot from Apple Hardware Test (hold down the "C" key at startup) or boot from the system install CD (use Startup Manager, hold down the Option key at startup).
4. Perform a clean install with the CD that came with the computer.
5. Replace the optical drive cable.
6. Replace the optical drive.
7. Replace the logic board.

Optical disc constantly ejects

1. Disconnect all peripheral devices, especially the mouse in cases where the disc is constantly ejecting.
2. Try cleaning the disc. If it is dirty or scratched, it may not mount.
3. Try a different disc.
4. Boot from Apple Hardware Test (hold down the "C" key at startup) or boot from the system install CD (use Startup Manager, hold down the Option key at startup).
5. Perform a clean install with the CD that came with the computer.
6. Replace the optical drive cable.
7. Replace the optical drive.
8. Replace the logic board.

Sound Out

No sound from either internal or external speakers

1. Verify volume setting is correct in system preferences.
2. Replace the external speakers or headphone in question with a known-good device.
3. Reset parameter RAM. Press Command-Option-P-R during startup before “Welcome to Macintosh” appears.
4. Verify internal speaker cable is connected.
5. Replace the internal speaker.
6. Replace the logic board.

Sound In

No sound is recorded

1. Check setup of the system preferences for the microphone.
2. Check the microphone cable connection.
3. Replace the internal microphone.
4. Replace the neck assembly.

Error Beep(s)

Computer beeps at startup.

1. RAM expansion DIMMs for the iMac must be PC133 compliant and use SDRAM devices. If the user installs a DIMM that uses EDO or SGRAM devices, the computer will beep several times when the user attempts to restart the computer.
2. Refer to “Power-On Self Test” mentioned earlier in this chapter.

Modem

No modem dial tone

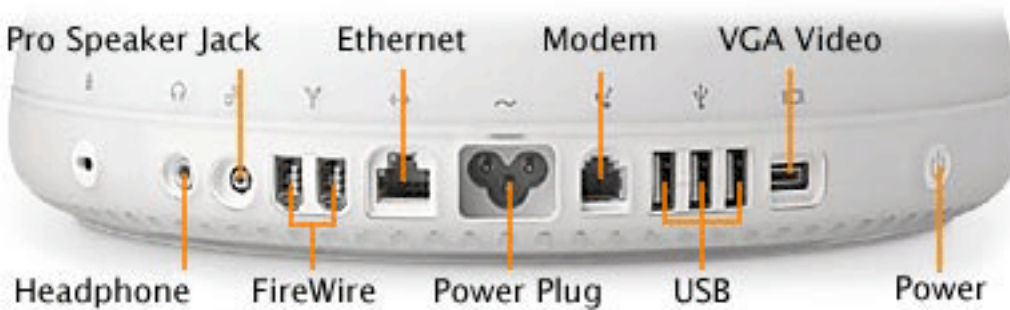
1. Verify known-good analog (not digital) telephone line.
2. Verify known-good RJ-11 telephone cable.
3. Verify RJ-11 cable is not plugged into Ethernet port.
4. Inspect RJ-11 connector and modem port for pin damage.
5. Verify RJ-11 cable is firmly installed in the modem port.
6. Verify correct modem driver is installed and the correct CCL is selected. If the problem persists, reinstall system software.
7. Open the bottom housing. Verify the internal RJ-11 modem cable is connected to the modem.
8. Replace the RJ-11 board.
9. Replace the modem.
10. Replace the logic board.

I/O Ports

Difficulty Plugging in an Ethernet Cable

Note: The Ethernet port on an iMac (Flat Panel) has a special mechanism to prevent modem cables from accidentally being inserted. In some cases, this mechanism can cause difficulty when attempting to plug in an Ethernet cable.

1. Verify that you are plugging into the Ethernet port. See graphic below.



2. Notice that the port has two metal tabs (circled below) which prohibit the use of a modem cable.



3. When inserting the Ethernet cable, try holding the cable at a slight angle and wiggle the connector to get past the metal tabs.
4. Once the connector has passed the metal tabs it should slide in with no further difficulty.

USB Printing Problems

iMac cannot print to attached known-good printer.

1. Verify that the printer is Macintosh compatible.
2. Verify that you have setup the printer correctly in OS X.
3. Reinstall the printer driver.
4. Switch the printer to another USB port.
5. Replace the printer interface cable.
6. System software is corrupted. Reinstall the system software.
7. Replace the logic board.



Upgrades

iMac (17-inch Flat Panel)



Memory, SO-DIMM

Tools

- Phillips #0 screwdriver.

Part Location



The iMac has two RAM expansion slots. The factory-installed RAM slot accepts a standard PC133 168-pin DIMM (up to 512 MB in capacity) and is accessible only by an Apple Authorized Service Provider. The user-accessible slot (shown above) accepts a standard PC133 144-pin SO-DIMM and is normally used for added RAM. Only the SO-DIMM slot is accessible by the user. A SO-DIMM for the iMac computer can contain either 64, 128, 256, or 512 MB of memory.

Note: This procedure describes installing a SO-DIMM memory module in the user-accessible slot.

Procedure

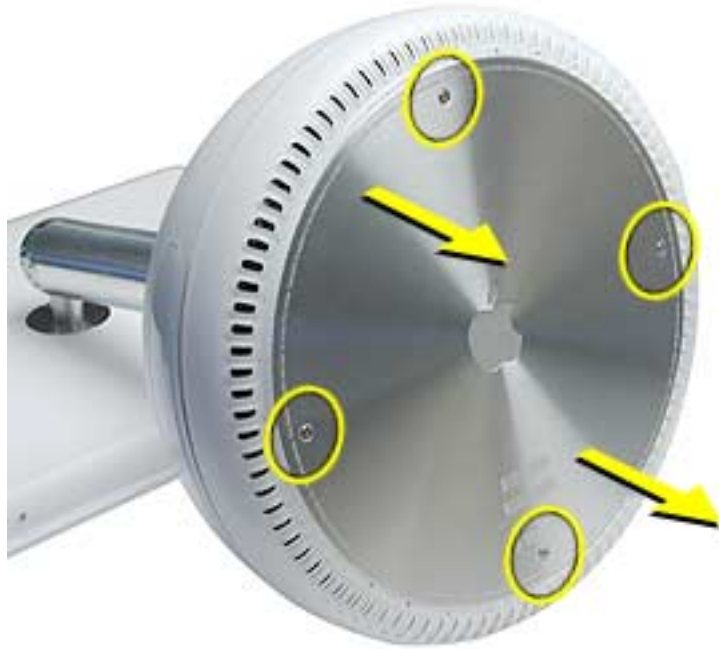
Opening the Computer

Warning: The computer must be turned off before RAM modules are removed or inserted. To remind you, a red LED is visible in the access door. If the red LED is on, power is on, and must be turned off before changing RAM modules.

1. Shut down the computer.
2. Unplug all cables from the computer except the power cord.
3. Lay the computer down on a soft cloth.



-
4. Loosen the four captive screws at the base of the computer and gently remove the access panel.



Important: To avoid electrostatic discharge, always ground yourself by touching metal before you touch any parts or install any components inside the computer. To avoid static electricity building back up in your body, do not walk around the room until you have completed the installation and closed the computer.

5. Touch a metal surface inside the computer.

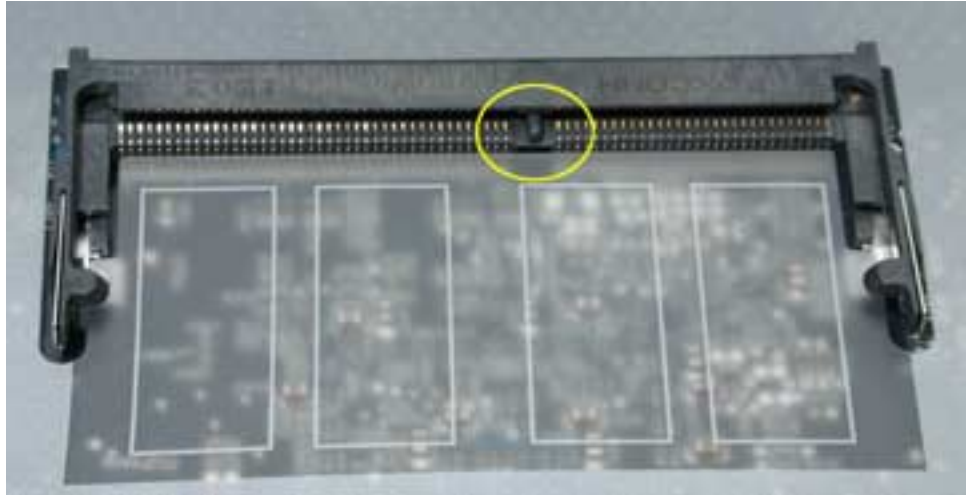


6. Unplug the power cord.

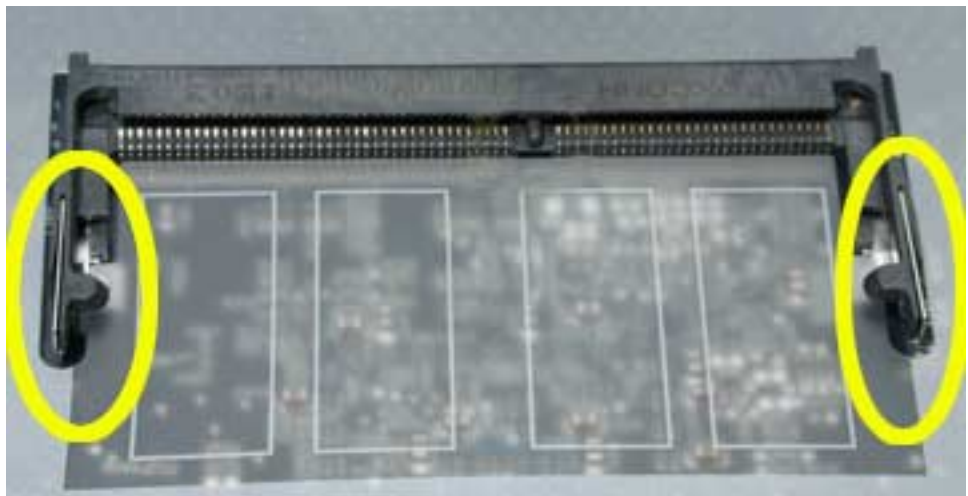
Installing the Memory Module

Note: If you are replacing a defective memory module, rather than adding a module, remove the defective module before proceeding.

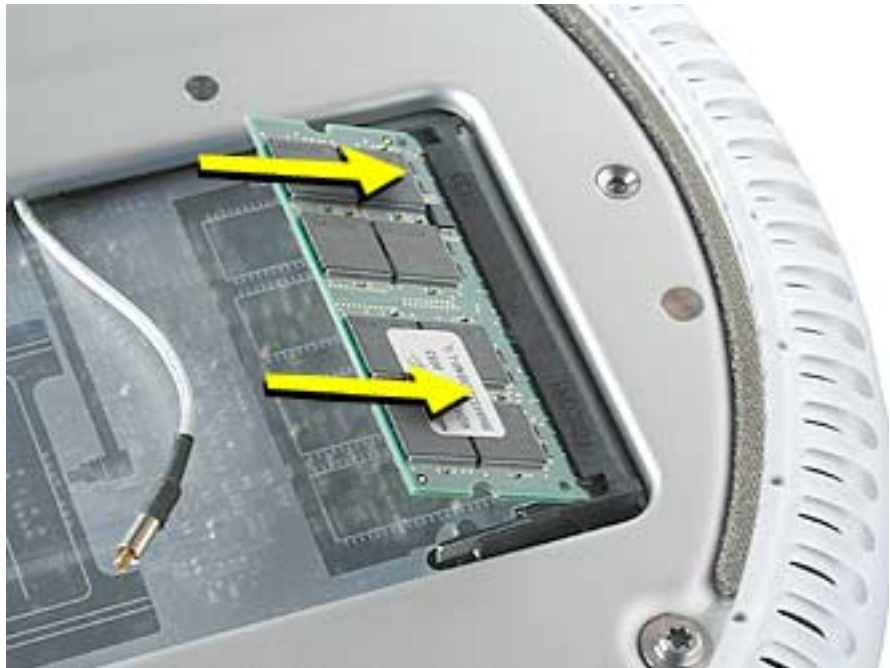
1. Line up the notch on the memory module with the notch (circled below) on the memory slot.



2. **Important:** Do not push the clips (circled below) when inserting memory. They are used to remove memory from the slot, not when inserting memory. These clips are fragile and can break.



3. Gently insert the memory module into the slot. You will hear a click when the memory is completely inserted into the slot. **Note:** Make certain to push the memory module in the direction of the arrows.

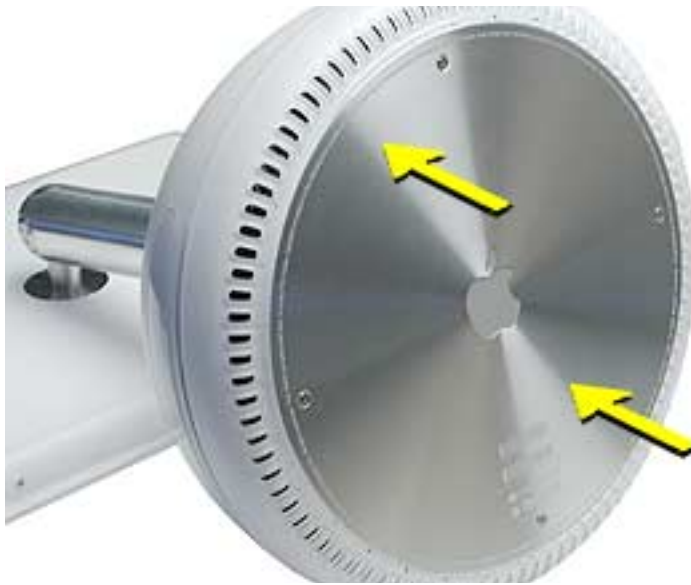


4. Press down gently on the memory until you hear it click into place under the two locking tabs (circled below) on the sides of the slot.



Closing the Computer

1. Replace the access panel and the four screws.



2. Reconnect all cables and restart the computer.

Warning: Never turn on the computer unless all of its internal and external parts are in place and it is closed. Operating the computer when it is open or missing parts can damage your computer or cause injury.



AirPort Card

Tools

- Phillips #0 screwdriver to remove the user access panel.

Part Location



Note: Written and video instructions covering customer-insatiable parts are available at <http://www.info.apple.com/installparts/>.

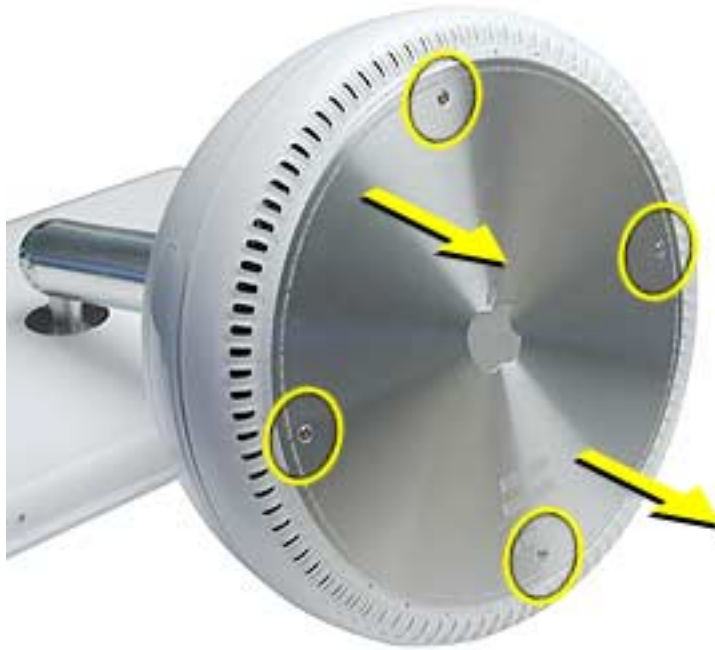
Opening the Computer

Warning: Always shut down your computer before opening it to avoid damaging its internal components or causing injury. Shut down the computer and wait five minutes before continuing.

1. Unplug all cables from the computer except the power cord.
2. Lay the computer down on a soft cloth.



3. Loosen the four captive screws at the base of the computer and gently remove the access panel.



Important: To avoid electrostatic discharge, always ground yourself by touching metal before you touch any parts or install any components inside the computer. To avoid static electricity building back up in your body, do not walk around the room until you have completed the installation and closed the computer.

4. Touch a metal surface inside the computer.



5. Unplug the power cord.

Installing the AirPort Card

Note: If you are replacing a defective AirPort Card, rather than adding a card, remove the defective card before proceeding.

1. Connect the AirPort antenna firmly to the AirPort Card.

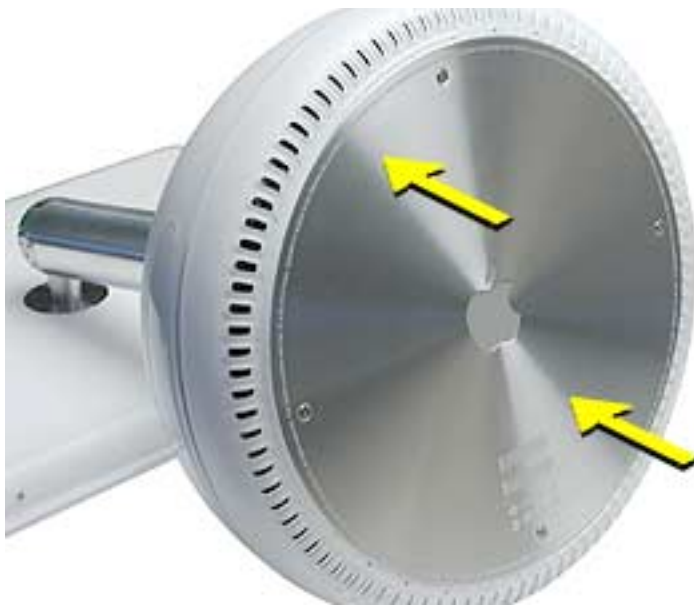


2. Insert the card into the AirPort Card slot.



Closing the Computer

1. Replace the access panel and tighten the four captive screws.

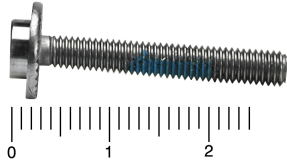


2. Reconnect all cables and restart the computer.

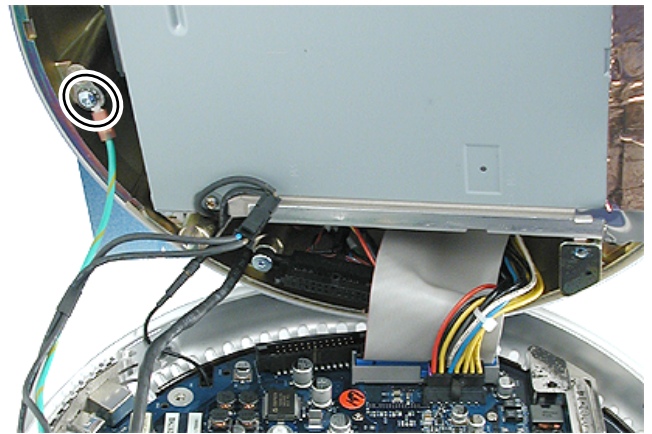
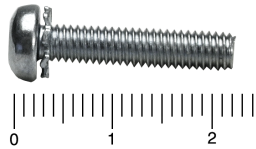
Warning: Never turn on the computer unless all of its internal and external parts are in place and it is closed. Operating the computer when it is open or missing parts can damage your computer or cause injury.

iMac (17-inch Flat Panel) Screw Locator - 1 of 7

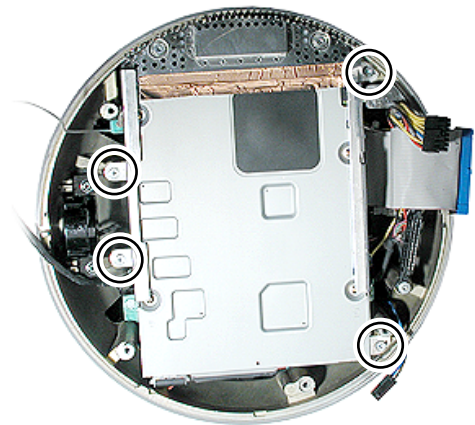
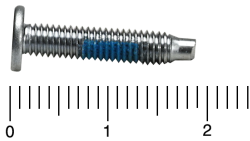
Bottom Housing Bolts (4)
T-15, 922-5104



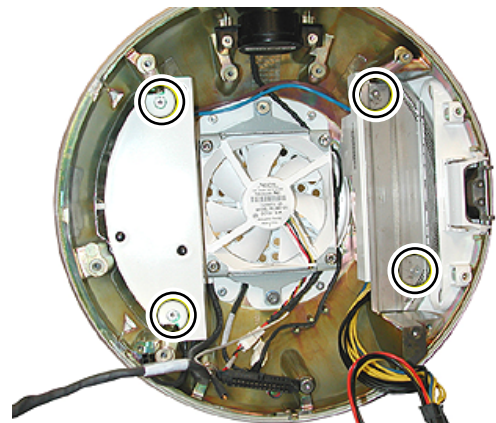
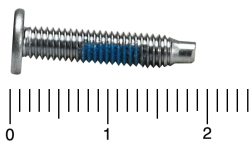
Grounding Screw to Faraday (1)
T-15, 922-4714



Drive Carrier to Faraday (4)
T-10, 922-4709

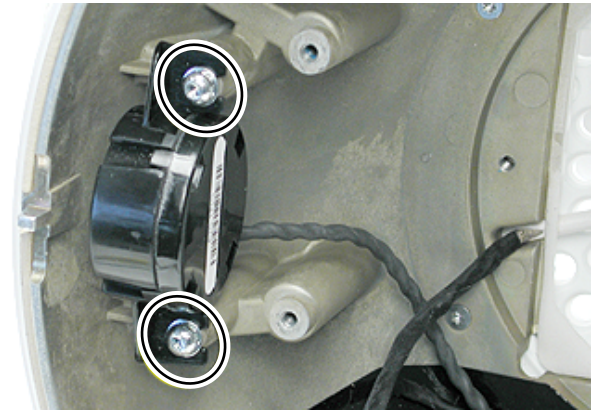
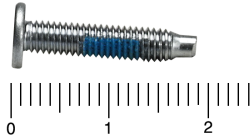


Power Supply (4)
T-10, 922-4709

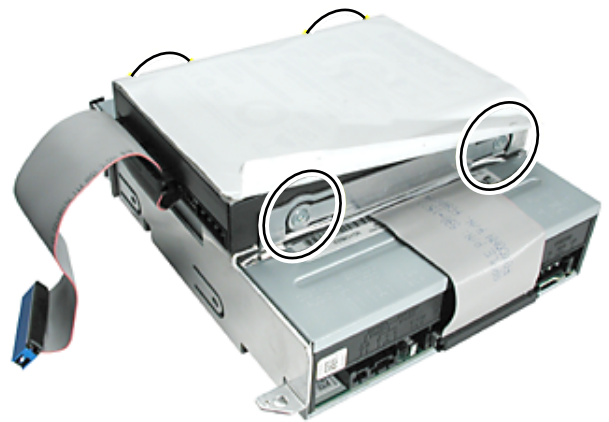
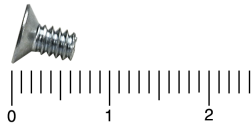


iMac (17-inch Flat Panel) Screw Locator - 2 of 7

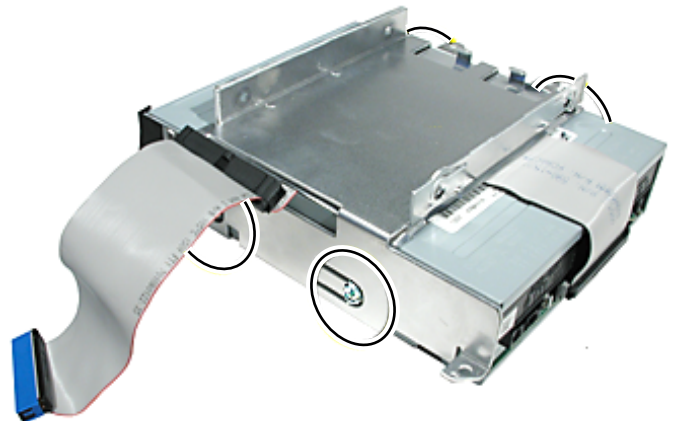
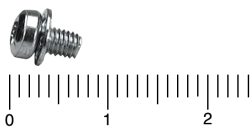
Speaker (2)
T-10, 922-4709



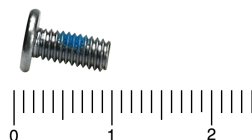
Hard Drive to Carrier to Assy (4)
T-10, 922-5105



Optical Drive to Carrier Assy (4)
T-10, 922-5107

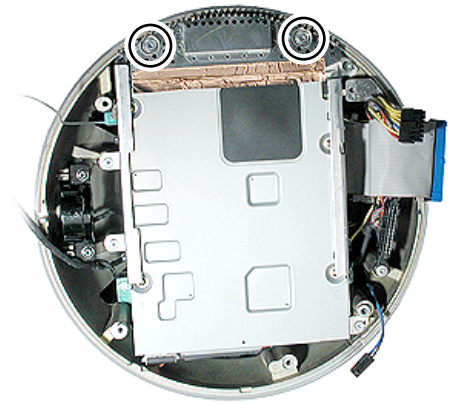
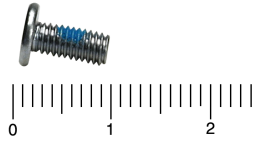


Power Supply Shield (2)
T-10, 922-4707

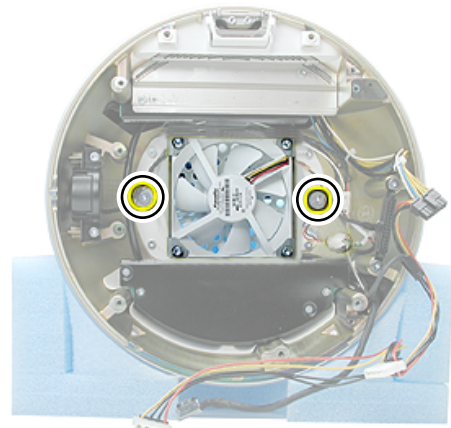
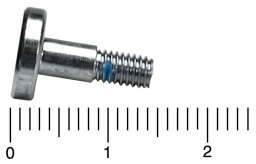


iMac (17-inch Flat Panel) Screw Locator - 3 of 7

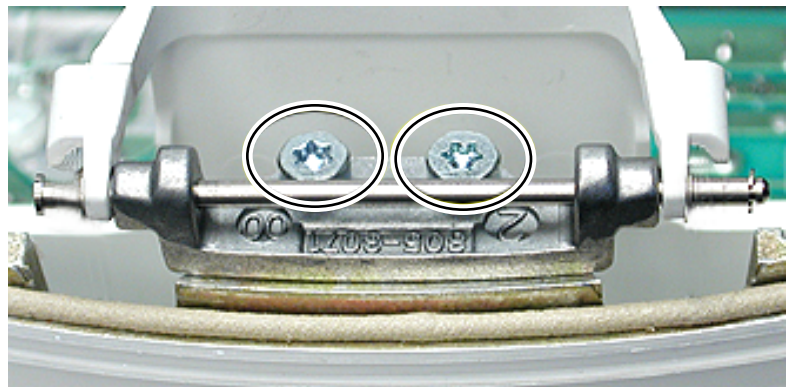
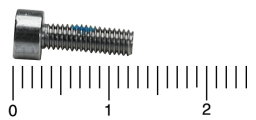
Metal DVD Shield (2)
T-10, 922-4707



Fan (2)
T-15, 922-4710

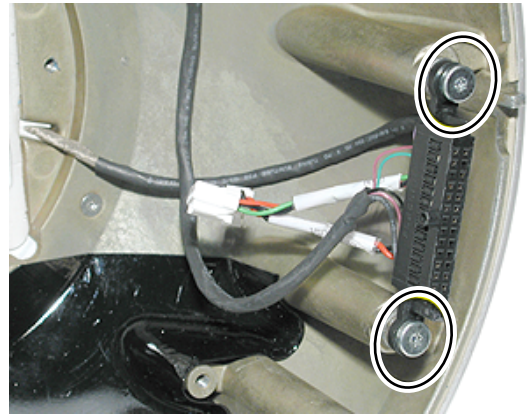
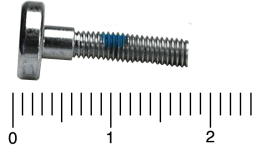


Door Hinge (2)
T-10, 922-5108

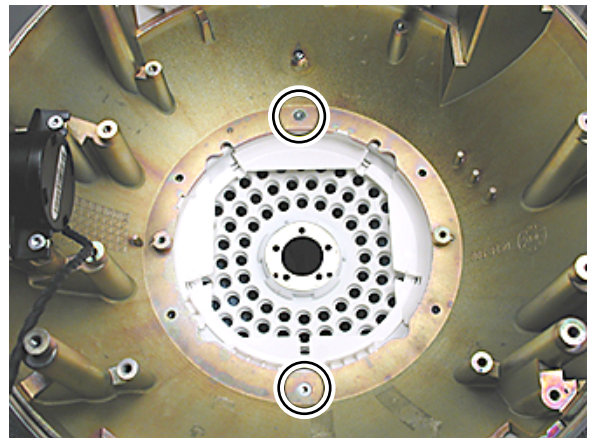
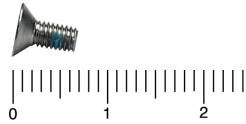


iMac (17-inch Flat Panel) Screw Locator - 4 of 7

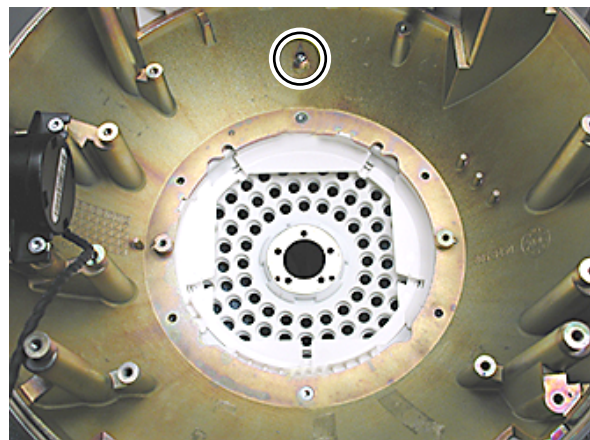
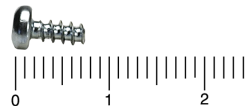
Blind Mate Connector (2)
T-10, 922-5109



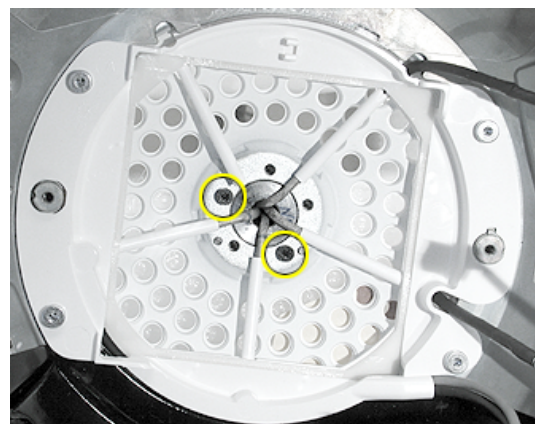
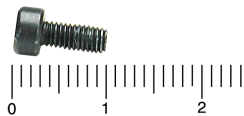
Faraday to Outer Shell (2)
T-10, 922-5106



Faraday Under Logo (1)
T-8, 922-4706

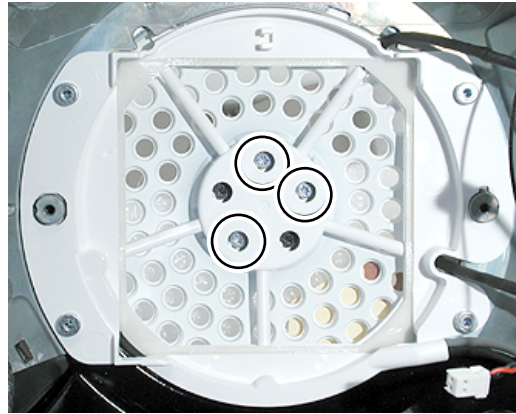
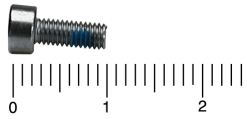


White Plastic Cap
2 Black
T-10, 922-5110

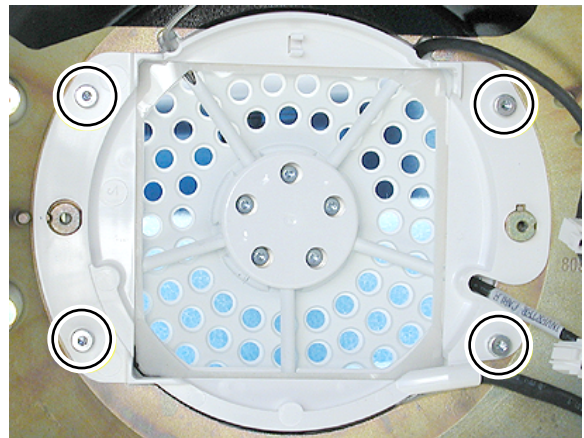
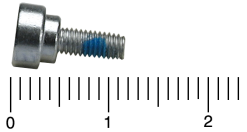


iMac (17-inch Flat Panel) Screw Locator - 5 of 7

White Plastic Cap
3 Silver
T-10, 922-5111



White, Plastic Neck
Cable Retainer (4)
T-10, 922-5112



LCD Bezel (3)
1.5mm hex, 922-5336

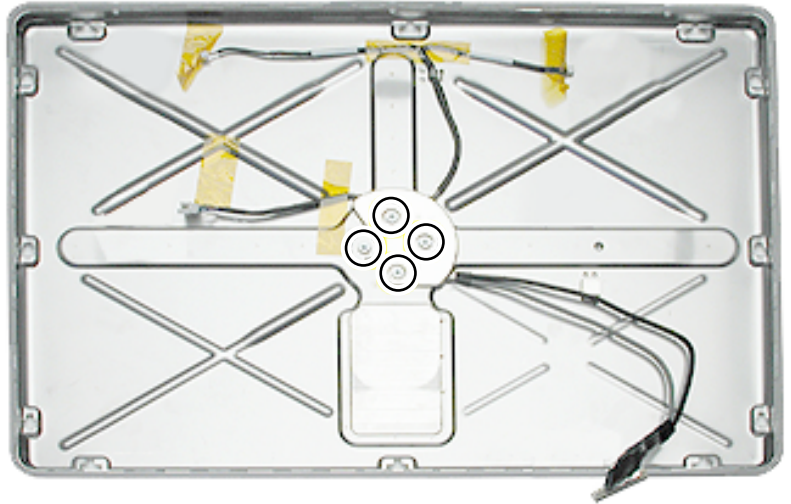


Antenna to Faraday (2)
T-10

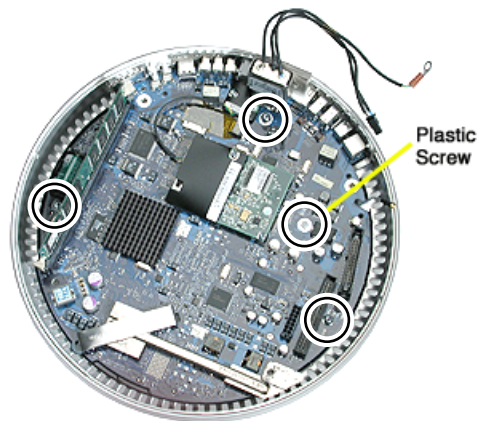
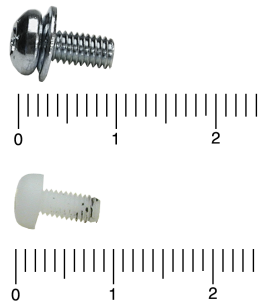


iMac (17-inch Flat Panel) Screw Locator - 6 of 7

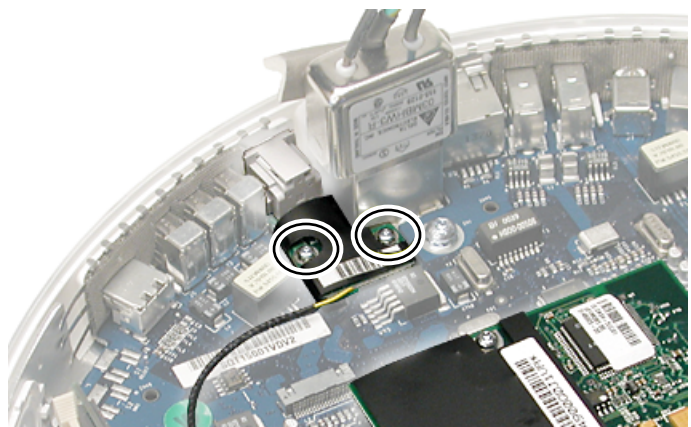
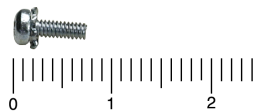
Display Support to Neck Extension (4)
T-10, 922-5332



Logic Board,
Metal (3)
Nylon (1)
T-15



RJ-11 Board (2)
T-6 922-5115

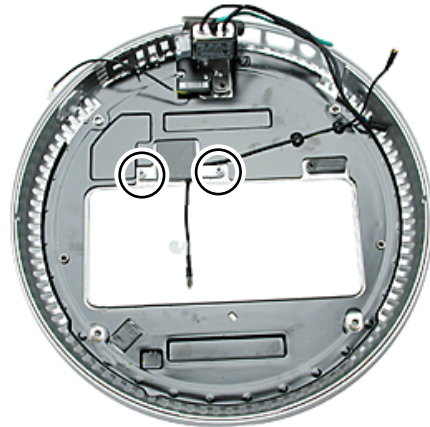


iMac (17-inch Flat Panel) Screw Locator - 7 of 7

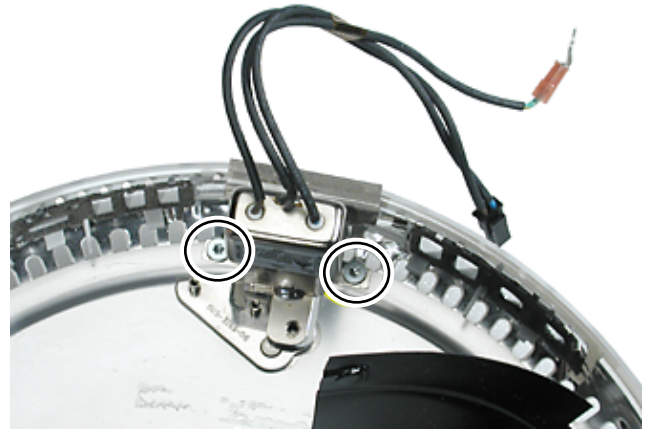
Modem (2)
T-8 922-5116



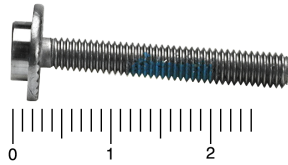
Antenna Extension (2)
T-10



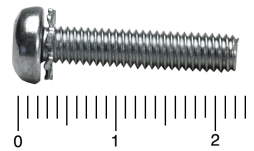
AC Line Filter (2)
T-10 922-5330



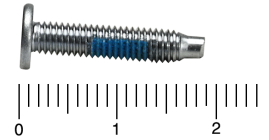
iMac (17-inch Flat Panel) Screw Matrix In Centimeters



Bottom Housing Bolts
(4)
T-15 922-5104



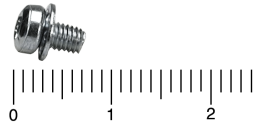
Grounding Screw to Faraday
(1)
T-15 922-4714



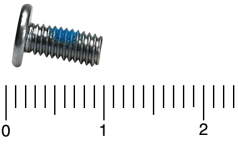
Speaker (2)
Power Supply (4)
Drive Carrier to Faraday (4)
T-10 922-4709



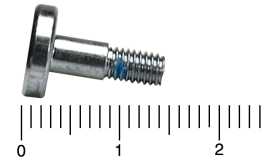
Hard Drive to Carrier to Assy
(4)
T-10 922-5105



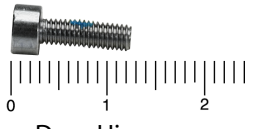
Optical Drive to Carrier Assy
(4)
T-10 922-5107



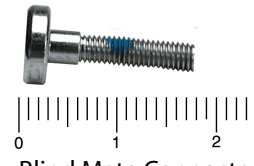
Power Supply Shield (2)
Metal DVD Shield (2)
T-10 922-4707



Fan
(2)
T-15 922-4710



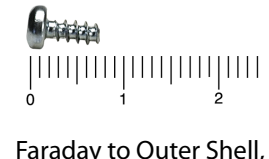
Door Hinge
(2)
T-10 922-5108



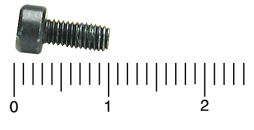
Blind Mate Connector
(2)
T-10 922-5109



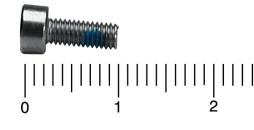
Faraday to Outer Shell
(2)
T-10 922-5106



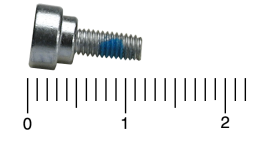
Faraday to Outer Shell,
Under the Logo (1)
T-8 922-4706



Extension to Vent Cap
2 Black
T-10 922-5110



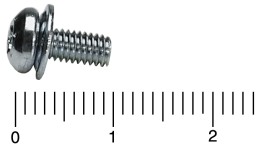
Extension to Vent Cap
3 Silver
T-10 922-5111



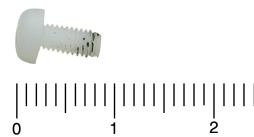
Fan Bracket Retainer (white)
(4)
T-10 922-5112



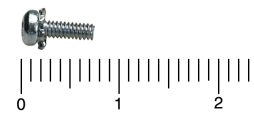
Display Support to Neck
(4)
T-10 922-5332



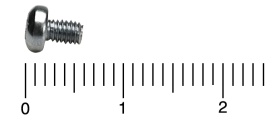
Logic Board, Metal (3)
T-15 922-4715



Logic Board, Nylon (1)
Phillips 0 922-5113



RJ-11 Board (2)
T-6 922-5115



Modem (2)
T-8 922-5116



AC Line Filter
(2)
T-10 922-5330



Antenna (2)
T-10



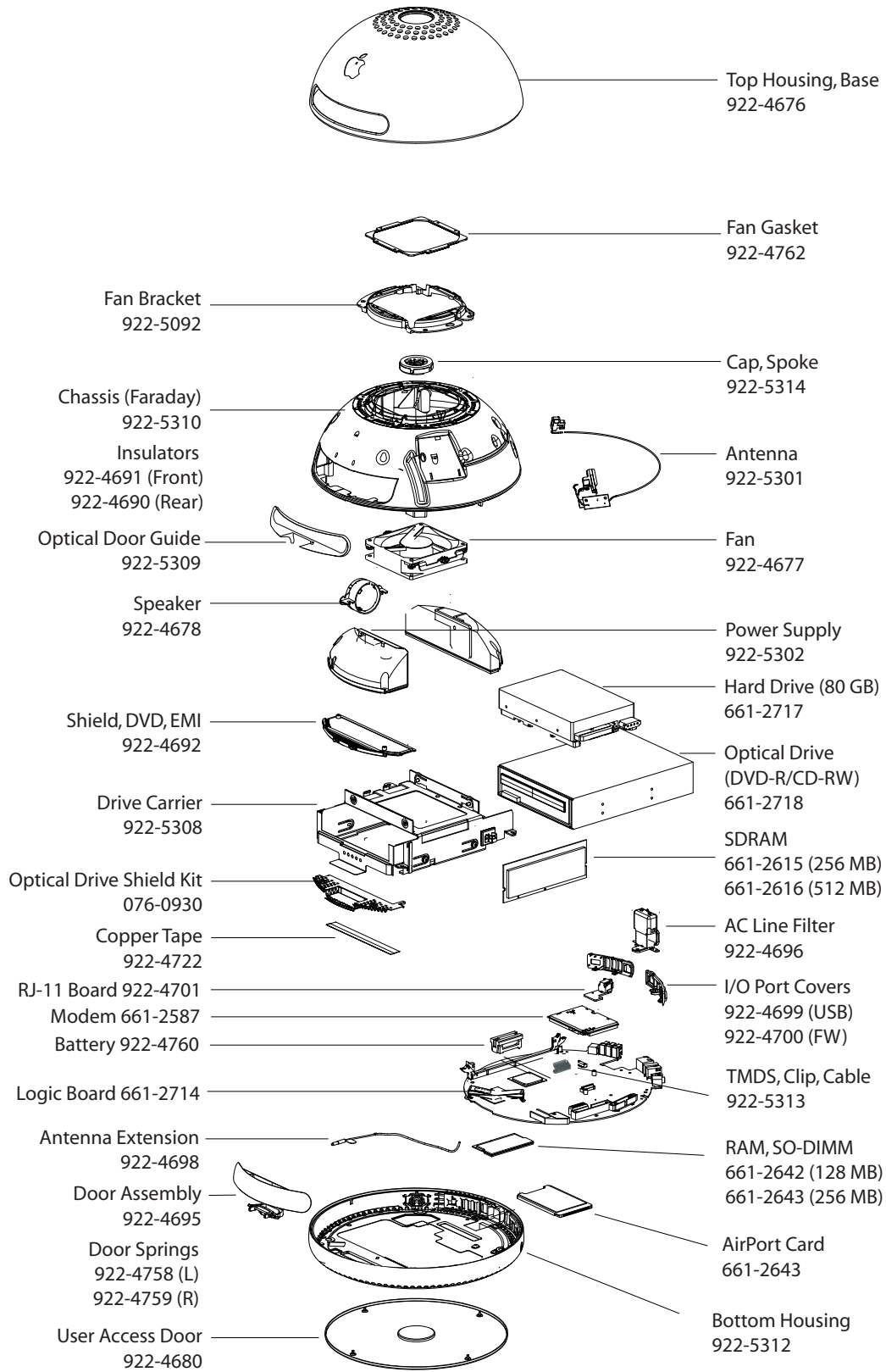
Display to Frame (4)
T-10 922-5331

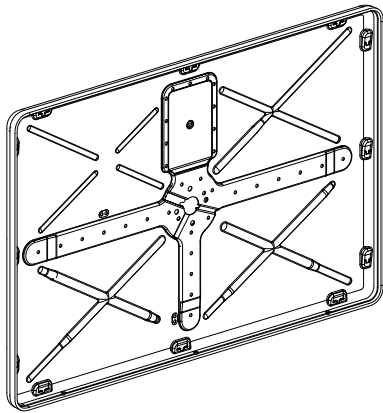


Display to Bezel (3)
1.5 mm hex 922-5336



Fan Bracket to Fan (2)
T-25 922-4708



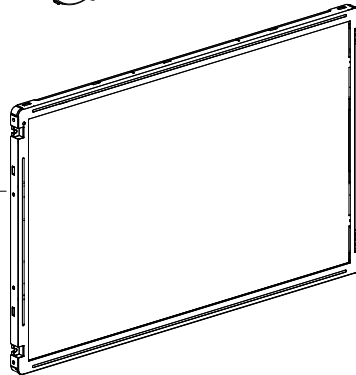


Housing, Rear Display
(Back Cover and Shield)
922-5299



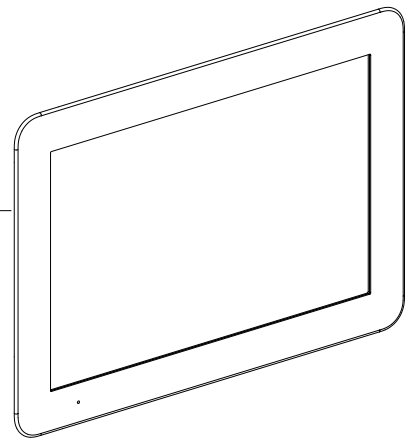
Deflector, Wire, Display
922-5300

17" LCD Display
661-2715



Inverter Assembly
922-5298

Bezel, Display
922-5297



Neck Extension
(for 17" Display)
661-2716

